

Technical Data Sheet

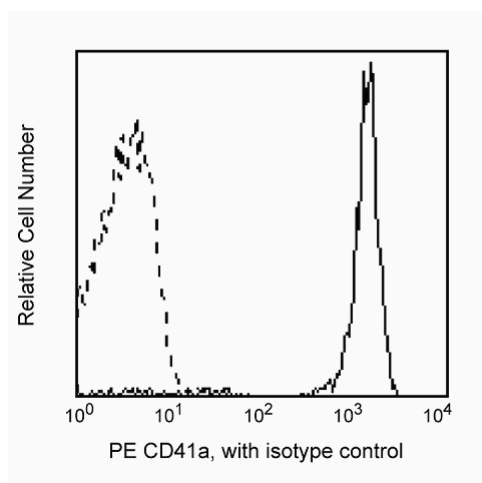
PE Mouse Anti-Human CD41a

Product Information

Material Number:	557297
Size:	50 tests
Vol. per Test:	20 µl
Clone:	HIP8
Isotype:	Mouse IgG1, κ
Reactivity:	Human QC Testing: Baboon or Rhesus or Cynomolgus
Workshop:	IV P38
Storage Buffer:	Aqueous buffered solution containing BSA and ≤0.09% sodium azide.

Description

Clone HIP8 reacts with a calcium-dependent complex of CD41/CD61 (GPIIb/IIIa) expressed on platelets and megakaryocytes. CD41/CD61 complex is the receptor of fibrinogen, fibronectin and von Willebrand factor, and mediates platelet adhesion and aggregation. Clone HIP8 also cross-reacts with a major subset of peripheral blood platelets of baboon, and both rhesus and cynomolgus macaque monkeys. The staining pattern of platelets is similar to that observed with peripheral blood platelets from normal human donors.



Profile of anti-CD41a reactivity on resting platelets of Rhesus macaque (*Maccaca mulatta*) analyzed by flow cytometry

Preparation and Storage

The monoclonal antibody was purified from tissue culture supernatant or ascites by affinity chromatography.

The antibody was conjugated with R-PE under optimum conditions, and unconjugated antibody and free PE were removed.

Store undiluted at 4° C and protected from prolonged exposure to light. Do not freeze.

Application Notes

Application

Flow cytometry	Routinely Tested
----------------	------------------

Suggested Companion Products

Catalog Number	Name	Size	Clone
556650	PE Mouse IgG1, κ Isotype Control	50 tests	MOPC-21

BD Biosciences

www.bdbiosciences.com

United States 877.232.8995 Canada 888.259.0187 Europe 32.53.720.550 Japan 0120.8555.90 Asia Pacific 65.6861.0633 Latin America/Caribbean 55.11.5185.9995

For country-specific contact information, visit www.bdbiosciences.com/how_to_order/

Conditions: The information disclosed herein is not to be construed as a recommendation to use the above product in violation of any patents. BD Biosciences will not be held responsible for patent infringement or other violations that may occur with the use of our products. Purchase does not include or carry any right to resell or transfer this product either as a stand-alone product or as a component of another product. Any use of this product other than the permitted use without the express written authorization of Becton Dickinson and Company is strictly prohibited.

For Research Use Only. Not for use in diagnostic or therapeutic procedures. Not for resale.

BD, BD Logo and all other trademarks are the property of Becton, Dickinson and Company. ©2007 BD



Product Notices

1. This reagent has been pre-diluted for use at the recommended Volume per Test. We typically use 1×10^6 cells in a 100- μ l experimental sample (a test).
2. Since applications vary, each investigator should titrate the reagent to obtain optimal results.
3. Please refer to www.bdbiosciences.com/pharmingen/protocols for technical protocols.
4. For fluorochrome spectra and suitable instrument settings, please refer to our Fluorochrome Web Page at www.bdbiosciences.com/pharmingen/colors.
5. Caution: Sodium azide yields highly toxic hydrazoic acid under acidic conditions. Dilute azide compounds in running water before discarding to avoid accumulation of potentially explosive deposits in plumbing.
6. Source of all serum proteins is from USDA inspected abattoirs located in the United States.

References

Schlossman SF, Boumsell L, Gilks W, et al, ed. *Leukocyte Typing V: White Cell Differentiation Antigens*. New York: Oxford University Press; 1995.(Biology)
Knapp W, Dorken B, Rieber EP, et al, ed. *Leukocyte Typing IV*. New York: Oxford University Press; 1989.(Clone-specific)