

## Technical Data Sheet

## FITC Mouse Anti-Human HLA-DR

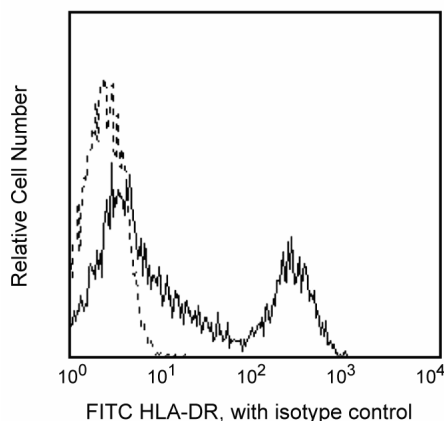
## Product Information

<b>Material Number:</b>	556643
<b>Size:</b>	50 tests
<b>Vol. per Test:</b>	20 µl
<b>Clone:</b>	G46-6
<b>Isotype:</b>	Mouse IgG2a κ
<b>Reactivity:</b>	Human QC Testing: Baboon or Rhesus or Cynomolgus Tested in Development: Dog
<b>Workshop:</b>	NA
<b>Storage Buffer:</b>	Aqueous buffered solution containing BSA and ≤0.09% sodium azide.

## Description

Clone G46-6 cross-reacts with the human class II antigen of the major histocompatibility complex (MHC). This clone also cross-reacts with a subset of peripheral blood lymphocytes and monocytes, but not granulocytes, of baboon and both rhesus and cynomolgus macaque monkeys. The distribution on lymphocytes is similar to that observed with human peripheral blood lymphocytes, with the majority of CD20-positive cells and a small subset of CD3-positive cells being positive with G46-6.

This antibody is routinely tested by flow cytometric analysis. Other applications were tested at BD Biosciences Pharmingen during antibody development only or reported in the literature.



*Profile of anti-HLA-DR reactivity on peripheral blood lymphocytes of rhesus macaque (Macaca mulatta) analyzed by flow cytometry*

## Preparation and Storage

The monoclonal antibody was purified from tissue culture supernatant or ascites by affinity chromatography. The antibody was conjugated with FITC under optimum conditions, and unreacted FITC was removed. Store undiluted at 4° C and protected from prolonged exposure to light. Do not freeze.

## Application Notes

## Application

Flow cytometry

Routinely Tested

## Suggested Companion Products

Catalog Number	Name	Size	Clone
556652	FITC Mouse IgG2a Kappa Isotype Control	50 tests	G155-178

## BD Biosciences

bdbiosciences.com

United States	Canada	Europe	Japan	Asia Pacific	Latin America/Caribbean
877.232.8995	888.259.0187	32.53.720.550	0120.8555.90	65.6861.0633	55.11.5185.9995

For country-specific contact information, visit [bdbiosciences.com/how\\_to\\_order/](http://bdbiosciences.com/how_to_order/)

Conditions: The information disclosed herein is not to be construed as a recommendation to use the above product in violation of any patents. BD Biosciences will not be held responsible for patent infringement or other violations that may occur with the use of our products. Purchase does not include or carry any right to resell or transfer this product either as a stand-alone product or as a component of another product. Any use of this product other than the permitted use without the express written authorization of Becton Dickinson and Company is strictly prohibited.

For Research Use Only. Not for use in diagnostic or therapeutic procedures. Not for resale.

BD, BD Logo and all other trademarks are the property of Becton, Dickinson and Company. ©2006 BD



BD

BD Biosciences

## Product Notices

1. This reagent has been pre-diluted for use at the recommended Volume per Test. We typically use  $1 \times 10^6$  cells in a 100- $\mu$ l experimental sample (a test).
2. Since applications vary, each investigator should titrate the reagent to obtain optimal results.
3. Please refer to [www.bdbiosciences.com/pharmingen/protocols](http://www.bdbiosciences.com/pharmingen/protocols) for technical protocols.
4. Caution: Sodium azide yields highly toxic hydrazoic acid under acidic conditions. Dilute azide compounds in running water before discarding to avoid accumulation of potentially explosive deposits in plumbing.
5. Source of all serum proteins is from USDA inspected abattoirs located in the United States.

## References

Barclay NA, Brown MH, Birkeland ML, et al, ed. *The Leukocyte Antigen FactsBook*. San Diego, CA: Academic Press; 1997.(Biology)