

## Technical Data Sheet

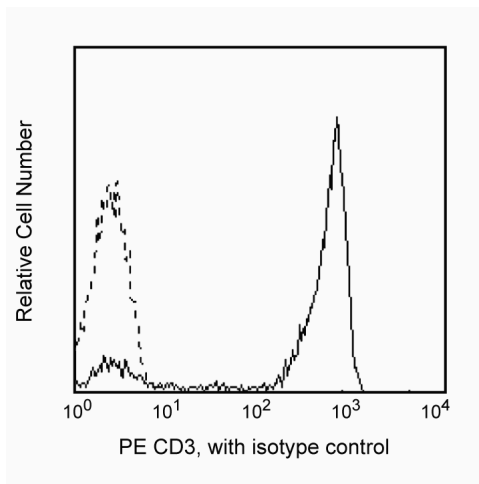
## PE Mouse Anti-Human CD3ε

## Product Information

<b>Material Number:</b>	<b>556612</b>
<b>Size:</b>	50 tests
<b>Vol. per Test:</b>	20 µl
<b>Clone:</b>	SP34
<b>Isotype:</b>	Mouse IgG3, λ
<b>Reactivity:</b>	Human
	QC Testing: Baboon or Cynomolgus or Rhesus
<b>Workshop:</b>	V 5T-CD03.05
<b>Storage Buffer:</b>	Aqueous buffered solution containing BSA and ≤0.09% sodium azide.

## Description

Clone SP34 reacts with human form of the 20 kDa epsilon subunit of the CD3 antigen/T-cell receptor (TCR) complex. This clone also cross-reacts with a major subset of peripheral blood lymphocytes, but not monocytes or granulocytes, of rhesus or cynomolgus and pigtail macaque monkeys. The distribution on lymphocytes is similar to that observed with normal human donor lymphocytes, with the majority of CD3-positive cells being negative when dual stained with antibodies to B or NK cell markers.



*Profile of anti-CD3 reactivity on peripheral blood lymphocytes of rhesus macaque (macaca mulatta) analyzed by flow cytometry*

## Preparation and Storage

The monoclonal antibody was purified from tissue culture supernatant or ascites by affinity chromatography. The antibody was conjugated with R-PE under optimum conditions, and unconjugated antibody and free PE were removed. Store undiluted at 4°C and protected from prolonged exposure to light. Do not freeze.

## Application Notes

## Application

Flow cytometry	Routinely Tested
----------------	------------------

## Suggested Companion Products

Catalog Number	Name	Size	Clone
556659	PE Mouse IgG3, κ Isotype Control	50 tests	J606

## Product Notices

1. This reagent has been pre-diluted for use at the recommended Volume per Test. We typically use  $1 \times 10^6$  cells in a 100-µl experimental sample (a test).
2. Since applications vary, each investigator should titrate the reagent to obtain optimal results.
3. Please refer to [www.bdbiosciences.com/pharmingen/protocols](http://www.bdbiosciences.com/pharmingen/protocols) for technical protocols.
4. For fluorochrome spectra and suitable instrument settings, please refer to our Fluorochrome Web Page at [www.bdbiosciences.com/colors](http://www.bdbiosciences.com/colors).

## BD Biosciences

[bdbiosciences.com](http://bdbiosciences.com)

United States	Canada	Europe	Japan	Asia Pacific	Latin America/Caribbean
877.232.8995	888.268.5430	32.53.720.550	0120.8555.90	65.6861.0633	0800.771.7157

For country-specific contact information, visit [bdbiosciences.com/how\\_to\\_order/](http://bdbiosciences.com/how_to_order/)

Conditions: The information disclosed herein is not to be construed as a recommendation to use the above product in violation of any patents. BD Biosciences will not be held responsible for patent infringement or other violations that may occur with the use of our products. Purchase does not include or carry any right to resell or transfer this product either as a stand-alone product or as a component of another product. Any use of this product other than the permitted use without the express written authorization of Becton Dickinson and Company is strictly prohibited.

For Research Use Only. Not for use in diagnostic or therapeutic procedures. Not for resale.

BD, BD Logo and all other trademarks are the property of Becton, Dickinson and Company. ©2011 BD



5. Caution: Sodium azide yields highly toxic hydrazoic acid under acidic conditions. Dilute azide compounds in running water before discarding to avoid accumulation of potentially explosive deposits in plumbing.
6. Source of all serum proteins is from USDA inspected abattoirs located in the United States.

## References

Sancho J, Ledbetter JA, Choi MS, Kanner SB, Deans JP, Terhorst C. CD3-zeta surface expression is required for CD4-p56lck-mediated upregulation of T cell antigen receptor-CD3 signaling in T cells. *J Biol Chem*. 1992; 267(11):7871-7879. (Biology)

Schlossman SF, Boumsell L, Gilks W, et al, ed. *Leukocyte Typing V: White Cell Differentiation Antigens*. New York: Oxford University Press; 1995. (Clone-specific)