

Technical Data Sheet

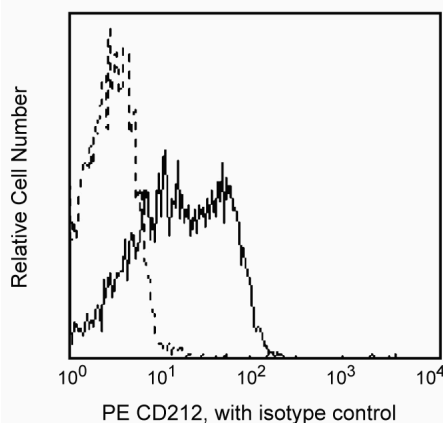
PE Mouse Anti-Human CD212

Product Information

Material Number:	556065
Alternate Name:	IL-12R beta 1, IL-12 receptor β 1 subunit
Size:	100 tests
Vol. per Test:	20 μ l
Clone:	2.4E6
Isotype:	Mouse IgG1, κ
Reactivity:	QC Testing: Human
Workshop:	VII 70503
Storage Buffer:	Aqueous buffered solution containing BSA and $\leq 0.09\%$ sodium azide.

Description

Reacts with IL-12R β 1 subunit, one of two subunits of the IL-12R β . IL-12R, expressed mainly on T cells or NK cells, is a member of the hemopoietin receptor superfamily and is related to gp130, granulocyte-colony stimulating factor (G-CSF) receptor and leukemia inhibitory factor (LIF). Reports indicate that together, subunits IL-12R β 1 and IL-12R β 2 bind IL-12 with high affinity. IL-12 is an immunomodulatory cytokine produced mainly by antigen-presenting cells (APC) and plays a role in promoting Th1-type responses and cell-mediated immunity. It stimulates proliferation of T cells and NK cells, enhances lytic activity of lymphokine-activated killer (LAK) cells and CTL.



Profile of IL-12R β 1 expressed on peripheral blood lymphocytes analyzed on a FACScan (BDIS, San Jose, CA).

Preparation and Storage

The monoclonal antibody was purified from tissue culture supernatant or ascites by affinity chromatography. The antibody was conjugated with R-PE under optimum conditions, and unconjugated antibody and free PE were removed. Store undiluted at 4°C and protected from prolonged exposure to light. Do not freeze.

Application Notes

Application

Flow cytometry	Routinely Tested
----------------	------------------

Suggested Companion Products

Catalog Number	Name	Size	Clone
555749	PE Mouse IgG1, κ Isotype Control	100 tests	MOPC-21

Product Notices

1. This reagent has been pre-diluted for use at the recommended Volume per Test. We typically use 1×10^6 cells in a 100- μ l experimental sample (a test).
2. Since applications vary, each investigator should titrate the reagent to obtain optimal results.
3. Please refer to www.bdbiosciences.com/pharmingen/protocols for technical protocols.
4. For fluorochrome spectra and suitable instrument settings, please refer to our Fluorochrome Web Page at www.bdbiosciences.com/colors.

BD Biosciences

bdbiosciences.com

United States	Canada	Europe	Japan	Asia Pacific	Latin America/Caribbean
877.232.8995	888.268.5430	32.53.720.550	0120.8555.90	65.6861.0633	0800.771.7157

For country-specific contact information, visit bdbiosciences.com/how_to_order/

Conditions: The information disclosed herein is not to be construed as a recommendation to use the above product in violation of any patents. BD Biosciences will not be held responsible for patent infringement or other violations that may occur with the use of our products. Purchase does not include or carry any right to resell or transfer this product either as a stand-alone product or as a component of another product. Any use of this product other than the permitted use without the express written authorization of Becton Dickinson and Company is strictly prohibited.

For Research Use Only. Not for use in diagnostic or therapeutic procedures. Not for resale.

BD, BD Logo and all other trademarks are the property of Becton, Dickinson and Company. ©2011 BD



5. Caution: Sodium azide yields highly toxic hydrazoic acid under acidic conditions. Dilute azide compounds in running water before discarding to avoid accumulation of potentially explosive deposits in plumbing.
6. Source of all serum proteins is from USDA inspected abattoirs located in the United States.

References

Chua AO, Chizzonite R, Desai BB, et al. Expression cloning of a human IL-12 receptor component. A new member of the cytokine receptor superfamily with strong homology to gp130. *J Immunol.* 1994; 153(1):128-136. (Biology)

Mason D, Andre P, Bensussan A, ed. *Leukocyte Typing VII*. New York: Oxford University Press; 2002. (Clone-specific)

Presky DH, Minetti L.J, Gillessen S, et al. Analysis of the multiple interactions between IL-12 and the high affinity IL-12 receptor complex. *J Immunol.* 1998; 160(5):2174-2179. (Biology)

Wu CY, Warrior RR, Carvajal DM, et al. Biological function and distribution of human interleukin-12 receptor beta chain. *Eur J Immunol.* 1996; 26(2):345-350. (Biology)