

Technical Data Sheet

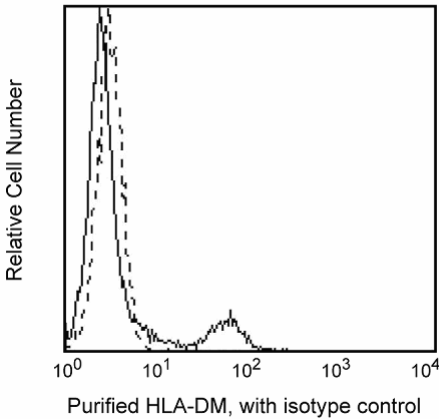
Purified Mouse Anti-Human HLA-DM

Product Information

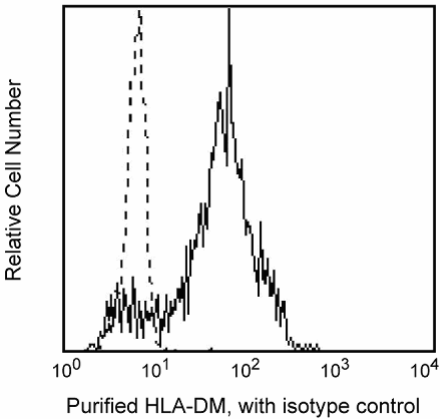
Material Number:	555982
Size:	0.1 mg
Concentration:	0.5 mg/ml
Clone:	MaP.DM1
Isotype:	Mouse IgG1, κ
Reactivity:	QC Testing: Human
Storage Buffer:	Aqueous buffered solution containing ≤0.09% sodium azide.

Description

Reacts with human leukocyte antigen-DM (HLA-DM), a non-classical MHC class II molecule expressed in the cytoplasm of antigen presenting cells (APC). HLA-DM is composed of alpha and beta subunits which form a similar structure as the classical class II molecules. HLA-DM catalyzes the dissociation of CLIP from MHC class II-CLIP complexes in vitro and facilitates the binding of antigenic peptides. It also prevents self-antigens from becoming stably complexed with class II molecules and being presented to T cells.



Profile of intracellular staining of peripheral blood lymphocytes analyzed on a FACScan (BDIS, San Jose, CA).



Profile of intracellular staining of peripheral blood monocytes analyzed on a FACScan (BDIS, San Jose, CA).

Preparation and Storage

The monoclonal antibody was purified from tissue culture supernatant or ascites by affinity chromatography. Store undiluted at 4° C.

Application Notes

Application

Intracellular staining (flow cytometry)	Routinely Tested
---	------------------

Suggested Companion Products

Catalog Number	Name	Size	Clone
554714	BD Cytofix/Cytoperm Fixation/Permeabilization Kit	250 tests	(none)
555746	Purified Mouse IgG1, κ Isotype Control	0.1 mg	MOPC-21
555988	FITC Goat Anti-Mouse IgG/IgM	0.5 mg	Polyclonal

BD Biosciences

www.bdbiosciences.com

United States	Canada	Europe	Japan	Asia Pacific	Latin America/Caribbean
877.232.8995	888.259.0187	32.53.720.550	0120.8555.90	65.6861.0633	55.11.5185.9995

For country-specific contact information, visit [www.bdbiosciences.com/how\\_to\\_order/](http://www.bdbiosciences.com/how_to_order/)

Conditions: The information disclosed herein is not to be construed as a recommendation to use the above product in violation of any patents. BD Biosciences will not be held responsible for patent infringement or other violations that may occur with the use of our products. Purchase does not include or carry any right to resell or transfer this product either as a stand-alone product or as a component of another product. Any use of this product other than the permitted use without the express written authorization of Becton Dickinson and Company is strictly prohibited.

For Research Use Only. Not for use in diagnostic or therapeutic procedures. Not for resale.

BD, BD Logo and all other trademarks are the property of Becton, Dickinson and Company. ©2007 BD



## Product Notices

1. Since applications vary, each investigator should titrate the reagent to obtain optimal results.
2. Please refer to [www.bdbiosciences.com/pharming/en/protocols](http://www.bdbiosciences.com/pharming/en/protocols) for technical protocols.
3. Caution: Sodium azide yields highly toxic hydrazoic acid under acidic conditions. Dilute azide compounds in running water before discarding to avoid accumulation of potentially explosive deposits in plumbing.

## References

- Denzin LK, Cresswell P. HLA-DM induces CLIP dissociation from MHC class II alpha beta dimers and facilitates peptide loading. *Cell*. 1995; 82(1):155-165. (Biology)
- Denzin LK, Hammond C, Cresswell P. HLA-DM interactions with intermediates in HLA-DR maturation and a role for HLA-DM in stabilizing empty HLA-DR molecules. *J Exp Med*. 1996; 184(186):2153-2165. (Biology)
- Denzin LK, Robbins NF, Carboy-Newcomb C, Cresswell P. Assembly and intracellular transport of HLA-DM and correction of the class II antigen-processing defect in T2 cells. *Immunity*. 1994; 1(7):595-606. (Biology)
- Kropshofer H, Hämmerling GJ, Vogt AB. How HLA-DM edits the MHC class II peptide repertoire: survival of the fittest. *Immunol Today*. 1997; 18(2):77-82. (Biology)
- Riberdy JM, Avva RR, Geuze HJ, Cresswell P. Transport and intracellular distribution of MHC class II molecules and associated invariant chain in normal and antigen-processing mutant cell lines. *J Cell Biol*. 1994; 125(126):1225-1237. (Biology)
- Riberdy JM, Newcomb JR, Surman MJ, Barbosa JA, Cresswell P. HLA-DR molecules from an antigen-processing mutant cell line are associated with invariant chain peptides. *Nature*. 1992; 360(6403):474-477. (Biology)