

Technical Data Sheet

Biotin Mouse Anti-Human TCR $\gamma\delta$ **Product Information**

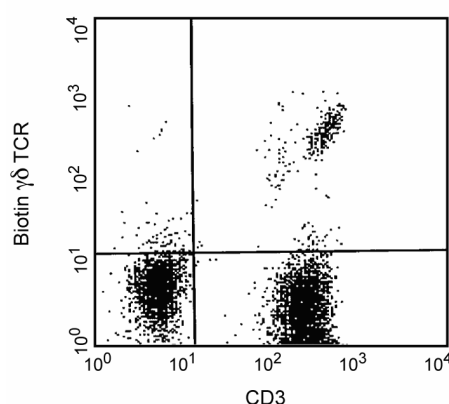
Material Number:	555716
Size:	0.1 mg
Concentration:	0.5 mg/ml
Clone:	B1
Isotype:	Mouse IgG1, κ
Reactivity:	QC Testing: Human
Storage Buffer:	Aqueous buffered solution containing $\leq 0.09\%$ sodium azide.

Description

Recognizes the $\gamma\delta$ T-cell receptor (TCR). This receptor complex consists of two disulfide-linked glycoproteins, a γ chain (45-60 kDa) and a δ subunit (40-60 kDa). $\gamma\delta$ TCR is expressed in less than 10% of human peripheral T cells. The physiological significance of $\gamma\delta$ T cells is still unknown. There is evidence indicating that these cells recognize bacterial ligands and some tumor cells. Reports suggest that $\gamma\delta$ T cells may play a role in the immune reaction during infection and in regulation of pathophysiological autoimmune responses.

Due to the fact that CD3 and TCR $\gamma\delta$ antibodies may recognize epitopes which are very close to each other and that CD3 was interfering with the clone B1 antibody binding but not with the clone 11F2 antibody, we recommend to use clone 11F2 antibody to perform double staining TCR $\gamma\delta$ and CD3.

This antibody is routinely tested by flow cytometric analysis. Other applications were tested at BD Biosciences Pharmingen during antibody development only or reported in the literature.



Profile of CD3+ peripheral blood lymphocytes analyzed on a FACScan (BDIS, San Jose, CA)

Preparation and Storage

The antibody was conjugated with biotin under optimum conditions, and unreacted biotin was removed. The monoclonal antibody was purified from tissue culture supernatant or ascites by affinity chromatography. Store undiluted at 4°C and protected from prolonged exposure to light. Do not freeze.

Application Notes**Application**

Flow cytometry	Routinely Tested
----------------	------------------

Suggested Companion Products

Catalog Number	Name	Size	Clone
555747	Biotin Mouse IgG1 κ Isotype Control	100 tests	MOPC-21
554061	PE Streptavidin	0.5 mg	(none)

Product Notices**BD Biosciences**

bdbiosciences.com

United States	Canada	Europe	Japan	Asia Pacific	Latin America/Caribbean
877.232.8995	888.259.0187	32.53.720.550	0120.8555.90	65.6861.0633	55.11.5185.9995

For country-specific contact information, visit bdbiosciences.com/how_to_order/

Conditions: The information disclosed herein is not to be construed as a recommendation to use the above product in violation of any patents. BD Biosciences will not be held responsible for patent infringement or other violations that may occur with the use of our products. Purchase does not include or carry any right to resell or transfer this product either as a stand-alone product or as a component of another product. Any use of this product other than the permitted use without the express written authorization of Becton Dickinson and Company is strictly prohibited.

For Research Use Only. Not for use in diagnostic or therapeutic procedures. Not for resale.

BD, BD Logo and all other trademarks are the property of Becton, Dickinson and Company. ©2008 BD



1. Since applications vary, each investigator should titrate the reagent to obtain optimal results.
2. Please refer to www.bdbiosciences.com/pharming/en/protocols for technical protocols.
3. Caution: Sodium azide yields highly toxic hydrazoic acid under acidic conditions. Dilute azide compounds in running water before discarding to avoid accumulation of potentially explosive deposits in plumbing.

References

Barclay NA, Brown MH, Birkeland ML, et al, ed. *The Leukocyte Antigen FactsBook*. San Diego, CA: Academic Press; 1997. (Biology)

Breit TM, Wolvers-Tettero IL, van Dongen JJ. Receptor diversity of human T-cell receptor gamma delta expressing cells. *Prog Histochem Cytochem*. 1992; 26(1-4):182-193. (Biology)

Guesdon JL, Ternynck T, Avrameas S. The use of avidin-biotin interaction in immunoenzymatic techniques. *J Histochem Cytochem*. 1979; 27(8):1131-1139. (Biology)

Kabelitz D. Function and specificity of human gamma/delta-positive T cells. *Crit Rev Immunol*. 1992; 11(5):281-303. (Biology)

Kabelitz D, Pechhold K, Bender A, et al. Activation and activation-driven death of human gamma/delta T cells. *Immunol Rev*. 1991; 120:71-88. (Biology)