

## Technical Data Sheet

## PE Mouse Anti-Human HLA-DR

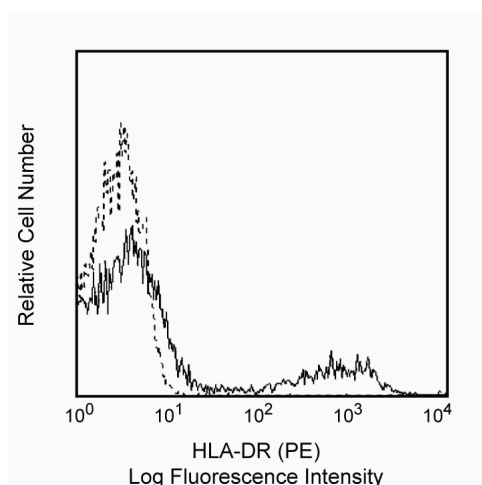
## Product Information

<b>Material Number:</b>	<b>555561</b>
<b>Size:</b>	100 tests
<b>Vol. per Test:</b>	20 µl
<b>Clone:</b>	TU36
<b>Isotype:</b>	Mouse IgG2b κ
<b>Reactivity:</b>	Human
	Tested in Development: Baboon, Rhesus, Cynomolgus, Dog, Rabbit
<b>Storage Buffer:</b>	Aqueous buffered solution containing BSA and ≤0.09% sodium azide.

## Description

Reacts with a monomorphic epitope of major histocompatibility Class II HLA-DR antigens expressed on B cells, activated T cells, and antigen presenting cells. Detects the αβ complex and not the isolated chains. This antibody fixes complement.

This antibody is routinely tested by flow cytometric analysis. Other applications were tested at BD Biosciences Pharmingen during antibody development only or reported in the literature.



*Profile of peripheral blood lymphocytes analyzed on a FACScan (BDIS, San Jose, CA)*

## Preparation and Storage

The monoclonal antibody was purified from tissue culture supernatant or ascites by affinity chromatography.

The antibody was conjugated with R-PE under optimum conditions, and unconjugated antibody and free PE were removed by gel filtration chromatography.

Store undiluted at 4° C and protected from prolonged exposure to light. Do not freeze.

## Application Notes

## Application

Flow cytometry

Routinely Tested

## Suggested Companion Products

Catalog Number	Name	Size	Clone
555743	PE Mouse IgG2b κ Isotype Control	100 tests	27-35

## BD Biosciences

bdbiosciences.com

United States	Canada	Europe	Japan	Asia Pacific	Latin America/Caribbean
877.232.8995	888.259.0187	32.53.720.550	0120.8555.90	65.6861.0633	55.11.5185.9995

For country-specific contact information, visit [bdbiosciences.com/how\\_to\\_order/](http://bdbiosciences.com/how_to_order/)

Conditions: The information disclosed herein is not to be construed as a recommendation to use the above product in violation of any patents. BD Biosciences will not be held responsible for patent infringement or other violations that may occur with the use of our products. Purchase does not include or carry any right to resell or transfer this product either as a stand-alone product or as a component of another product. Any use of this product other than the permitted use without the express written authorization of Becton Dickinson and Company is strictly prohibited.

For Research Use Only. Not for use in diagnostic or therapeutic procedures. Not for resale.

BD, BD Logo and all other trademarks are the property of Becton, Dickinson and Company. ©2006 BD



BD

BD Biosciences

## Product Notices

1. This reagent has been pre-diluted for use at the recommended Volume per Test. We typically use  $1 \times 10^6$  cells in a 100- $\mu$ l experimental sample (a test).
2. Since applications vary, each investigator should titrate the reagent to obtain optimal results.
3. Please refer to [www.bdbiosciences.com/pharmingen/protocols](http://www.bdbiosciences.com/pharmingen/protocols) for technical protocols.
4. Caution: Sodium azide yields highly toxic hydrazoic acid under acidic conditions. Dilute azide compounds in running water before discarding to avoid accumulation of potentially explosive deposits in plumbing.
5. Source of all serum proteins is from USDA inspected abattoirs located in the United States.

## References

Pawelec G, Ziegler A, Wernet P. Dissection of human allostimulatory determinants with cloned T cells: stimulation inhibition by monoclonal antibodies TU22, 34, 35, 36, 37, 39, 43, and 58 against distinct human MHC class II molecules. *Hum Immunol.* 1985; 12(3):165-176.(Biology)

Ziegler A, Heinig J, Muller C, et al. Analysis by sequential immunoprecipitations of the specificities of the monoclonal antibodies TU22,34,35,36,37,39,43,58 and YD1/63.HLK directed against human HLA class II antigens. *Immunobiology.* 1986; 171(1-2):77-92.(Biology)