

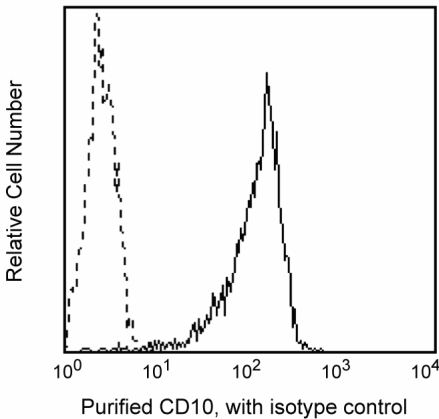
Technical Data Sheet

Purified Mouse Anti-Human CD10

Product Information	
Material Number:	555373
Size:	0.1 mg
Concentration:	0.5 mg/ml
Clone:	HI10a
Isotype:	Mouse IgG1, κ
Reactivity:	QC Testing: Human
Workshop:	V CD10.7
Storage Buffer:	Aqueous buffered solution containing ≤0.09% sodium azide.

**Description**

Reacts with neutral endopeptidase, a 100 kDa type II transmembrane glycoprotein, otherwise known as the common acute lymphoblastic leukemia antigen (CALLA). CD10 is expressed on a wide variety of normal and neoplastic cell types. Normal cells expressing CD10 include granulocytes, a subset of B-cell progenitors, germinal center cells and fibroblasts.



Preparation and Storage

The monoclonal antibody was purified from tissue culture supernatant or ascites by affinity chromatography. Store undiluted at 4° C.

Application Notes

Application

Flow cytometry	Routinely Tested
----------------	------------------

Suggested Companion Products

Catalog Number	Name	Size	Clone
555746	Purified Mouse IgG1, κ Isotype Control	0.1 mg	MOPC-21
555988	FITC Goat Anti-Mouse IgG/IgM	0.5 mg	Polyclonal

BD Biosciences

[www.bdbiosciences.com](http://www.bdbiosciences.com)

United States	Canada	Europe	Japan	Asia Pacific	Latin America/Caribbean
877.232.8995	888.259.0187	32.53.720.550	0120.8555.90	65.6861.0633	55.11.5185.9995

For country-specific contact information, visit [www.bdbiosciences.com/how\\_to\\_order/](http://www.bdbiosciences.com/how_to_order/)

Conditions: The information disclosed herein is not to be construed as a recommendation to use the above product in violation of any patents. BD Biosciences will not be held responsible for patent infringement or other violations that may occur with the use of our products. Purchase does not include or carry any right to resell or transfer this product either as a stand-alone product or as a component of another product. Any use of this product other than the permitted use without the express written authorization of Becton Dickinson and Company is strictly prohibited.

For Research Use Only. Not for use in diagnostic or therapeutic procedures. Not for resale.

BD, BD Logo and all other trademarks are the property of Becton, Dickinson and Company. ©2007 BD



## Product Notices

1. Since applications vary, each investigator should titrate the reagent to obtain optimal results.
2. Please refer to [www.bdbiosciences.com/pharmlngen/protocols](http://www.bdbiosciences.com/pharmlngen/protocols) for technical protocols.
3. Caution: Sodium azide yields highly toxic hydrazoic acid under acidic conditions. Dilute azide compounds in running water before discarding to avoid accumulation of potentially explosive deposits in plumbing.

## References

- Barclay NA, Brown MH, Birkeland ML, et al, ed. *The Leukocyte Antigen FactsBook*. San Diego, CA: Academic Press; 1997.(Biology)
- Knapp W, Dorken B, Rieber EP, et al, ed. *Leucocyte Typing IV*. New York: Oxford University Press; 1989.(Biology)
- Letarte M, Vera S, Tran R, et al. Common acute lymphocytic leukemia antigen is identical to neutral endopeptidase. *J Exp Med*. 1988; 168(4):1247-1253.(Biology)