

## Technical Data Sheet

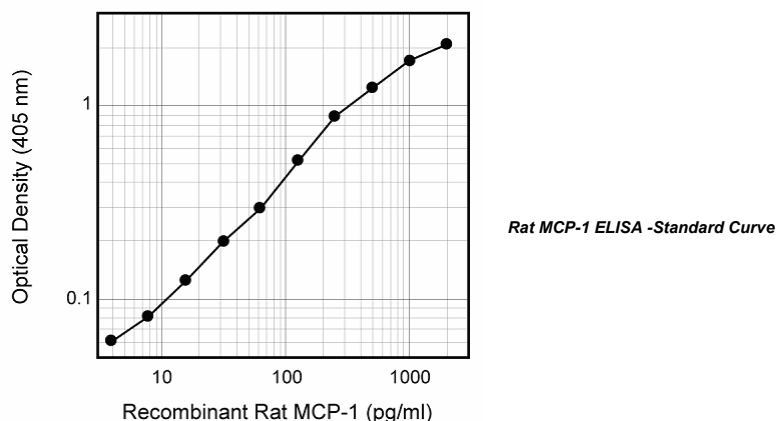
## Biotin Mouse Anti-Rat MCP-1

## Product Information

Material Number:	555074
Size:	0.5 mg
Concentration:	0.5 mg/ml
Clone:	B4
Immunogen:	Recombinant Rat MCP-1 Protein
Isotype:	Mouse IgG1
Reactivity:	QC Testing: Rat
Storage Buffer:	Aqueous buffered solution containing ≤0.09% sodium azide.

## Description

The B4 antibody reacts with rat Monocyte Chemoattractant Protein 1 (MCP-1). The immunogen used to generate this hybridoma was recombinant rat MCP-1 protein.



## Preparation and Storage

The monoclonal antibody was purified from tissue culture supernatant or ascites by affinity chromatography.

The antibody was conjugated with biotin under optimum conditions, and unreacted biotin was removed.

Store undiluted at 4° C and protected from prolonged exposure to light. Do not freeze.

## Application Notes

## Application

ELISA Detection	Routinely Tested
Immunoprecipitation	Reported

## Recommended Assay Procedure:

**ELISA Detection:** The biotinylated B4 antibody (Cat. No. 555074) can be used as the detection antibody in a sandwich ELISA for measuring rat MCP-1 protein levels in conjunction with purified C4 antibody (Cat. No. 555072) as the capture antibody and recombinant rat MCP-1 protein (Cat. No. 555110) as the standard. This biotinylated detection antibody should be titrated in the range of 0.5 to 2 µg/ml to determine its optimal concentration for ELISA. To obtain linear standard curves, doubling dilutions of rat MCP-1 protein ranging from ~2,000 to 5 pg/ml are recommended for inclusion in each ELISA plate. For specific methodology, please visit the protocols section or chapter on ELISA in the Immune Function Handbook, both of which are posted on our web site, [www.bdbiosciences.com](http://www.bdbiosciences.com). This ELISA pair shows no cross-reactivity with rat MIP-1α, MIP-1β, RANTES, MIP-2 or KC.

## BD Biosciences

[www.bdbiosciences.com](http://www.bdbiosciences.com)

United States	Canada	Europe	Japan	Asia Pacific	Latin America/Caribbean
877.232.8995	888.259.0187	32.53.720.550	0120.8555.90	65.6861.0633	55.11.5185.9995

For country-specific contact information, visit [www.bdbiosciences.com/how\\_to\\_order/](http://www.bdbiosciences.com/how_to_order/)

Conditions: The information disclosed herein is not to be construed as a recommendation to use the above product in violation of any patents. BD Biosciences will not be held responsible for patent infringement or other violations that may occur with the use of our products. Purchase does not include or carry any right to resell or transfer this product either as a stand-alone product or as a component of another product. Any use of this product other than the permitted use without the express written authorization of Becton Dickinson and Company is strictly prohibited.

For Research Use Only. Not for use in diagnostic or therapeutic procedures. Not for resale.

BD, BD Logo and all other trademarks are the property of Becton, Dickinson and Company. ©2007 BD



**Note:** This ELISA pair is recommended primarily for measuring cytokine from experimental cell culture systems. These ELISA reagents are not recommended for assaying serum or plasma samples. For measuring MCP-1 in serum or plasma the rat MCP-1 BD OptEIA™ ELISA Set, Cat. No. 555130, is specially formulated and recommended.

**IP:** The B4 antibody has been reported to be useful for immunoprecipitation studies. Please note that this application is not routinely tested at BD Biosciences Pharmingen.

### Suggested Companion Products

Catalog Number	Name	Size	Clone
555072	Purified Mouse Anti-Rat MCP-1	0.5 mg	C4
555110	Recombinant Rat MCP-1	5 µg	(none)
555130	Rat MCP-1 ELISA Set	20 tests	(none)

### Product Notices

1. Since applications vary, each investigator should titrate the reagent to obtain optimal results.
2. Please refer to [www.bdbiosciences.com/pharmingen/protocols](http://www.bdbiosciences.com/pharmingen/protocols) for technical protocols.
3. Caution: Sodium azide yields highly toxic hydrazoic acid under acidic conditions. Dilute azide compounds in running water before discarding to avoid accumulation of potentially explosive deposits in plumbing.

### References

Sakanashi Y, Takeya M, Yoshimura T, Feng L, Morioka T, Takahashi K. Kinetics of macrophage subpopulations and expression of monocyte chemoattractant protein-1 (MCP-1) in bleomycin-induced lung injury of rats studied by a novel monoclonal antibody against rat MCP-1. *J Leukoc Biol.* 1994; 56(6):741-750.  
(Clone-specific: ELISA, Immunoprecipitation)