

Technical Data Sheet

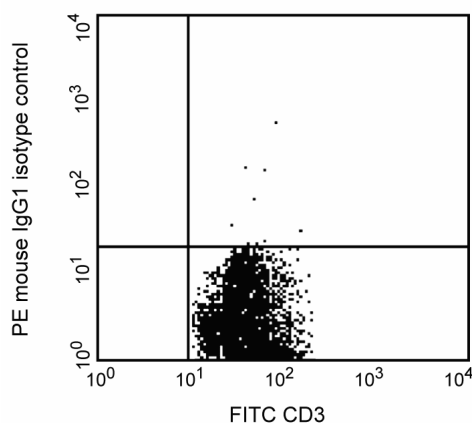
PE Mouse IgG1 Kappa Isotype Control

Product Information

Material Number:	551436
Size:	50 tests
Vol. per Test:	20 µl
Clone:	MOPC-21
Isotype:	Mouse IgG1, κ
Reactivity:	QC Testing: Baboon or Rhesus or Cynomolgus
Storage Buffer:	Aqueous buffered solution containing BSA and ≤0.09% sodium azide.

Description

The MOPC-21 immunoglobulin is a mouse myeloma protein. The MOPC-21 immunoglobulin was selected as an isotype control following screening for low background on a variety of mouse and human tissues.



Profile of PMA-stimulated (24 hours) permeabilized peripheral blood lymphocytes of Rhesus macaque monkey (macaca mulatta) analyzed by flow cytometry.

Preparation and Storage

The monoclonal antibody was purified from tissue culture supernatant or ascites by affinity chromatography.

The antibody was conjugated with R-PE under optimum conditions, and unconjugated antibody and free PE were removed.

Store undiluted at 4°C and protected from prolonged exposure to light. Do not freeze.

Application Notes

Application

Isotype control	Routinely Tested
Intracellular staining (flow cytometry)	Routinely Tested

Product Notices

1. This reagent has been pre-diluted for use at the recommended Volume per Test. We typically use 1×10^6 cells in a 100-µl experimental sample (a test).
2. Since applications vary, each investigator should titrate the reagent to obtain optimal results.
3. Please refer to www.bdbiosciences.com/pharmingen/protocols for technical protocols.
4. For fluorochrome spectra and suitable instrument settings, please refer to our Fluorochrome Web Page at www.bdbiosciences.com/colors.
5. Caution: Sodium azide yields highly toxic hydrazoic acid under acidic conditions. Dilute azide compounds in running water before discarding to avoid accumulation of potentially explosive deposits in plumbing.
6. Source of all serum proteins is from USDA inspected abattoirs located in the United States.

BD Biosciences

bdbiosciences.com

United States	Canada	Europe	Japan	Asia Pacific	Latin America/Caribbean
877.232.8995	888.268.5430	32.53.720.550	0120.8555.90	65.6861.0633	0800.771.7157

For country-specific contact information, visit bdbiosciences.com/how_to_order/

Conditions: The information disclosed herein is not to be construed as a recommendation to use the above product in violation of any patents. BD Biosciences will not be held responsible for patent infringement or other violations that may occur with the use of our products. Purchase does not include or carry any right to resell or transfer this product either as a stand-alone product or as a component of another product. Any use of this product other than the permitted use without the express written authorization of Becton Dickinson and Company is strictly prohibited.

For Research Use Only. Not for use in diagnostic or therapeutic procedures. Not for resale.

BD, BD Logo and all other trademarks are the property of Becton, Dickinson and Company. ©2011 BD

