

Technical Data Sheet

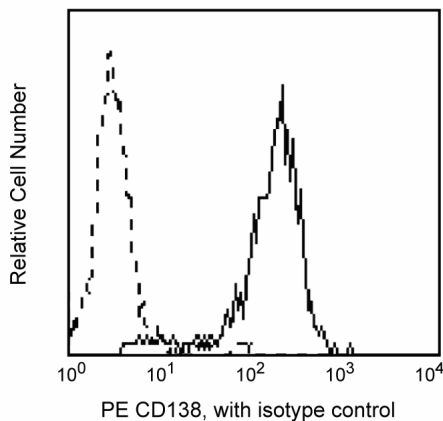
PE Mouse Anti-Human CD138

Product Information

|                  |   |
|------------------|---|
| Material Number: | 550805  |
| Alternate Name:  | Syndecan-1  |
| Size:            | 100 tests   |
| Vol. per Test:   | 20 µl   |
| Clone:           | DL-101  |
| Isotype:         | Mouse IgG1, κ   |
| Reactivity:      | QC Testing: Human   |
| Workshop:        | NA  |
| Storage Buffer:  | Aqueous buffered solution containing BSA and ≤0.09% sodium azide. |

Description

Reacts with CD138 (Syndecan-1), an 85-92 kDa single chain transmembrane protein, expressed on multiple myeloma-derived cell lines and malignant plasma cell populations. It is also expressed on pre-B cells, immature B cells and plasma cells, but not on mature circulating B-lymphocytes. Syndecan-1 is a member of the family of transmembrane heparan sulfate proteoglycans. It is also expressed on some non-hematopoietic cells, including embryonic mesenchymal cells, vascular smooth muscle cells, endothelial and neural cells. CD138 binds to many extracellular matrix proteins through its heparan sulfate side-chains, like fibronectin, collagen types I, III and V, tenascin, thrombospondin, and antithrombin III. It is considered an extracellular matrix receptor that may serve as a co-receptor for fibroblast growth factor and related molecules. Monoclonal antibody DL-101 does not block the binding of clone B-B4 (another anti-syndecan-1 antibody) or Mi15 by flow cytometric analysis.



Preparation and Storage

The monoclonal antibody was purified from tissue culture supernatant or ascites by affinity chromatography. The antibody was conjugated with R-PE under optimum conditions, and unconjugated antibody and free PE were removed. Store undiluted at 4° C and protected from prolonged exposure to light. Do not freeze.

Application Notes

Application

|                |                  |
|----------------|------------------|
| Flow cytometry | Routinely Tested |
|----------------|------------------|

Suggested Companion Products

| Catalog Number | Name                             | Size      | Clone   |
|----------------|----------------------------------|-----------|---------|
| 555749         | PE Mouse IgG1, κ Isotype Control | 100 tests | MOPC-21 |

BD Biosciences

[www.bdbiosciences.com](http://www.bdbiosciences.com)

|               |              |               |              |              |                         |
|---------------|--------------|---------------|--------------|--------------|-------------------------|
| United States | Canada       | Europe        | Japan        | Asia Pacific | Latin America/Caribbean |
| 877.232.8995  | 888.259.0187 | 32.53.720.550 | 0120.8555.90 | 65.6861.0633 | 55.11.5185.9995         |

For country-specific contact information, visit [www.bdbiosciences.com/how\\_to\\_order/](http://www.bdbiosciences.com/how_to_order/)

Conditions: The information disclosed herein is not to be construed as a recommendation to use the above product in violation of any patents. BD Biosciences will not be held responsible for patent infringement or other violations that may occur with the use of our products. Purchase does not include or carry any right to resell or transfer this product either as a stand-alone product or as a component of another product. Any use of this product other than the permitted use without the express written authorization of Becton Dickinson and Company is strictly prohibited.  
For Research Use Only. Not for use in diagnostic or therapeutic procedures. Not for resale.  
BD, BD Logo and all other trademarks are the property of Becton, Dickinson and Company. ©2007 BD



## Product Notices

1. This reagent has been pre-diluted for use at the recommended Volume per Test. We typically use 1 X 10<sup>6</sup> cells in a 100- $\mu$ l experimental sample (a test).
2. Since applications vary, each investigator should titrate the reagent to obtain optimal results.
3. Please refer to [www.bdbiosciences.com/pharming/en/protocols](http://www.bdbiosciences.com/pharming/en/protocols) for technical protocols.
4. Caution: Sodium azide yields highly toxic hydrazoic acid under acidic conditions. Dilute azide compounds in running water before discarding to avoid accumulation of potentially explosive deposits in plumbing.
5. Source of all serum proteins is from USDA inspected abattoirs located in the United States.

## References

- Kishimoto T, von dem Borne AEG, Goyert SM, et al., ed. *Leucocyte Typing VI: White Cell Differentiation Antigens*. London: Garland Publishing; 1997. (Clone-specific: Flow cytometry)
- Barclay NA, Brown MH, Birkeland ML, et al, ed. *The Leukocyte Antigen FactsBook*. San Diego, CA: Academic Press; 1997. (Clone-specific: Flow cytometry)
- Costes V, Magen V, Legouffe E, et al. The Mi15 monoclonal antibody (anti-syndecan-1) is a reliable marker for quantifying plasma cells in paraffin-embedded bone marrow biopsy specimens. *Hum Pathol*. 1999; 30(12):1405-1411. (Clone-specific: Flow cytometry)
- Gattei V, Godeas C, Degan M, Rossi FM, Aldinucci D, Pinto A. Characterization of anti-CD138 monoclonal antibodies as tools for investigating the molecular polymorphism of syndecan-1 in human lymphoma cells. *Br J Haematol*. 1999; 104(1):152-162. (Clone-specific: Flow cytometry)