

## Technical Data Sheet

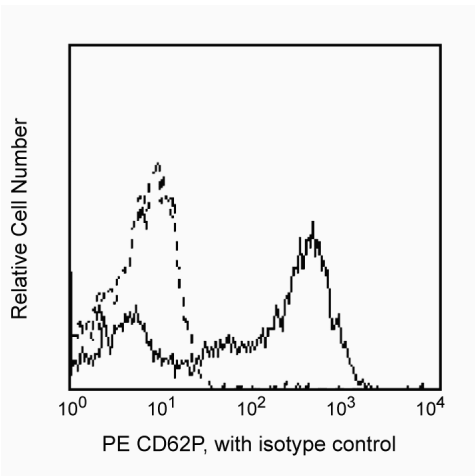
## PE Mouse Anti-Human CD62P

## Product Information

<b>Material Number:</b>	550561
<b>Alternate Name:</b>	P-Selectin
<b>Size:</b>	50 tests
<b>Vol. per Test:</b>	20 µl
<b>Clone:</b>	AC1.2
<b>Isotype:</b>	Mouse IgG1, κ
<b>Reactivity:</b>	Human
	QC Testing: Baboon or Cynomolgus or Rhesus
<b>Workshop:</b>	V S058
<b>Storage Buffer:</b>	Aqueous buffered solution containing BSA and ≤0.09% sodium azide.

## Description

Reacts with the human form of the 140 kDa membrane glycoprotein, P-selectin, formerly known as platelet activation-dependent granule external membrane protein (PADGEM), or granule membrane protein (GMP-140). P-selectin is stored in the α-granules of platelets and the Weibel-Palade bodies of endothelial cells, and is rapidly transported to the plasma membrane upon activation. P-selectin is thought to mediate the initial adhesive interactions of neutrophils and monocytes with endothelium in inflammatory responses, and of activated platelets to neutrophils and monocytes in hemostasis. This antibody is a non-blocking monoclonal antibody and is suitable for immunohistochemical staining of formalin-fixed, paraffin embedded, tissue sections. Clone AC1.2 also cross reacts with activated platelets of baboon, and both rhesus and cynomolgus macaque monkeys. The reactivity on resting and activated platelets is similar to that observed on resting and activated platelets of human donors.



*Profile of CD62P Ab reactivity on activated platelets of cynomolgus macaque (Macaca fascicularis) monkey analyzed by flow cytometry*

## Preparation and Storage

The monoclonal antibody was purified from tissue culture supernatant or ascites by affinity chromatography.

The antibody was conjugated with R-PE under optimum conditions, and unconjugated antibody and free PE were removed.

Store undiluted at 4°C and protected from prolonged exposure to light. Do not freeze.

## Application Notes

## Application

Flow cytometry	Routinely Tested
----------------	------------------

## Suggested Companion Products

Catalog Number	Name	Size	Clone
556650	PE Mouse IgG1, κ Isotype Control	50 tests	MOPC-21

## Product Notices

1. This reagent has been pre-diluted for use at the recommended Volume per Test. We typically use  $1 \times 10^6$  cells in a 100-µl experimental sample (a test).

## BD Biosciences

bdbiosciences.com

United States 877.232.8995	Canada 888.268.5430	Europe 32.53.720.550	Japan 0120.8555.90	Asia Pacific 65.6861.0633	Latin America/Caribbean 0800.771.7157
-------------------------------	------------------------	-------------------------	-----------------------	------------------------------	--

For country-specific contact information, visit [bdbiosciences.com/how\\_to\\_order/](http://bdbiosciences.com/how_to_order/)

Conditions: The information disclosed herein is not to be construed as a recommendation to use the above product in violation of any patents. BD Biosciences will not be held responsible for patent infringement or other violations that may occur with the use of our products. Purchase does not include or carry any right to resell or transfer this product either as a stand-alone product or as a component of another product. Any use of this product other than the permitted use without the express written authorization of Becton Dickinson and Company is strictly prohibited.

For Research Use Only. Not for use in diagnostic or therapeutic procedures. Not for resale.

BD, BD Logo and all other trademarks are the property of Becton, Dickinson and Company. ©2011 BD



2. Since applications vary, each investigator should titrate the reagent to obtain optimal results.
3. Please refer to [www.bdbiosciences.com/pharming/en/protocols](http://www.bdbiosciences.com/pharming/en/protocols) for technical protocols.
4. For fluorochrome spectra and suitable instrument settings, please refer to our Fluorochrome Web Page at [www.bdbiosciences.com/colors](http://www.bdbiosciences.com/colors).
5. Caution: Sodium azide yields highly toxic hydrazoic acid under acidic conditions. Dilute azide compounds in running water before discarding to avoid accumulation of potentially explosive deposits in plumbing.
6. Source of all serum proteins is from USDA inspected abattoirs located in the United States.

## References

- Albelda SM. Role of integrins and other cell adhesion molecules in tumor progression and metastasis. *Lab Invest.* 1993; 68(1):4-17. (Biology)
- Bevilacqua MP. Endothelial-leukocyte adhesion molecules. *Annu Rev Immunol.* 1993; 11:767-804. (Biology)
- Dore M, Korthuis RJ, Granger DN, Entman ML, Smith CW. P-selectin mediates spontaneous leukocyte rolling in vivo. *Blood.* 1993; 82(4):1308-1316. (Biology)
- Groves RW, Allen MH, Ross EL, Ahsan G, Barker JN, MacDonald DM. Expression of selectin ligands by cutaneous squamous cell carcinoma. *Am J Pathol.* 1993; 143(4):1220-1225. (Biology)
- Johnson-Tidey RR, McGregor JL, Taylor PR, Poston RN. Increase in the adhesion molecule P-selectin in endothelium overlying atherosclerotic plaques. Coexpression with intercellular adhesion molecule-1. *Am J Pathol.* 1994; 144(5):952-961. (Biology)
- Kansas GS. Selectins and their ligands: current concepts and controversies. *Blood.* 1997; 88(9):3259-3287. (Biology)
- Kishimoto T, von dem Borne AEG, Goyert SM, et al., ed. *Leucocyte Typing VI: White Cell Differentiation Antigens*. London: Garland Publishing; 1997. (Biology)
- Lorant DE, Topham MK, Whatley RE, et al. Inflammatory roles of P-selectin. *J Clin Invest.* 1993; 92(2):559-570. (Biology)
- Nagata K, Tsuji T, Todoroki N, et al. Activated platelets induce superoxide anion release by monocytes and neutrophils through P-selectin (CD62). *J Immunol.* 1993; 151(6):3267-3273. (Biology)
- Pigott R, Power C. *The Adhesion Molecule Facts Book*. 1993:173. (Biology)
- Schlossman SF, Boumsell L, Gilks W, et al, ed. *Leukocyte Typing V: White Cell Differentiation Antigens*. New York: Oxford University Press; 1995. (Clone-specific)
- Stone JP, Wagner DD. P-selectin mediates adhesion of platelets to neuroblastoma and small cell lung cancer. *J Clin Invest.* 1993; 92(2):804-813. (Biology)