

Technical Data Sheet

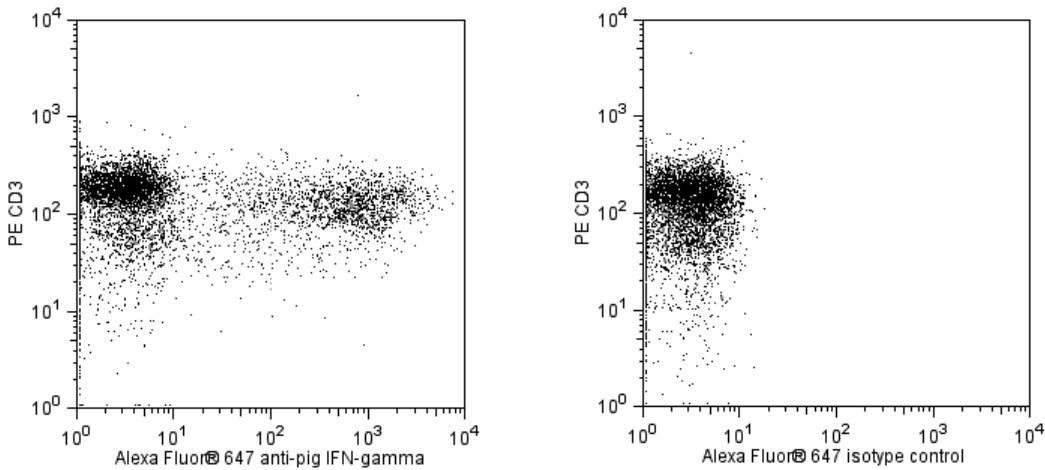
Alexa Fluor® 647 Mouse Anti-Pig IFN-γ

Product Information

Material Number:	561480
Alternate Name:	IFNG; IFN-gamma; Interferon gamma; Interferon-gamma
Size:	50 µg
Concentration:	0.2 mg/ml
Clone:	P2G10
Immunogen:	Recombinant pig IFN-γ protein
Isotype:	Mouse IgG1, κ
Reactivity:	QC Testing: Pig
Storage Buffer:	Aqueous buffered solution containing ≤0.09% sodium azide.

Description

The P2G10 monoclonal antibody specifically binds to porcine interferon-γ (IFN-γ). The immunogen used to generate the P2G10 hybridoma was recombinant pig IFN-γ protein.



**Multicolor flow cytometric analysis of IFN-γ expression by stimulated pig lymphocytes.** Pig peripheral blood mononuclear cells were stimulated for 20 h with Leukocyte Activation Cocktail, with BD GolgiPlug™ (Cat. No. 550583). The cells were fixed using BD Cytofix™ Fixation Buffer (Cat. No. 554655) and permeabilized with BD Perm/Wash™ Buffer (Cat. No. 554723). The cells were stained simultaneously with PE Mouse Anti-Pig CD3ε antibody (Cat. No. 561485) and Alexa Fluor® 647 Mouse Anti-Pig IFN-γ antibody (Cat. No. 561480; Left Panel) or an Alexa Fluor® 647 Mouse IgG1 Isotype Control (Cat. No. 557732, Right Panel). Two-color flow cytometric dot plots showing the correlated expression of IFN-γ (or Ig Isotype control staining) versus CD3 were derived from gated events with the forward and side light-scatter characteristics of intact lymphocytes. Flow cytometry was performed using a BD™ LSR II Flow Cytometer System.

Preparation and Storage

The monoclonal antibody was purified from tissue culture supernatant or ascites by affinity chromatography. The antibody was conjugated to Alexa Fluor® 647 under optimum conditions, and unreacted Alexa Fluor® 647 was removed. Store undiluted at 4°C and protected from prolonged exposure to light. Do not freeze.

Application Notes

Application

Intracellular staining (flow cytometry)	Routinely Tested
---	------------------

BD Biosciences

bdbiosciences.com

United States	Canada	Europe	Japan	Asia Pacific	Latin America/Caribbean
877.232.8995	888.268.5430	32.53.720.550	0120.8555.90	65.6861.0633	0800.771.7157

For country-specific contact information, visit [bdbiosciences.com/how\\_to\\_order/](http://bdbiosciences.com/how_to_order/)

Conditions: The information disclosed herein is not to be construed as a recommendation to use the above product in violation of any patents. BD Biosciences will not be held responsible for patent infringement or other violations that may occur with the use of our products. Purchase does not include or carry any right to resell or transfer this product either as a stand-alone product or as a component of another product. Any use of this product other than the permitted use without the express written authorization of Becton Dickinson and Company is strictly prohibited.

For Research Use Only. Not for use in diagnostic or therapeutic procedures. Not for resale.

BD, BD Logo and all other trademarks are the property of Becton, Dickinson and Company. ©2011 BD



## Suggested Companion Products

Catalog Number	Name	Size	Clone
550583	Leukocyte Activation Cocktail, with BD GolgiPlug™	200 µl	(none)
554655	Fixation Buffer	100 ml	(none)
554723	Perm/Wash Buffer	100 ml	(none)
561485	PE Mouse Anti-Pig CD3ε	50 µg	BB23-8E6-8C8
557732	Alexa Fluor® 647 Mouse IgG1 κ Isotype Control	100 tests	MOPC-21

## Product Notices

1. Since applications vary, each investigator should titrate the reagent to obtain optimal results.
2. Alexa Fluor® 647 fluorochrome emission is collected at the same instrument settings as for allophycocyanin (APC).
3. Alexa Fluor® is a registered trademark of Molecular Probes, Inc., Eugene, OR.
4. The Alexa Fluor®, Pacific Blue™, and Cascade Blue® dye antibody conjugates in this product are sold under license from Molecular Probes, Inc. for research use only, excluding use in combination with microarrays, or as analyte specific reagents. The Alexa Fluor® dyes (except for Alexa Fluor® 430), Pacific Blue™ dye, and Cascade Blue® dye are covered by pending and issued patents.
5. Caution: Sodium azide yields highly toxic hydrazoic acid under acidic conditions. Dilute azide compounds in running water before discarding to avoid accumulation of potentially explosive deposits in plumbing.
6. For fluorochrome spectra and suitable instrument settings, please refer to our Fluorochrome Web Page at [www.bdbiosciences.com/colors](http://www.bdbiosciences.com/colors).
7. Please refer to [www.bdbiosciences.com/pharming/en/protocols](http://www.bdbiosciences.com/pharming/en/protocols) for technical protocols.

## References

Mateu de Antonio E, Husmann RJ, Hansen R, et al. Quantitative detection of porcine interferon-gamma in response to mitogen, superantigen and recall viral antigen. *Vet Immunol Immunopathol.* 1998; 61(2-4):265-277. (Immunogen: ELISA)

Prussin C, Metcalfe DD. Detection of intracytoplasmic cytokine using flow cytometry and directly conjugated anti-cytokine antibodies. *J Immunol Methods.* 1995; 188(1):117-128. (Methodology: IC/FCM Block)