

S-Tag (D2K2V) XP® Rabbit mAbCell Signaling
TECHNOLOGY®

- ☐ Small 100 µl
(10 western blots)
- ☐ Petite 40 µl
(4 western blots)

Orders ■ 877-616-CELL (2355)
orders@cellsignal.com

Support ■ 877-678-TECH (8324)
info@cellsignal.com

Web ■ www.cellsignal.com

New 06/13

For Research Use Only. Not For Use In Diagnostic Procedures.**Applications**
W, IP, IF-IC, F
Transfected**Species Cross-Reactivity***
All**Isotype**
Rabbit IgG**

Background: Epitope tags are useful for the labeling and detection of proteins using immunoblotting, immunoprecipitation, and immunostaining techniques. Because of their small size, they are unlikely to affect the tagged protein's biochemical properties.

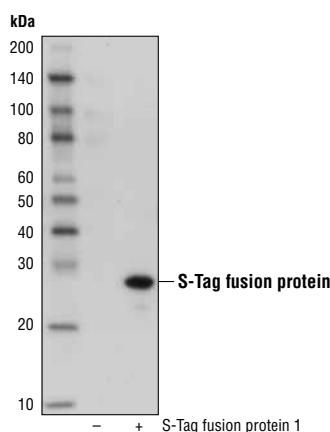
S-Tag is an epitope tag composed of a 15 residue peptide that, together with S-protein, comprises pancreatic ribonuclease S (1).

Specificity/Sensitivity: S-Tag (D2K2V) XP® Rabbit mAb recognizes transfected levels of recombinant protein containing an S-Tag.

Source/Purification: Monoclonal antibody is produced by immunizing animals with a synthetic S-Tag peptide.

Background References:

(1) Raines, R.T. et al. (2000) *Methods Enzymol* 326, 362-76.



Western blot analysis of extracts from 293T cells, untransfected (-) or transfected with an S-Tag fusion protein, using S-Tag (D2K2V) XP® Rabbit mAb.

Storage: Supplied in 10 mM sodium HEPES (pH 7.5), 150 mM NaCl, 100 µg/ml BSA, 50% glycerol and less than 0.02% sodium azide. Store at -20°C. Do not aliquot the antibody.

***Species cross-reactivity is determined by western blot.**

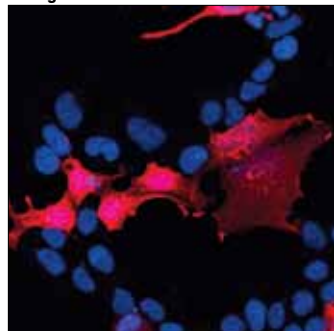
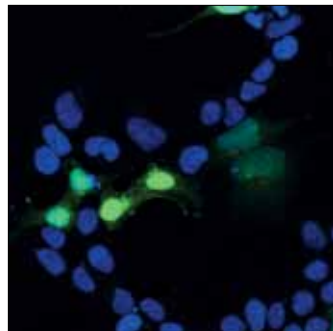
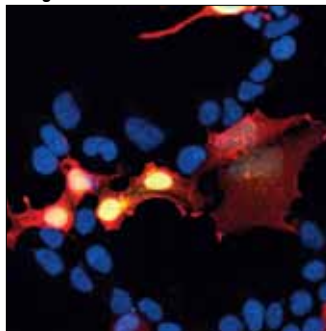
****Anti-rabbit secondary antibodies must be used to detect this antibody.**

Recommended Antibody Dilutions:

Western blotting	1:1000
Immunoprecipitation	1:50
Immunofluorescence (IF-IC)	1:1600
Flow Cytometry	1:200

For product specific protocols please see the web page for this product at www.cellsignal.com.

Please visit www.cellsignal.com for a complete listing of recommended complementary products.

S-Tag**GFP****Merge**

Confocal immunofluorescent analysis of 293T cells transfected with a GFP/S-Tag construct using S-Tag (D2K2V) XP® Rabbit mAb (red). Blue pseudocolor = DRAQ5® #4084 (fluorescent DNA dye).

IMPORTANT: For western blots, incubate membrane with diluted antibody in 5% w/v BSA, 1X TBS, 0.1% Tween-20 at 4°C with gentle shaking, overnight.

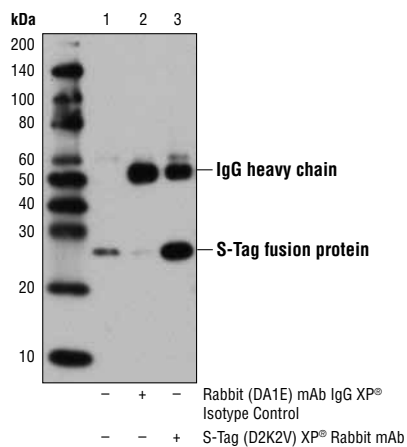
DRAQ5® is a registered trademark of Biostatus Limited.

Alexa Fluor® is a registered trademark of Molecular Probes, Inc.

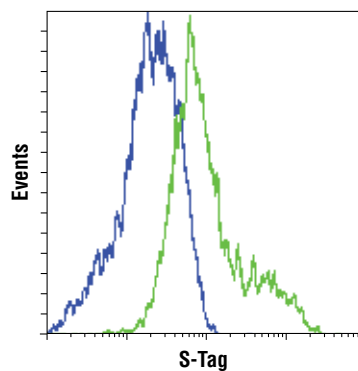
Applications Key: W—Western IP—Immunoprecipitation IHC—Immunohistochemistry ChIP—Chromatin Immunoprecipitation IF—Immunofluorescence F—Flow cytometry E-P—ELISA-Peptide

Species Cross-Reactivity Key: H—human M—mouse R—rat Hm—hamster Mk—monkey Mi—mink C—chicken Dm—D. melanogaster X—Xenopus Z—zebrafish B—bovine

Dg—dog Pg—pig Sc—S. cerevisiae Ce—C. elegans Hr—horse All—all species expected Species enclosed in parentheses are predicted to react based on 100% homology.



Immunoprecipitation of transfected S-Tag fusion protein from 293T cell extracts, using Rabbit (DA1E) mAb IgG XP® Isotype Control #3900 (lane 2) or S-Tag (D2K2V) XP® Rabbit mAb (lane 3). Lane 1 is 10% input. Western blot analysis was performed using S-Tag (D2K2V) XP® Rabbit mAb.



Flow cytometric analysis of 293T cells, untransfected (blue) or transfected with a GFP/S-Tag construct (green), using S-Tag (D2K2V) XP® Rabbit mAb. Anti-rabbit IgG (H+L), F(ab')₂ Fragment (Alexa Fluor® 647 Conjugate) #4414 was used as a secondary antibody.