

Technical Data Sheet

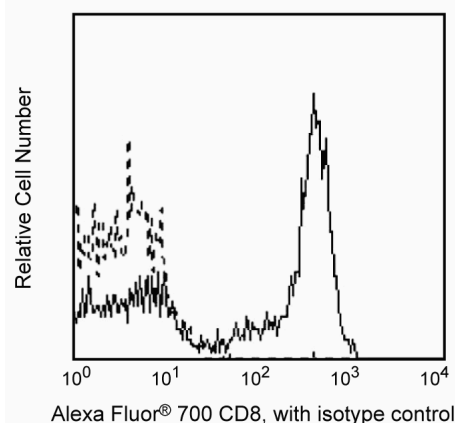
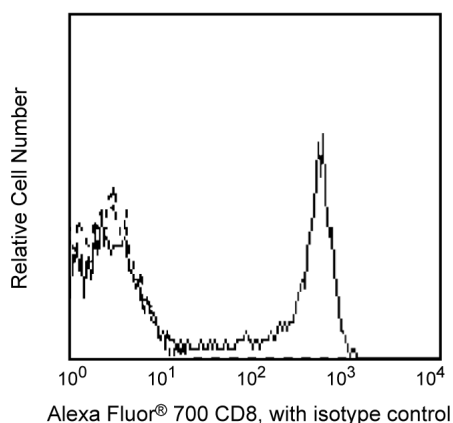
Alexa Fluor® 700 Mouse Anti-Human CD8

Product Information

Material Number:	561026
Alternate Name:	CD8 α ; CD8A; CD8 alpha; Leu2; MAL; T8; p32
Size:	25 μ g
Concentration:	0.2 mg/ml
Clone:	RPA-T8
Isotype:	Mouse IgG1, κ
Reactivity:	QC Testing: Rhesus, Cynomolgus, Baboon Tested in Development: Human
Storage Buffer:	Aqueous buffered solution containing protein stabilizer and $\leq 0.09\%$ sodium azide.

Description

The RPA-T8 monoclonal antibody specifically binds to CD8 alpha (CD8 α). CD8 α is a type I transmembrane glycoprotein and a member of the immunoglobulin superfamily. CD8 α is expressed by the majority of thymocytes, by subpopulations of $\alpha\beta$ T cells and $\gamma\delta$ T cells and by some NK cells. Cell surface CD8 α is expressed either as a disulfide-linked homodimer (CD8 $\alpha\alpha$) or as a heterodimer (CD8 $\alpha\beta$) when disulfide-bonded to a CD8 beta chain (CD8 β). CD8-positive $\alpha\beta$ T cells coexpress both CD8 $\alpha\alpha$ homodimers and CD8 $\alpha\beta$ heterodimers whereas some $\gamma\delta$ T cells and NK cells express CD8 $\alpha\alpha$ homodimers. CD8 plays important roles in T cell activation and selection. The extracellular IgSF domain of CD8 α binds to a non-polymorphic determinant on HLA class I molecules ($\alpha 3$ domain) and enables CD8 to function as a co-receptor with MHC class I-restricted TCR during T cell recognition of antigen. The cytoplasmic domain of CD8 α associates with Lck, a Src family protein tyrosine kinase that is involved in intracellular signaling. The RPA-T8 and HIT8a monoclonal antibodies are not cross-blocking. This clone has been reported to react with a subset of peripheral blood lymphocytes, but not monocytes nor granulocytes, of baboon and both rhesus and cynomolgus macaque monkey. In general, a higher frequency of CD8+ and CD4+CD8+ lymphocytes are observed in non-human primates compared to normal human donors.



Profile of CD8 (RPA-T8) reactivity on human (left panel) and rhesus macaque (*macaca mulatta*, right panel) peripheral blood lymphocytes analyzed by flow cytometry.

Preparation and Storage

Store undiluted at 4°C and protected from prolonged exposure to light. Do not freeze.

The monoclonal antibody was purified from tissue culture supernatant or ascites by affinity chromatography.

The antibody was conjugated to Alexa Fluor® 700 under optimum conditions, and unreacted Alexa Fluor® 700 was removed.

Application Notes

Application

Flow cytometry	Routinely Tested
----------------	------------------

BD Biosciences

bdbiosciences.com

United States	Canada	Europe	Japan	Asia Pacific	Latin America/Caribbean
877.232.8995	866.979.9408	32.2.400.98.95	0120.8555.90	65.6861.0633	55.11.5185.9995

For country contact information, visit bdbiosciences.com/contact

Conditions: The information disclosed herein is not to be construed as a recommendation to use the above product in violation of any patents. BD Biosciences will not be held responsible for patent infringement or other violations that may occur with the use of our products. Purchase does not include or carry any right to resell or transfer this product either as a stand-alone product or as a component of another product. Any use of this product other than the permitted use without the express written authorization of Becton, Dickinson and Company is strictly prohibited.

For Research Use Only. Not for use in diagnostic or therapeutic procedures. Not for resale.

Unless otherwise noted, BD, BD Logo and all other trademarks are property of Becton, Dickinson and Company. © 2015 BD

561026 Rev. 2



Suggested Companion Products

Catalog Number	Name	Size	Clone
557882	Alexa Fluor® 700 Mouse IgG1, κ Isotype Control	0.1 mg	MOPC-21

Product Notices

1. Since applications vary, each investigator should titrate the reagent to obtain optimal results.
2. An isotype control should be used at the same concentration as the antibody of interest.
3. Caution: Sodium azide yields highly toxic hydrazoic acid under acidic conditions. Dilute azide compounds in running water before discarding to avoid accumulation of potentially explosive deposits in plumbing.
4. Alexa Fluor® 700 has an adsorption maximum of ~700nm and a peak fluorescence emission of ~720nm. Before staining cells with this reagent, please confirm that your flow cytometer is capable of exciting the fluorochrome and discriminating the resulting fluorescence.
5. Species testing during development may have been performed with a different format of the same clone. Selected applications have been tested for cross-reactivity.
6. The Alexa Fluor®, Pacific Blue™, and Cascade Blue® dye antibody conjugates in this product are sold under license from Molecular Probes, Inc. for research use only, excluding use in combination with microarrays, or as analyte specific reagents. The Alexa Fluor® dyes (except for Alexa Fluor® 430), Pacific Blue™ dye, and Cascade Blue® dye are covered by pending and issued patents.
7. Alexa Fluor® is a registered trademark of Molecular Probes, Inc., Eugene, OR.
8. For fluorochrome spectra and suitable instrument settings, please refer to our Multicolor Flow Cytometry web page at www.bdbiosciences.com/colors.
9. Please refer to www.bdbiosciences.com/pharming/protocols for technical protocols.

References

Knapp W, Dörken B, Gilks WR, et al, ed. *Leucocyte Typing IV*. New York, NY: Oxford University Press; 1989:1-1182. (Biology)

Reimann KA, Waite BC, Lee-Parritz DE, et al. Use of human leukocyte-specific monoclonal antibodies for clinically immunophenotyping lymphocytes of rhesus monkeys. *Cytometry*. 1994; 17(1):102-108. (Biology)

Schlossman SF, Boumsell L, Gilks W, et al, ed. *Leucocyte Typing V*. New York: Oxford University Press; 1995. (Clone-specific)

Schlossman SF, Boumsell L, Gilks W, et al, ed. *Leucocyte Typing V: White Cell Differentiation Antigens*. Oxford: Oxford University Press; 1995. (Clone-specific)

Sopper S, Stahl-Hennig C, Demuth M, Johnston IC, Dorries R, ter Meulen V. Lymphocyte subsets and expression of differentiation markers in blood and lymphoid organs of rhesus monkeys. *Cytometry*. 1997; 29(4):351-362. (Biology)

BD Biosciences

bdbiosciences.com

United States	Canada	Europe	Japan	Asia Pacific	Latin America/Caribbean
877.232.8995	866.979.9408	32.2.400.98.95	0120.8555.90	65.6861.0633	55.11.5185.9995

For country contact information, visit bdbiosciences.com/contact

Conditions: The information disclosed herein is not to be construed as a recommendation to use the above product in violation of any patents. BD Biosciences will not be held responsible for patent infringement or other violations that may occur with the use of our products. Purchase does not include or carry any right to resell or transfer this product either as a stand-alone product or as a component of another product. Any use of this product other than the permitted use without the express written authorization of Becton, Dickinson and Company is strictly prohibited.

For Research Use Only. Not for use in diagnostic or therapeutic procedures. Not for resale.

Unless otherwise noted, BD, BD Logo and all other trademarks are property of Becton, Dickinson and Company. © 2015 BD

561026 Rev. 2

