

## DLST (D22G7) Rabbit mAb

✓ 100 µl  
(10 western blots)

**Orders** ■ 877-616-CELL (2355)  
orders@cellsignal.com

**Support** ■ 877-678-TECH (8324)  
info@cellsignal.com

**Web** ■ www.cellsignal.com

New 05/13

**For Research Use Only. Not For Use In Diagnostic Procedures.**

**Entrez-Gene ID** #1743  
**Swiss-Prot Acc.** #P36957

**Applications**  
W  
Endogenous

**Species Cross-Reactivity\***  
H, M, R, Mk, Hm

**Molecular Wt.**  
50 kDa

**Isotype**  
Rabbit IgG\*\*

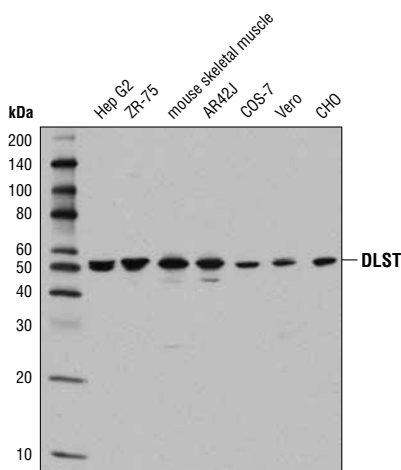
**Background:**  $\alpha$ -ketoglutarate dehydrogenase complex is a rate-regulating enzyme in the Krebs Cycle (1). Dihydrolipoamide succinyltransferase (DLST) is a key subunit in this complex (2). Reduction of DLST increases reactive oxygen species production, suggesting its role in oxidative stress (2). Research has shown that deficiency of DLST in mice is linked to increased oxidative stress in mitochondria, a process that may be involved in the pathogenesis of Alzheimer's disease (2).

**Specificity/Sensitivity:** DLST (D22G7) Rabbit mAb recognizes endogenous levels of total DLST protein.

**Source/Purification:** Monoclonal antibody is produced by immunizing animals with a synthetic peptide corresponding to residues surrounding Val404 of human DLST protein.

**Background References:**

- (1) Ohta, S. and Ohsawa, I. (2006) *J. Alzheimers Dis.* 9, 155–166.
- (2) Dumont, M. et al. (2009) *Free Radic. Biol. Med.* 47, 1019–1027.



Western blot analysis of extracts from various cell lines using DLST (D22G7) Rabbit mAb.

**Storage:** Supplied in 10 mM sodium HEPES (pH 7.5), 150 mM NaCl, 100 µg/ml BSA, 50% glycerol and less than 0.02% sodium azide. Store at -20°C. Do not aliquot the antibody.

**\*Species cross-reactivity is determined by western blot.**

**\*\*Anti-rabbit secondary antibodies must be used to detect this antibody.**

**Recommended Antibody Dilutions:**

Western Blotting 1:1000

**For product specific protocols please see the web page for this product at [www.cellsignal.com](http://www.cellsignal.com).**

**Please visit [www.cellsignal.com](http://www.cellsignal.com) for a complete listing of recommended complementary products.**

**IMPORTANT:** For western blots, incubate membrane with diluted antibody in 5% w/v BSA, 1X TBS, 0.1% Tween-20 at 4°C with gentle shaking, overnight.