

## Technical Data Sheet

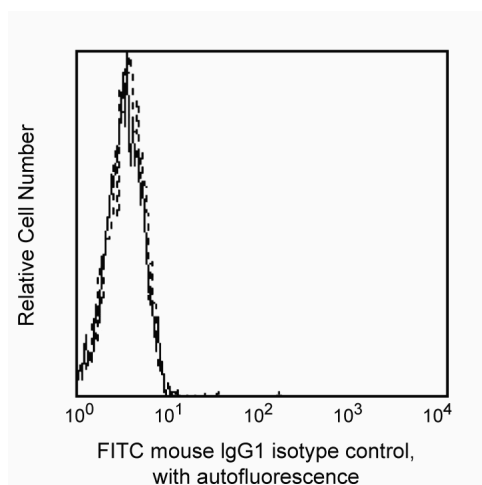
**FITC Mouse IgG1, κ Isotype Control****Product Information**

<b>Material Number:</b>	<b>556649</b>
<b>Size:</b>	50 tests
<b>Vol. per Test:</b>	20 µl
<b>Clone:</b>	MOPC-21
<b>Isotype:</b>	Mouse IgG1, κ
<b>Storage Buffer:</b>	Aqueous buffered solution containing BSA and ≤0.09% sodium azide.

**Description**

The MOPC-21 immunoglobulin is a mouse myeloma protein. The MOPC-21 immunoglobulin was selected as an isotype control following screening for low background on a variety of mouse and human tissues.

This reagent has been used as isotype control in immunophenotypic studies with baboon, rhesus, or cynomolgus peripheral blood cells.



*Profile of peripheral blood lymphocytes of rhesus macaque (macaca mulatta) analyzed by flow cytometry*

**Preparation and Storage**

Store undiluted at 4°C and protected from prolonged exposure to light. Do not freeze.

The monoclonal antibody was purified from tissue culture supernatant or ascites by affinity chromatography.

The antibody was conjugated with FITC under optimum conditions, and unreacted FITC was removed.

**Application Notes****Application**

Isotype control	Routinely Tested
Flow cytometry	Routinely Tested

**Product Notices**

1. This reagent has been pre-diluted for use at the recommended Volume per Test. We typically use  $1 \times 10^6$  cells in a 100-µl experimental sample (a test).
2. Caution: Sodium azide yields highly toxic hydrazoic acid under acidic conditions. Dilute azide compounds in running water before discarding to avoid accumulation of potentially explosive deposits in plumbing.
3. Source of all serum proteins is from USDA inspected abattoirs located in the United States.
4. Please refer to [www.bdbiosciences.com/pharmingen/protocols](http://www.bdbiosciences.com/pharmingen/protocols) for technical protocols.

**BD Biosciences**

[bdbiosciences.com](http://bdbiosciences.com)

<b>United States</b>	<b>Canada</b>	<b>Europe</b>	<b>Japan</b>	<b>Asia Pacific</b>	<b>Latin America/Caribbean</b>
877.232.8995	800.979.9408	32.53.720.550	0120.8555.90	65.6861.0633	55.11.5185.9995

For country contact information, visit [bdbiosciences.com/contact](http://bdbiosciences.com/contact)

Conditions: The information disclosed herein is not to be construed as a recommendation to use the above product in violation of any patents. BD Biosciences will not be held responsible for patent infringement or other violations that may occur with the use of our products. Purchase does not include or carry any right to resell or transfer this product either as a stand-alone product or as a component of another product. Any use of this product other than the permitted use without the express written authorization of Becton, Dickinson and Company is strictly prohibited.

For Research Use Only. Not for use in diagnostic or therapeutic procedures. Not for resale.

Unless otherwise noted, BD, BD Logo and all other trademarks are property of Becton, Dickinson and Company. © 2011 BD

