

Technical Data Sheet

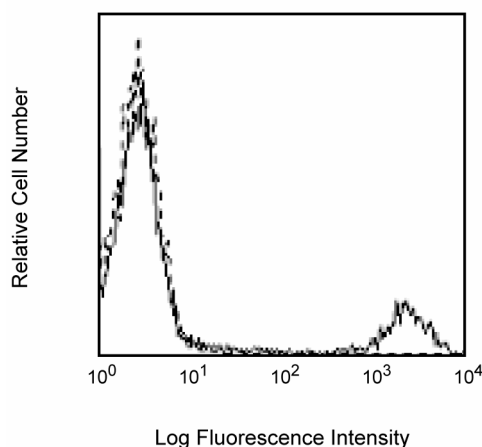
PE Mouse Anti-Human CD20

Product Information

Material Number:	556633
Size:	50 tests
Vol. per Test:	20 µl
Clone:	2H7
Isotype:	Mouse (BALB/c) IgG2b, κ
Reactivity:	Human
	QC Testing: Baboon or Rhesus or Cynomolgus
Workshop:	IV B201
Storage Buffer:	Aqueous buffered solution containing BSA and ≤0.09% sodium azide.

Description

Clone 2H7 reacts with the human form of a phosphoprotein, CD20, found on circulating peripheral blood B lymphocytes. This clone also cross-reacts with a subset of peripheral blood lymphocytes, but not monocytes nor granulocytes, of baboon and both rhesus and cynomolgus macaque monkeys. The distribution on lymphocytes is similar to that seen with normal human donor lymphocytes, namely bright staining on B lymphocytes and weak reactivity on a small subset of CD3-positive T lymphocytes.



Profile of anti-CD20 reactivity on peripheral blood lymphocytes of Rhesus macaque (Macaca mulatta) analyzed by flow cytometry.

Preparation and Storage

The monoclonal antibody was purified from tissue culture supernatant or ascites by affinity chromatography.

The antibody was conjugated with R-PE under optimum conditions, and unconjugated antibody and free PE were removed.

Store undiluted at 4°C and protected from prolonged exposure to light. Do not freeze.

Application Notes

Application

Flow cytometry	Routinely Tested
Immunohistochemistry-frozen	Tested During Development

Suggested Companion Products

Catalog Number	Name	Size	Clone
556656	PE Mouse IgG2b, κ Isotype Control	50 tests	27-35

Product Notices

1. This reagent has been pre-diluted for use at the recommended Volume per Test. We typically use 1×10^6 cells in a 100-µl experimental sample (a test).
2. Since applications vary, each investigator should titrate the reagent to obtain optimal results.

BD Biosciences

bdbiosciences.com

United States	Canada	Europe	Japan	Asia Pacific	Latin America/Caribbean
877.232.8995	888.268.5430	32.53.720.550	0120.8555.90	65.6861.0633	0800.771.7157

For country-specific contact information, visit bdbiosciences.com/how_to_order/

Conditions: The information disclosed herein is not to be construed as a recommendation to use the above product in violation of any patents. BD Biosciences will not be held responsible for patent infringement or other violations that may occur with the use of our products. Purchase does not include or carry any right to resell or transfer this product either as a stand-alone product or as a component of another product. Any use of this product other than the permitted use without the express written authorization of Becton Dickinson and Company is strictly prohibited.

For Research Use Only. Not for use in diagnostic or therapeutic procedures. Not for resale.

BD, BD Logo and all other trademarks are the property of Becton, Dickinson and Company. ©2011 BD



3. Please refer to www.bdbiosciences.com/pharming/en/protocols for technical protocols.
4. Caution: Sodium azide yields highly toxic hydrazoic acid under acidic conditions. Dilute azide compounds in running water before discarding to avoid accumulation of potentially explosive deposits in plumbing.
5. Source of all serum proteins is from USDA inspected abattoirs located in the United States.

References

Hultin LE, Hausner MA, Hultin PM, Giorgi JV. CD20 (pan-B cell) antigen is expressed at a low level on a subpopulation of human T lymphocytes. *Cytometry*. 1993; 14(2):193-204. (Biology)

Knapp W, Dorken B, Rieber EP, et al, ed. *Leucocyte Typing IV*. New York: Oxford University Press; 1989:1-1208. (Clone-specific)

Schlossman S, Boumell L, et al, ed. *Leucocyte Typing V*. New York: Oxford University Press; 1995. (Biology)