

Protor-2 (D19A5) Rabbit mAb

✓ 100 µl
(10 western blots)

Orders ■ 877-616-CELL (2355)
orders@cellsignal.com

Support ■ 877-678-TECH (8324)
info@cellsignal.com

Web ■ www.cellsignal.com

New 08/12

For Research Use Only. Not For Use In Diagnostic Procedures.

Entrez-Gene ID #79899
Swiss-Prot Acc. #Q6MZQ0

Applications
W
Endogenous

Species Cross-Reactivity*
H, Mk

Molecular Wt.
42 kDa

Isotype
Rabbit IgG**

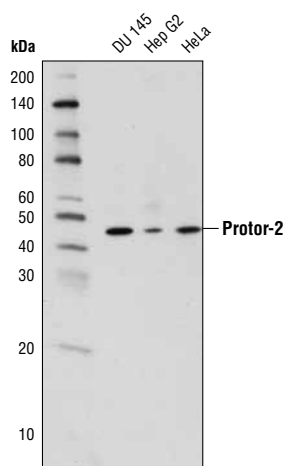
Background: Protein observed with rictor-1 (protor-1) and protein observed with rictor-2 (protor-2) both interact with rictor and were identified as components of mTORC2 (1). The absence of protor-1 or protor-2 does not affect the assembly of other mTORC2 components into an active complex (2). Protor-1 was shown to be essential for the activation of SGK1 mediated by mTORC2 (2). Protor-2 plays a role in tristetraprolin-mediated mRNA turnover (3).

Specificity/Sensitivity: Protor-2 (D19A5) Rabbit mAb recognizes endogenous levels of total protor-2 protein.

Source/Purification: Monoclonal antibody is produced by immunizing animals with a synthetic peptide corresponding to residues near the carboxy terminus of human protor-2 protein.

Background References:

- (1) Pearce, L.R. et al. (2007) *Biochem J* 405, 513-22.
- (2) Pearce, L.R. et al. (2011) *Biochem J* 436, 169-79.
- (3) Holmes, B. et al. (2012) *Cell Signal* 24, 309-15.



Western blot analysis of extracts from DU 145, Hep G2, and HeLa cells using Protor-2 (D19A5) Rabbit mAb.

Storage: Supplied in 10 mM sodium HEPES (pH 7.5), 150 mM NaCl, 100 µg/ml BSA, 50% glycerol and less than 0.02% sodium azide. Store at -20°C. Do not aliquot the antibody.

***Species cross-reactivity is determined by western blot.**

****Anti-rabbit secondary antibodies must be used to detect this antibody.**

Recommended Antibody Dilutions:

Western blotting 1:1000

For product specific protocols please see the web page for this product at www.cellsignal.com.

Please visit www.cellsignal.com for a complete listing of recommended complementary products.

IMPORTANT: For western blots, incubate membrane with diluted antibody in 5% w/v BSA, 1X TBS, 0.1% Tween-20 at 4°C with gentle shaking, overnight.

Applications Key: W—Western IP—Immunoprecipitation IHC—Immunohistochemistry ChIP—Chromatin Immunoprecipitation IF—Immunofluorescence F—Flow cytometry E-P—ELISA-Peptide
Species Cross-Reactivity Key: H—human M—mouse R—rat Hm—hamster Mk—monkey Mi—mink C—chicken Dm—D. melanogaster X—Xenopus Z—zebrafish B—bovine
 Dg—dog Pg—pig Sc—S. cerevisiae Ce—C. elegans Hr—horse All—all species expected Species enclosed in parentheses are predicted to react based on 100% homology.