

E2A (D2B1) Rabbit mAb

✓ 100 µl
(10 western blots)



Orders ■ 877-616-CELL (2355)
orders@cellsignal.com
Support ■ 877-678-TECH (8324)
info@cellsignal.com
Web ■ www.cellsignal.com

rev. 01/10/13

For Research Use Only. Not For Use In Diagnostic Procedures.

Entrez-Gene ID #6929
Swiss-Prot Acc. #P15923

Applications W, IP Endogenous	Species Cross-Reactivity* H, Mk	Molecular Wt. 75 kDa	Isotype Rabbit IgG**
-------------------------------------	------------------------------------	-------------------------	-------------------------

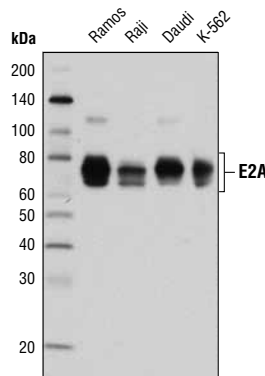
Background: E2A is a member of the E-protein family of transcription factors, a subclass of basic helix-loop-helix (bHLH) proteins that bind specifically to E-box consensus sequences (1,2). Alternative splicing generates two E2A isoforms (E47 and E12) that are actively involved in B cell lineage commitment, B cell maturation, IgK V-J rearrangement, peripheral B cell development, and tumor suppression (3). E2A acts in *cis* during G1 to promote immunoglobulin gene diversification (4). Research studies have shown that chromosomal translocations involving the E2A gene result in the expression of multiple fusion proteins and are associated with many cases of pediatric acute lymphoblastic leukemia (5).

Specificity/Sensitivity: E2A (D2B1) Rabbit mAb recognizes endogenous levels of total E2A protein.

Source/Purification: Monoclonal antibody is produced by immunizing animals with a synthetic peptide corresponding to residues surrounding Gly112 of human E2A protein.

Background References:

- (1) Murre, C. (2005) *Nat Immunol* 6, 1079-86.
- (2) Bain, G. et al. (2001) *Nat Immunol* 2, 165-71.
- (3) Schwartz, R. et al. (2006) *Proc Natl Acad Sci USA* 103, 9976-81.
- (4) Yabuki, M. et al. (2009) *J Immunol* 182, 408-15.
- (5) LeBrun, D.P. (2003) *Front Biosci* 8, s206-22.



Western blot analysis of extracts from various cell lines using E2A (D2B1) Rabbit mAb.

Storage: Supplied in 10 mM sodium HEPES (pH 7.5), 150 mM NaCl, 100 µg/ml BSA, 50% glycerol and less than 0.02% sodium azide. Store at -20°C. Do not aliquot the antibody.

***Species cross-reactivity is determined by western blot.**

****Anti-rabbit secondary antibodies must be used to detect this antibody.**

Recommended Antibody Dilutions:

Western blotting	1:1000
Immunoprecipitation	1:50

For product specific protocols please see the web page for this product at www.cellsignal.com.

Please visit www.cellsignal.com for a complete listing of recommended complementary products.

IMPORTANT: For western blots, incubate membrane with diluted antibody in 5% w/v BSA, 1X TBS, 0.1% Tween-20 at 4°C with gentle shaking, overnight.

Applications Key: W—Western IP—Immunoprecipitation IHC—Immunohistochemistry ChIP—Chromatin Immunoprecipitation IF—Immunofluorescence F—Flow cytometry E-P—ELISA-Peptide
Species Cross-Reactivity Key: H—human M—mouse R—rat Hm—hamster Mk—monkey Mi—mink C—chicken Dm—D. melanogaster X—Xenopus Z—zebrafish B—bovine
Dg—dog Pg—pig Sc—S. cerevisiae Ce—C. elegans Hr—horse All—all species expected Species enclosed in parentheses are predicted to react based on 100% homology.