

IFIT1 Antibody

✓ 100 µl
(10 western blots)

Orders ■ 877-616-CELL (2355)
orders@cellsignal.com
Support ■ 877-678-TECH (8324)
info@cellsignal.com
Web ■ www.cellsignal.com

New 01/13

For Research Use Only. Not For Use In Diagnostic Procedures.

Entrez-Gene ID #3434
Swiss-Prot Acc. #P09914

Applications W, IP Endogenous	Species Cross-Reactivity* H	Molecular Wt. 56 kDa	Source Rabbit**
-------------------------------------	--------------------------------	-------------------------	--------------------

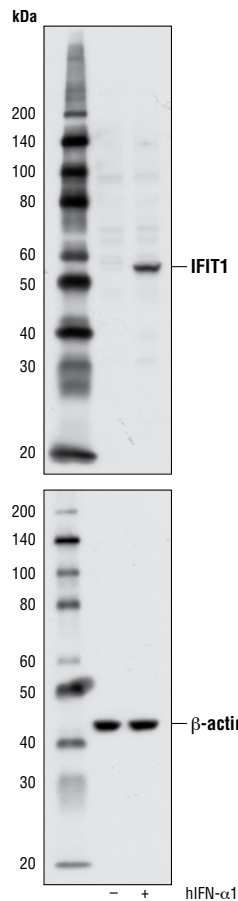
Background: IFIT1 (interferon-induced protein with tetratricopeptide repeats 1) belongs to the IFIT family of proteins, which consists of four members in humans (IFIT1, IFIT2, IFIT3, and IFIT5) and three members in mice (IFIT1, IFIT2, and IFIT3) (1). IFIT1 expression is induced by Type I Interferons resulting from viral infection (2). IFIT1 is an antiviral protein that directly binds viral RNA that has a 5' triphosphate group (PPP-RNA) (2). In humans, the viral PPP-RNA bound IFIT1 forms a complex with IFIT2 and IFIT3 to sequester the viral PPP-RNA and prevent replication (2). IFIT1 has also been shown to inhibit translation by binding to the eukaryotic initiation factor-3 (eIF-3) (3).

Specificity/Sensitivity: IFIT1 Antibody recognizes endogenous levels of total IFIT1 protein.

Source/Purification: Polyclonal antibodies are produced by immunizing animals with a synthetic peptide corresponding to residues surrounding Ala194 of human IFIT1 protein. Antibodies are purified by protein A and peptide affinity chromatography.

Background References:

- (1) Ablasser, A. and Hornung, V. (2011) *Nat Immunol* 12, 588-90.
- (2) Pichlmair, A. et al. (2011) *Nat Immunol* 12, 624-30.
- (3) Guo, J. et al. (2000) *EMBO J* 19, 6891-9.



Western blot analysis of extracts from HeLa cells, untreated (-) or treated with Human Interferon-α1 (hIFN-α1) #8927 (10 ng/ml, 16 hr; +), using IFIT1 Antibody (upper) and β-Actin (D6A8) Rabbit mAb #8457 (lower).

Storage: Supplied in 10 mM sodium HEPES (pH 7.5), 150 mM NaCl, 100 µg/ml BSA and 50% glycerol. Store at -20°C. Do not aliquot the antibody.

*Species cross-reactivity is determined by western blot.

**Anti-rabbit secondary antibodies must be used to detect this antibody.

Recommended Antibody Dilutions:

Western Blotting	1:1000
Immunoprecipitation	1:50

For product specific protocols please see the web page for this product at www.cellsignal.com.

Please visit www.cellsignal.com for a complete listing of recommended complementary products.

IMPORTANT: For western blots, incubate membrane with diluted antibody in 5% w/v nonfat dry milk, 1X TBS, 0.1% Tween-20 at 4°C with gentle shaking, overnight.