

## DESCRIPTION

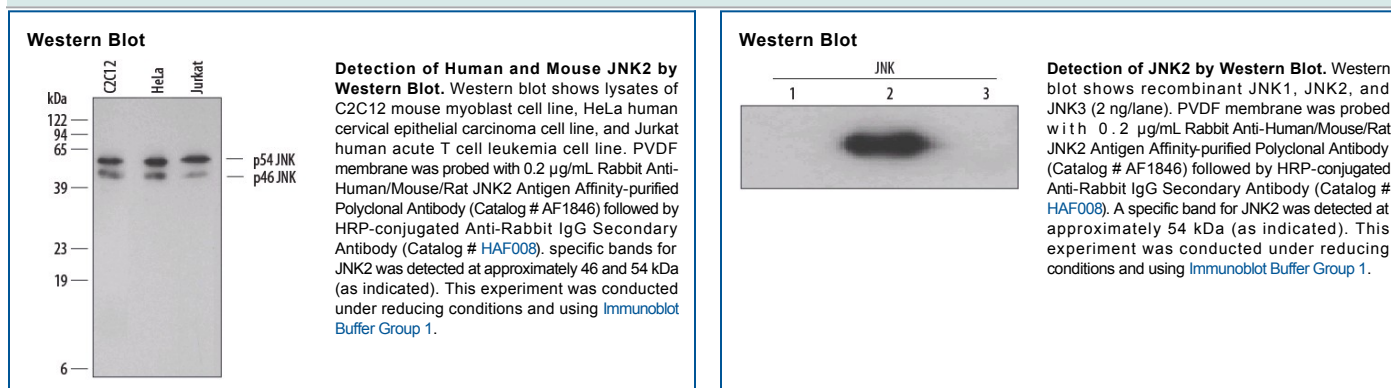
|                           |   |
|---------------------------|---|
| <b>Species Reactivity</b> | Human/Mouse/Rat   |
| <b>Specificity</b>        | Detects human, mouse, and rat JNK2 in Western blots. Recognizes p54 JNK (isoforms 1 and/or 4, both 424 aa) and p46 JNK (isoforms 2 and/or 3, both 382 aa) in Western blots. Because the peptide immunogen corresponds to a region of JNK2 with low homology to other JNKs, the antibody does not detect recombinant JNK1 or JNK3. |
| <b>Source</b>             | Polyclonal Rabbit IgG   |
| <b>Purification</b>       | Antigen Affinity-purified   |
| <b>Immunogen</b>          | Human, Mouse, and Rat JNK2 synthetic peptide<br>PGIKFEELFPDWIFPSESRD  |
| <b>Formulation</b>        | Lyophilized from a 0.2 µm filtered solution in PBS with Trehalose. See Certificate of Analysis for details.   |

## APPLICATIONS

**Please Note:** Optimal dilutions should be determined by each laboratory for each application. [General Protocols](#) are available in the Technical Information section on our website.

|                     | <b>Recommended Concentration</b> | <b>Sample</b> |
|---------------------|----------------------------------|---------------|
| <b>Western Blot</b> | 0.2 µg/mL                        | See Below     |

## DATA



## PREPARATION AND STORAGE

|                                |   |
|--------------------------------|---|
| <b>Reconstitution</b>          | Reconstitute at 0.2 mg/mL in sterile PBS.   |
| <b>Shipping</b>                | The product is shipped at ambient temperature. Upon receipt, store it immediately at the temperature recommended below.   |
| <b>Stability &amp; Storage</b> | <p><b>Use a manual defrost freezer and avoid repeated freeze-thaw cycles.</b></p> <ul style="list-style-type: none"> <li>● 12 months from date of receipt, -20 to -70 °C as supplied.</li> <li>● 1 month, 2 to 8 °C under sterile conditions after reconstitution.</li> <li>● 6 months, -20 to -70 °C under sterile conditions after reconstitution.</li> </ul> |