

## DESCRIPTION

<b>Species Reactivity</b>	Human
<b>Specificity</b>	Detects human GATA-6 in direct ELISAs. In direct ELISAs and Western blots, this antibody shows approximately 5% cross-reactivity with rhGATA-1 and less than 2% cross-reactivity with rhGATA-5.
<b>Source</b>	Polyclonal Goat IgG
<b>Purification</b>	Antigen Affinity-purified
<b>Immunogen</b>	<i>E. coli</i> -derived recombinant human GATA-6 Met1-Thr449 Accession # Q92908
<b>Formulation</b>	Lyophilized from a 0.2 µm filtered solution in PBS with Trehalose. See Certificate of Analysis for details.

## APPLICATIONS

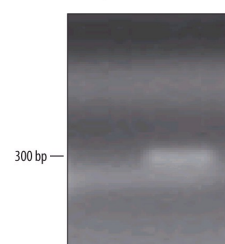
**Please Note:** Optimal dilutions should be determined by each laboratory for each application. [General Protocols](#) are available in the Technical Information section on our website.

	<b>Recommended Concentration</b>	<b>Sample</b>
<b>Western Blot</b>	0.1 µg/mL	Recombinant Human GATA-6
<b>Chromatin Immunoprecipitation (ChIP)</b>	5 µg/5 x 10 <sup>6</sup> cells	See Below
<b>Immunocytochemistry</b>	5-15 µg/mL	See Below
<b>Immunohistochemistry</b>	5-15 µg/mL	See Below

## DATA

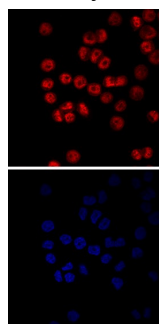
### Chromatin Immunoprecipitation (ChIP)

Kato III		
-	+	Anti-GATA-6
+	-	Goat IgG



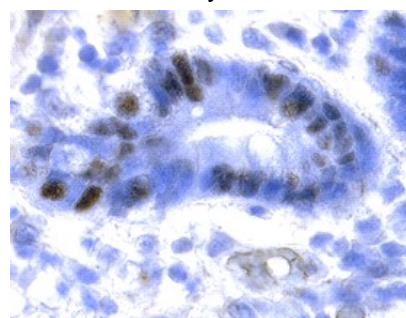
**Detection of GATA-6-regulated Genes by Chromatin Immunoprecipitation.** KATO-III human gastric carcinoma cell line was fixed using formaldehyde, resuspended in lysis buffer, and sonicated to shear chromatin. GATA-6/DNA complexes were immunoprecipitated using 5 µg Goat Anti-Human GATA-6 Antigen Affinity-purified Polyclonal Antibody (Catalog # AF1700) or control antibody (Catalog # AB-108-C) for 15 minutes in an ultrasonic bath, followed by Biotinylated Anti-Goat IgG Secondary Antibody (Catalog # BAF109). Immunocomplexes were captured using 50 µL of MagCelect Streptavidin Ferrofluid (Catalog # MAG999) and DNA was purified using chelating resin solution. The *mucin4* promoter was detected by standard PCR.

### Immunocytochemistry



**GATA-6 in KATO-III Human Cell Line.** GATA-6 was detected in immersion fixed KATO-III human gastric carcinoma cell line using 10 µg/mL Goat Anti-Human GATA-6 Antigen Affinity-purified Polyclonal Antibody (Catalog # AF1700) for 3 hours at room temperature. Cells were stained with the NorthernLights™ 557-conjugated Anti-Goat IgG Secondary Antibody (red, upper panel; Catalog # NL001) and counterstained with DAPI (blue, lower panel). View our protocol for [Fluorescent ICC Staining of Cells on Coverslips](#).

### Immunohistochemistry



**GATA-6 in Human Intestine.** GATA-6 was detected in immersion fixed paraffin-embedded sections of human intestine using Goat Anti-Human GATA-6 Antigen Affinity-purified Polyclonal Antibody (Catalog # AF1700) at 5 µg/mL overnight at 4 °C. Tissue was stained using the Anti-Goat HRP-DAB Cell & Tissue Staining Kit (brown; Catalog # CTS008) and counterstained with hematoxylin (blue). View our protocol for [Chromogenic IHC Staining of Paraffin-embedded Tissue Sections](#).

## PREPARATION AND STORAGE

<b>Reconstitution</b>	Reconstitute at 0.2 mg/mL in sterile PBS.
<b>Shipping</b>	The product is shipped at ambient temperature. Upon receipt, store it immediately at the temperature recommended below.
<b>Stability &amp; Storage</b>	<p><b>Use a manual defrost freezer and avoid repeated freeze-thaw cycles.</b></p> <ul style="list-style-type: none"> <li>12 months from date of receipt, -20 to -70 °C as supplied.</li> <li>1 month, 2 to 8 °C under sterile conditions after reconstitution.</li> <li>6 months, -20 to -70 °C under sterile conditions after reconstitution.</li> </ul>

**BACKGROUND**

GATA-6 (also named GATA-GT1) is a zinc finger transcription activating protein that binds to a T/A-G-A-T-A-G/A DNA sequence motif in mesodermally and endodermally-derived tissue. There are two GATA-6 isoforms that arise from alternate start sites: a short form of 449 amino acids (aa), and a long form of 595 aa. The short form of human GATA-6 is 93%, 92% and 88% aa identical to GATA-6 in porcine, rat and mouse, respectively.