

## DESCRIPTION

<b>Species Reactivity</b>	Human
<b>Specificity</b>	Detects human $\alpha$ -Fetoprotein in direct ELISAs and Western blots.
<b>Source</b>	Polyclonal Chicken IgY
<b>Purification</b>	Antigen Affinity-purified from egg yolks
<b>Immunogen</b>	Human umbilical cord serum-derived $\alpha$ -Fetoprotein
<b>Formulation</b>	Lyophilized from a 0.2 $\mu$ m filtered solution in PBS with Trehalose. See Certificate of Analysis for details.

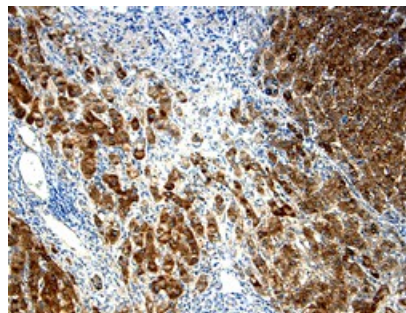
## APPLICATIONS

**Please Note:** Optimal dilutions should be determined by each laboratory for each application. [General Protocols](#) are available in the Technical Information section on our website.

	<b>Recommended Concentration</b>	<b>Sample</b>
<b>Western Blot</b>	0.1 $\mu$ g/mL	Human $\alpha$ -Fetoprotein/AFP
<b>Immunohistochemistry</b>	5-15 $\mu$ g/mL	See Below

## DATA

### Immunohistochemistry



**$\alpha$ -Fetoprotein/AFP in Human Liver cancer**  $\alpha$ -Fetoprotein/AFP was detected in immersion fixed paraffin-embedded sections of human liver cancer using 15  $\mu$ g / m L H u m a n  $\alpha$ -Fetoprotein/AFP Antigen Affinity-purified Polyclonal Antibody (Catalog # AF1369) overnight at 4 °C. Tissue was stained (brown) and counterstained with hematoxylin (blue). View our protocol for [Chromogenic IHC Staining of Paraffin-embedded Tissue Sections](#).

## PREPARATION AND STORAGE

<b>Reconstitution</b>	Reconstitute at 0.2 mg/mL in sterile PBS.
<b>Shipping</b>	The product is shipped at ambient temperature. Upon receipt, store it immediately at the temperature recommended below.
<b>Stability &amp; Storage</b>	<p><b>Use a manual defrost freezer and avoid repeated freeze-thaw cycles.</b></p> <ul style="list-style-type: none"> <li>● 12 months from date of receipt, -20 to -70 °C as supplied.</li> <li>● 1 month from date of receipt, 2 to 8 °C, reconstituted.</li> <li>● 6 months from date of receipt, -20 to -70 °C, reconstituted.</li> </ul>