

DESCRIPTION

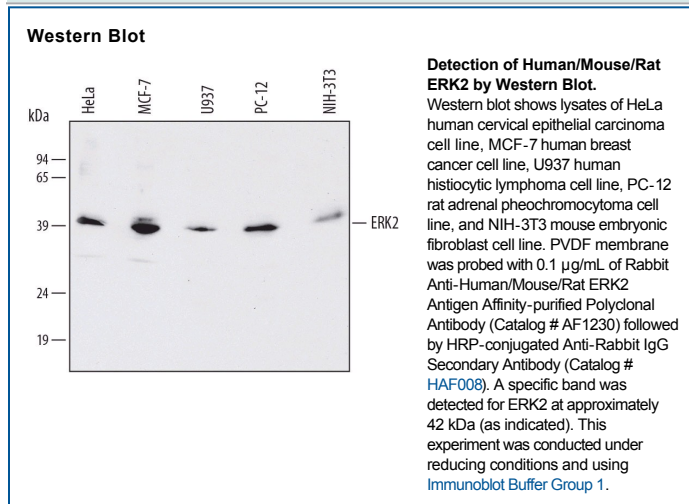
Species Reactivity	Human/Mouse/Rat
Specificity	Detects human, mouse, and rat ERK2. Also recognizes ERK1 in some cell types at much lower affinity.
Source	Polyclonal Rabbit IgG
Purification	Antigen and protein A Affinity-purified
Immunogen	<i>E. coli</i> -derived recombinant human ERK2 Met1-Ser360 Accession # P28482
Formulation	Lyophilized from a 0.2 µm filtered solution in PBS with Trehalose. See Certificate of Analysis for details.

APPLICATIONS

Please Note: Optimal dilutions should be determined by each laboratory for each application. [General Protocols](#) are available in the Technical Information section on our website.

	Recommended Concentration	Sample
Western Blot	0.1 µg/mL	See Below
Immunohistochemistry	5-15 µg/mL	Immersion fixed frozen sections of mouse embryo (E13-15) and perfusion fixed frozen sections of rat brain

DATA



PREPARATION AND STORAGE

Reconstitution	Reconstitute at 0.2 mg/mL in sterile PBS.
Shipping	The product is shipped at ambient temperature. Upon receipt, store it immediately at the temperature recommended below.
Stability & Storage	<p>Use a manual defrost freezer and avoid repeated freeze-thaw cycles.</p> <ul style="list-style-type: none"> ● 12 months from date of receipt, -20 to -70 °C as supplied. ● 1 month, 2 to 8 °C under sterile conditions after reconstitution. ● 6 months, -20 to -70 °C under sterile conditions after reconstitution.