

Product Data Sheet

Pacific Blue™ anti-human IL-2

Catalog # / Size: 500324 / 100 µg

Clone: MQ1-17H12

Isotype: Rat IgG2a, κ

Immunogen: *E. coli* - expressed recombinant human IL-2

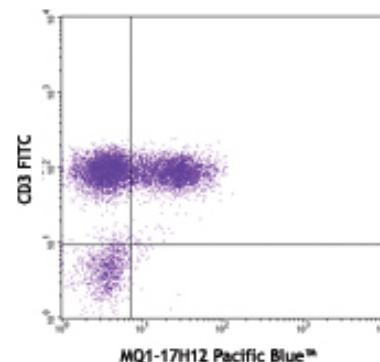
Reactivity: Human, **Cross-Reactivity:** Chimpanzee, Baboon, Cynomolgus, Rhesus, Sooty Mangabey

Preparation: The antibody was purified by affinity chromatography, and conjugated with Pacific Blue™ under optimal conditions. The solution is free of unconjugated Pacific Blue™.

Formulation: Phosphate-buffered solution, pH 7.2, containing 0.09% sodium azide.

Concentration: 0.5 mg/ml

Storage: The antibody solution should be stored undiluted at 4°C and protected from prolonged exposure to light. **Do not freeze.**



PMA+ionomycin-stimulated (5 hours) human PBMCs surface stained with CD3 FITC and intracellular stained with MQ1-17H12 Pacific Blue™

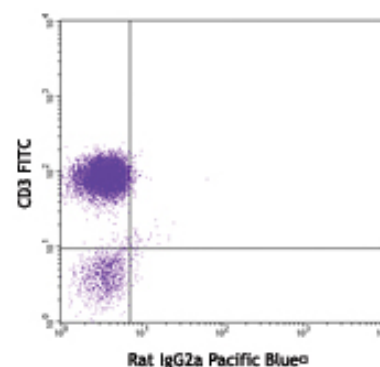
Applications:

Applications: ICFC - Quality tested

Recommended Usage: Each lot of this antibody is quality control tested by intracellular immunofluorescent staining with flow cytometric analysis. For immunofluorescent staining, the suggested use of this reagent is ≤ 1.0 µg per 10⁶ cells in 100 µl volume or 100 µl of whole blood. It is recommended that the reagent be titrated for optimal performance for each application.

* Pacific Blue™ has a maximum emission of 455 nm when it is excited at 405 nm. Prior to using Pacific Blue™ conjugate for flow cytometric analysis, please verify your flow cytometer's capability of exciting and detecting the fluorochrome.

** Pacific Blue™ is a registered trademark of Molecular Probes, Inc. Pacific Blue™ dye antibody conjugates are sold under license from Molecular Probes, Inc. for research use only, except for use in combination with microarrays and high content screening, and are covered by pending and issued patents.



PMA+ionomycin-stimulated (5 hours) human PBMCs surface stained with CD3 FITC and intracellular stained with rat IgG2a Pacific Blue™ isotype control

Application Notes: **ELISA or ELISPOT Capture^{2,3}:** The purified MQ1-17H12 antibody is useful as the capture antibody in a sandwich ELISA or ELISPOT assay, when used in conjunction with the biotinylated Poly5176 antibody (Cat. No. 517601) as the detecting antibody. The LEAF™ purified antibody is suggested for ELISPOT capture. For ELISPOT capture applications, a concentration range of 4-8 µg/ml is recommended.

Additional reported applications (for the relevant formats) include:

immunoprecipitation², immunohistochemical staining of paraformaldehyde-fixed, saponin-treated frozen tissue sections^{1,4-6,8}, and immunocytochemistry.

Note: For testing human IL-2 in serum or plasma, BioLegend's ELISA Max™ Sets (Cat. No. 431801 to 431806) are specially developed and recommended.

Application References:

1. Andersson J, *et al.* 1994. *Immunology* 83:16. (IHC)
2. Abrams J, *et al.* 1992. *Immunol. Rev.* 127:5. (IP)
3. Abrams JS. 1995. *Curr. Prot. Immunol.* Unit 6.20.
4. Fernandez V, *et al.* 1994. *Eur. J. Immunol.* 24:1808. (IHC)
5. Skansen-Saphir U, *et al.* 1994. *Eur. J. Immunol.* 24:916. (IHC)
6. Andersson U, *et al.* *Detection and Quantification of Gene Expression*. New York:Springer-Verlag. (IHC)
7. Prussin C, *et al.* 1995. *J. Immunol. Methods.* 188:117.
8. Raqib R, *et al.* 2002. *Infect. Immun.* 70:3199. (IHC)
9. Dzhalalov I, *et al.* 2007. *J. Immunol.* 178:2113. PubMed
10. Colleton BA, *et al.* 2009. *J Virol.* 83:6288. PubMed
11. Yoshino N, *et al.* 2000. *Exp. Anim. (Tokyo)* 49:97. (FC)
12. Rout N, *et al.* 2010. *PLoS One* 5:e9787. (FC)

Description: IL-2 is a potent lymphoid cell growth factor which exerts its biological activity primarily on T cells, promoting



For research use only. Not for diagnostic use. Not for resale. BioLegend will not be held responsible for patent infringement or other violations that may occur with the use of our products.



*These products may be covered by one or more Limited Use Label Licenses (see the BioLegend Catalog or our website, www.biolegend.com/ordering#license). BioLegend products may not be transferred to third parties, resold, modified for resale, or used to manufacture commercial products, reverse engineer functionally similar materials, or to provide a service to third parties without written approval of BioLegend. By use of these products you accept the terms and conditions of all applicable Limited Use Label Licenses. Unless otherwise indicated, these products are for research use only and are not intended for human or animal diagnostic, therapeutic or commercial use.

proliferation and maturation. Additionally, IL-2 has been found to stimulate growth and differentiation of B cells, NK cells, LAK cells, monocytes, and oligodendrocytes.

Antigen References: 1. Fitzgerald K, *et al.* Eds. 2001. The Cytokine FactsBook. Academic Press, San Diego.
2. Taniguchi T, *et al.* 1993. *Cell* 73:5.
3. Nistico G. 1993. *Prog. Neurobiol.* 40:463.
4. Waldmann T, *et al.* 1993. *Ann. NY Acad. Sci.* 685:603.

Related Products:	Product	Clone	Application
	Pacific Blue™ Rat IgG2a, κ Isotype Ctrl	RTK2758	FC, ICFC
	Cell Staining Buffer		FC, ICC, ICFC
	RBC Lysis Buffer (10X)		FC, ICFC



For research use only. Not for diagnostic use. Not for resale. BioLegend will not be held responsible for patent infringement or other violations that may occur with the use of our products.



*These products may be covered by one or more Limited Use Label Licenses (see the BioLegend Catalog or our website, www.biolegend.com/ordering#license). BioLegend products may not be transferred to third parties, resold, modified for resale, or used to manufacture commercial products, reverse engineer functionally similar materials, or to provide a service to third parties without written approval of BioLegend. By use of these products you accept the terms and conditions of all applicable Limited Use Label Licenses. Unless otherwise indicated, these products are for research use only and are not intended for human or animal diagnostic, therapeutic or commercial use.

BioLegend Inc., 9727 Pacific Heights Blvd, San Diego, CA 92121 www.biolegend.com
Toll-Free Phone: 1-877-Bio-Legend (246-5343) Phone: (858) 768-5800 Fax: (877) 455-9587