

Product Data Sheet

PE anti-human IL-13

Catalog # / Size: 501903 / 25 tests

Clone: JES10-5A2

Isotype: Rat IgG1, κ

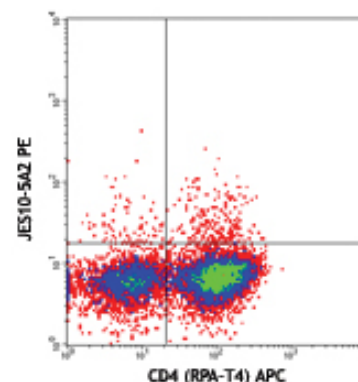
Immunogen: COS-expressed, recombinant human IL-13

Reactivity: Human

Preparation: The antibody was purified by affinity chromatography, and conjugated with PE under optimal conditions. The solution is free of unconjugated PE and unconjugated antibody.

Formulation: μ g format: Phosphate-buffered solution, pH 7.2, containing 0.09% sodium azide.
Test format: Phosphate-buffered solution, pH 7.2, containing 0.09% sodium azide, 0.2% (w/v) BSA (USA origin).

Storage: The antibody solution should be stored undiluted at 4°C and protected from prolonged exposure to light. **Do not freeze.**



PMA+ionomycin-stimulated T lymphocytes intracellularly stained with JES10-5A2 PE and CD4 (RPA-T4) APC

Applications:

Applications: ICFC - Quality tested

Recommended Usage: Each lot of this antibody is quality control tested by intracellular immunofluorescent staining with flow cytometric analysis. **Test size products are transitioning from 20 μ l to 5 μ l per test.** Please check your vial or your CoA to find the suggested use of this reagent per million cells in 100 μ l staining volume or per 100 μ l of whole blood. It is recommended that the reagent be titrated for optimal performance for each application. Read more at www.biolegend.com/testsize regarding the test size change.

Application Notes: **ELISA or ELISPOT Capture^{1,2}:** The purified JES10-5A2 antibody is useful as the capture antibody in a sandwich ELISA or ELISPOT assay, when used in conjunction with the biotinylated Poly5020 antibody (Cat. No. 502001) as the detecting antibody. The LEAF™ purified antibody is suggested for ELISPOT capture.
Flow Cytometry^{3,7}: The fluorochrome-labeled JES10-5A2 antibody is useful for intracellular immunofluorescent staining and flow cytometric analysis to identify IL-13-producing cells within mixed cell populations. For intracellular cytokine staining protocol, please visit www.biolegend.com and click on the support section.
Neutralization¹: The LEAF™ purified antibody (Endotoxin <0.1 EU/ μ g, Azide-Free, 0.2 μ m filtered) is recommended for neutralization of human IL-13 bioactivity (Cat. No. 501910).
Additional reported applications (for the relevant formats) include: Western blotting, immunohistochemical staining^{4-6,8} of paraformaldehyde-fixed, saponin-treated frozen tissue sections, and immunocytochemistry.

Application References:

1. McKenzie, A., et al. 1994. *Curr. Prot. Immunol.* John Wiley & Sons. New York. Section 6.18.
2. Abrams, J. 1995. *Curr. Prot. Immunol.* John Wiley and Sons, New York. Unit 6.20.
3. Schaefer, P., et al. 2000. *J. Exp. Med.* 192:1553.
4. Andersson, J., et al. 1994. *Immunology* 83:16.
5. Skansen-Saphir, U., et al. 1994. *Eur. J. Immunol.* 24:916.
6. Andersson, U., et al. 1999. *Detection and quantification of gene expression.* New York:Springer-Verlag.
7. Gelfand, E. W., et al. 2006. *J. Allerg. and Clin. Immunol.* 117:577.
8. Knorr, C., et al. 1999. *Am. J. Pathol.* 155:2019.

Description: IL-13 is an immunoregulatory cytokine produced primarily by activated Th2 lymphocytes. IL-13 shares 30% amino acid sequence homology with IL-4 and demonstrates similar biological activities. The biological activities of IL-13 include: suppression of macrophage cytotoxic activity, upregulation of IL-1RA expression, and suppression of proinflammatory cytokine secretion. The JES10-5A2 antibody reacts with human interleukin-13 (IL-13). The JES10-5A2 antibody can neutralize the bioactivity of natural or recombinant IL-13.

Antigen References:

1. Fitzgerald, K., et al. Eds. 2001. *The Cytokine FactsBook.* Academic Press, San Diego.
2. Hilton, D., et al. 1996. *P. Natl. Acad. Sci. USA* 93:497.
3. Obiri, N., et al. 1995. *J. Biol. Chem.* 270:8797.
4. Ochensberger, B., et al. 1996. *Blood* 88:3028.

Related Products:

Product
Cell Staining Buffer
Fixation Buffer
Permeabilization Wash Buffer (10X)
RBC Lysis Buffer (10X)
Brefeldin A Solution (1,000X)
Monensin Solution (1,000X)

Clone

Application

FC, ICC, ICFC
ICC, ICFC
ICC, ICFC, IHC
FC, ICFC
ICFC
ICFC



For research use only. Not for diagnostic use. Not for resale. BioLegend will not be held responsible for patent infringement or other violations that may occur with the use of our products.



*These products may be covered by one or more Limited Use Label Licenses (see the BioLegend Catalog or our website, www.biolegend.com/ordering#license). BioLegend products may not be transferred to third parties, resold, modified for resale, or used to manufacture commercial products, reverse engineer functionally similar materials, or to provide a service to third parties without written approval of BioLegend. By use of these products you accept the terms and conditions of all applicable Limited Use Label Licenses. Unless otherwise indicated, these products are for research use only and are not intended for human or animal diagnostic, therapeutic or commercial use.

PE Rat IgG1, κ Isotype Ctrl

RTK2071

FC, ICFC



For research use only. Not for diagnostic use. Not for resale. BioLegend will not be held responsible for patent infringement or other violations that may occur with the use of our products.



*These products may be covered by one or more Limited Use Label Licenses (see the BioLegend Catalog or our website, www.biolegend.com/ordering#license). BioLegend products may not be transferred to third parties, resold, modified for resale, or used to manufacture commercial products, reverse engineer functionally similar materials, or to provide a service to third parties without written approval of BioLegend. By use of these products you accept the terms and conditions of all applicable Limited Use Label Licenses. Unless otherwise indicated, these products are for research use only and are not intended for human or animal diagnostic, therapeutic or commercial use.

BioLegend Inc., 9727 Pacific Heights Blvd, San Diego, CA 92121 www.biolegend.com
Toll-Free Phone: 1-877-Bio-Legend (246-5343) Phone: (858) 768-5800 Fax: (877) 455-9587