

Product Data Sheet

APC anti-human IL-12/IL-23 p40 (monomer, dimer, heterodimer)

Catalog # / Size: 501809 / 25 tests

Clone: C11.5

Isotype: Mouse IgG1, κ

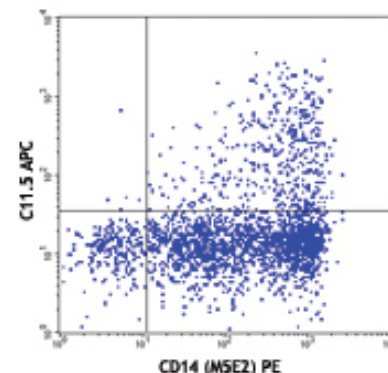
Immunogen: CHO-expressed, recombinant human IL-12 p70 heterodimer

Reactivity: Human, IL-12/IL-23 p40 subunit (monomer, homodimer and heterodimer IL-12 p35/p40 or IL-23 p19/p40)

Preparation: The antibody was purified by affinity chromatography, and conjugated with APC under optimal conditions. The solution is free of unconjugated APC and unconjugated antibody.

Formulation: μ g format: Phosphate-buffered solution, pH 7.2, containing 0.09% sodium azide.
Test format: Phosphate-buffered solution, pH 7.2, containing 0.09% sodium azide, 0.2% (w/v) BSA (USA origin).

Storage: The antibody solution should be stored undiluted at 4°C and protected from prolonged exposure to light. **Do not freeze.**



IFN- γ -primed and then LPS-stimulated (overnight) human peripheral blood monocytes surface stained with CD14 (M5E2) PE and intracellularly stained with C11.5 APC

Applications:

Applications: ICFC - *Quality tested*

Recommended Usage: Each lot of this antibody is quality control tested by intracellular immunofluorescent staining with flow cytometric analysis. **Test size products are transitioning from 20 μ l to 5 μ l per test.** Please check your vial or your CoA to find the suggested use of this reagent per million cells in 100 μ l staining volume or per 100 μ l of whole blood. It is recommended that the reagent be titrated for optimal performance for each application. Read more at www.biolegend.com/testsize regarding the test size change.

Application Notes: **Flow Cytometry^{3,5}:** The fluorochrome-labeled C11.5 antibody is useful for intracellular immunofluorescent staining and flow cytometric analysis to identify IL-12 p40 (monomeric, heterodimeric, homodimeric) -producing cells within mixed cell populations. For intracellular cytokine staining protocol, please visit www.biolegend.com and click on the support section.

Neutralization⁶: The LEAF™ purified antibody (Endotoxin **Additional reported applications (for the relevant formats) include:** Western blotting, ELISA Capture^{1,2}, ICFC Blocking, immunohistochemical staining⁴ of paraformaldehyde-fixed, saponin-treated tissue frozen sections, and immunocytochemistry.

Note: For testing human IL-12/IL-23 p40 (monomer, dimer) in serum or plasma, BioLegend's ELISA Max™ Sets (Cat. No. 430701 to 430706) are specially developed and recommended. For testing human IL-12 p70 in serum or plasma, BioLegend's ELISA Max™ Sets (Cat. No. 431701 to 431706) are specially developed and recommended.

- Application References:**
1. D'Andrea A, *et al.* 1992. *J. Exp. Med.* 176:1387.
 2. D'Andrea A, *et al.* 1993. *J. Exp. Med.* 178:1041.
 3. Prussin C, *et al.* 1995. *J. Immunol. Meth.* 188:117.
 4. Leifeld L, *et al.* 2002. *Hepatology* 36:1001.
 5. Pekkari K, *et al.* 2001. *Blood* 97:3184.
 6. Bolovan-Fritts CA, *et al.* 2004. *J. Virol.* 78:13173.

Description: The C11.5 antibody reacts with human IL-12 p40 subunit of the IL-12 p70 heterodimer and IL-23 p40 subunit of the IL-23 p19/p40, as well as p40 monomer and homodimer. The C11.5 antibody can neutralize the bioactivity of natural or recombinant IL-12 p70.

- Antigen References:**
1. Fitzgerald K, *et al.* Eds. 2001. *The Cytokine FactsBook*. Academic Press San Diego.
 2. Quesniaux V. 1992. *Research Immunol.* 143:385.
 3. Trinchieri G, *et al.* 1992 *Prog. Growth Factor Res.* 4:355.
 4. Trinchieri G, *et al.* 1993 *Immunol. Today.* 14:335.
 5. Oppmann B, *et al.* 2000 *Immunity.* 13:715.
 6. Aggarwal S, *et al.* 2003 *J. Biol. Chem.* 278:1910.
 7. Parham C, *et al.* 2002 *J. Immunol.* 168:5699.
 8. Belladonna ML, *et al.* 2002 *J. Immunol.* 168:5448.
 9. Lankford CS, *et al.* 2003 *J. Leukoc. Biol.* 73:49.

Related Products:

Product
Cell Staining Buffer
Fixation Buffer
Permeabilization Wash Buffer (10X)
Brefeldin A Solution (1,000X)

Clone

Application

FC, ICC, ICFC
ICC, ICFC
ICC, ICFC, IHC
ICFC



For research use only. Not for diagnostic use. Not for resale. BioLegend will not be held responsible for patent infringement or other violations that may occur with the use of our products.



*These products may be covered by one or more Limited Use Label Licenses (see the BioLegend Catalog or our website, www.biolegend.com/ordering#license). BioLegend products may not be transferred to third parties, resold, modified for resale, or used to manufacture commercial products, reverse engineer functionally similar materials, or to provide a service to third parties without written approval of BioLegend. By use of these products you accept the terms and conditions of all applicable Limited Use Label Licenses. Unless otherwise indicated, these products are for research use only and are not intended for human or animal diagnostic, therapeutic or commercial use.

Monensin Solution (1,000X)
APC Mouse IgG1, κ Isotype Ctrl (ICFC)

MOPC-21

ICFC
ICFC



For research use only. Not for diagnostic use. Not for resale. BioLegend will not be held responsible
for patent infringement or other violations that may occur with the use of our products.



*These products may be covered by one or more Limited Use Label Licenses (see the BioLegend Catalog or our website, www.biolegend.com/ordering#license). BioLegend products may not be transferred to third parties, resold, modified for resale, or used to manufacture commercial products, reverse engineer functionally similar materials, or to provide a service to third parties without written approval of BioLegend. By use of these products you accept the terms and conditions of all applicable Limited Use Label Licenses. Unless otherwise indicated, these products are for research use only and are not intended for human or animal diagnostic, therapeutic or commercial use.

BioLegend Inc., 9727 Pacific Heights Blvd, San Diego, CA 92121 www.biolegend.com
Toll-Free Phone: 1-877-Bio-Legend (246-5343) Phone: (858) 768-5800 Fax: (877) 455-9587