

Product Data Sheet

Alexa Fluor® 488 anti-human IL-10

Catalog # / Size: 501413 / 25 tests
501411 / 100 tests

Clone: JES3-9D7

Isotype: Rat IgG1, κ

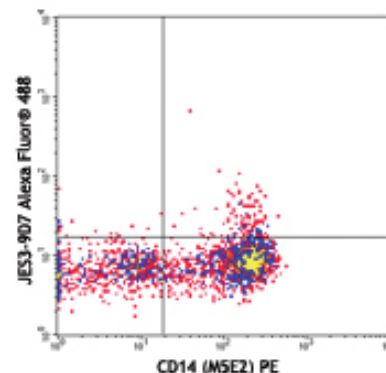
Immunogen: COS - expressed, recombinant human IL-10

Reactivity: Human, **Cross-Reactivity:** Baboon, Rhesus, Cynomolgus

Preparation: The antibody was purified by affinity chromatography, and conjugated with Alexa Fluor® 488 under optimal conditions. The solution is free of unconjugated Alexa Fluor® 488.

Formulation: Phosphate-buffered solution, pH 7.2, containing 0.09% sodium azide and 0.2% (w/v) BSA (origin USA).

Storage: The antibody solution should be stored undiluted at 4°C and protected from prolonged exposure to light. **Do not freeze.**



LPS-stimulated (overnight) human peripheral blood monocytes surface stained with CD14 (M5E2) PE and intracellularly stained with JES3-9D7 Alexa Fluor® 488

Applications:

Applications: ICFC - *Quality tested*

Recommended Usage: Each lot of this antibody is quality control tested by intracellular immunofluorescent staining with flow cytometric analysis. For immunofluorescent staining, the suggested use of this reagent is 5 μ l per 10⁶ cells in 100 μ l volume. It is recommended that the reagent be titrated for optimal performance for each application.

* Alexa Fluor® 488 has a maximum emission of 519 nm when it is excited at 488 nm.

** Alexa Fluor® is a registered trademark of Molecular Probes, Inc. Alexa Fluor® dye antibody conjugates are sold under license from Molecular Probes, Inc. for research use only, except for use in combination with microarrays and high content screening, and are covered by pending and issued patents.

Application Notes: **ELISA Capture¹⁻⁵ or ELISPOT Capture⁶:** The purified JES3-9D7 antibody is useful as the capture antibody in a sandwich ELISA, when used in conjunction with the biotinylated JES3-12G8 antibody (Cat. No. 501502) as the detecting antibody and recombinant human IL-10 (Cat. No. 561201) as the standard. The LEAF™ purified antibody is suggested for ELISPOT capture.

Neutralization^{1-3,9}: The LEAF™ purified antibody (Endotoxin <0.1 EU/ μ g, Azide-Free, 0.2 μ m filtered) is recommended for neutralization of human IL-10 bioactivity (Cat. No. 501407). The JES3-9D7 antibody can neutralize the bioactivity of natural or recombinant IL-10.

Additional reported applications (for the relevant formats) include: immunohistochemical staining¹²

Note: For testing human IL-10 in serum or plasma, BioLegend's ELISA Max™ Sets (Cat. No. 430601 to 430606) are specially developed and recommended.

- Application References:**
1. Abrams J, *et al.* 1992. *Immunol. Rev.* 127:5. (ELISA Capture, Neut)
 2. Gotlieb W, *et al.* 1992. *Cytokine* 4:385. (ELISA Capture, Neut)
 3. Yssel H, *et al.* 1992. *J. Immunol.* 149:2378. (ELISA Capture, Neut)
 4. Abrams J. 1995. *Curr. Prot. Immunol.* John Wiley and Sons New York. Unit 6.20. (ELISA Capture)
 5. Burdin N, *et al.* 1993. *J. Exp. Med.* 177:295. (ELISA Capture)
 6. Klinman D, *et al.* 1994. *Curr. Prot. Immunol.* John Wiley and Sons New York. Unit 6.19. (ELISPOT Capture)
 7. Schaeferli P, *et al.* 2000. *J. Exp. Med.* 192:1553.
 8. Jason J, *et al.* 1999. *Clin. Diagn. Lab Immunol.* 6:73.
 9. Akdis CA, *et al.* 1998. *J. Clin. Invest.* 102:98. (Neut)
 10. Stary G, *et al.* 2011. *J. Immunol.* 186:103. PubMed
 11. Mason GM, *et al.* 2012. *PNAS.* PubMed.
 12. Smith DR, *et al.* 1994. *Am. J. Pathol.* 145:18. (IHC)

Description: IL-10 was originally described as Cytokine Synthesis Inhibitory Factor (CSIF) by virtue of its ability to inhibit cytokine production by Th1 clones. IL-10 shares over 80% sequence homology with the Epstein-Barr virus protein BCRF1. The biological activities of IL-10 include inhibition of macrophage-mediated cytokine synthesis, suppression of the delayed type hypersensitivity response, and stimulation of the Th2 cell response, which results in elevated antibody production. The JES3-9D7 antibody reacts with human and viral interleukin-10 (IL-10).

Antigen References: 1. Fitzgerald K, *et al.* Eds. 2001. *The Cytokine FactsBook.* Academic Press San Diego.



For research use only. Not for diagnostic use. Not for resale. BioLegend will not be held responsible for patent infringement or other violations that may occur with the use of our products.



*These products may be covered by one or more Limited Use Label Licenses (see the BioLegend Catalog or our website, www.biollegend.com/ordering#license). BioLegend products may not be transferred to third parties, resold, modified for resale, or used to manufacture commercial products, reverse engineer functionally similar materials, or to provide a service to third parties without written approval of BioLegend. By use of these products you accept the terms and conditions of all applicable Limited Use Label Licenses. Unless otherwise indicated, these products are for research use only and are not intended for human or animal diagnostic, therapeutic or commercial use.

2. de Waal-Malefyt R, *et al.* 1992. *Curr. Opin. Immunol.* 4:314.
3. Howard M, *et al.* 1992. *Immunol. Today.* 13:198.
4. Quesniaux V. 1992. *Research Immunol.* 143:385.

Related Products:	Product	Clone	Application
	Cell Staining Buffer		FC, ICC, ICFC
	Fixation Buffer		ICC, ICFC
	Permeabilization Wash Buffer (10X)		ICC, ICFC, IHC
	Brefeldin A Solution (1,000X)		ICFC
	Monensin Solution (1,000X)		ICFC
	7-AAD Viability Staining Solution		FC
	Alexa Fluor® 488 Rat IgG1, κ Isotype	RTK2071	FC, ICFC
	Ctrl		



For research use only. Not for diagnostic use. Not for resale. BioLegend will not be held responsible for patent infringement or other violations that may occur with the use of our products.



*These products may be covered by one or more Limited Use Label Licenses (see the BioLegend Catalog or our website, www.biolegend.com/ordering#license). BioLegend products may not be transferred to third parties, resold, modified for resale, or used to manufacture commercial products, reverse engineer functionally similar materials, or to provide a service to third parties without written approval of BioLegend. By use of these products you accept the terms and conditions of all applicable Limited Use Label Licenses. Unless otherwise indicated, these products are for research use only and are not intended for human or animal diagnostic, therapeutic or commercial use.