

Product Data Sheet

Pacific Blue™ anti-mouse IL-10

Catalog # / Size: 505019 / 25 µg
505020 / 100 µg

Clone: JES5-16E3

Isotype: Rat IgG2b, κ

Immunogen: *E. coli*-expressed, recombinant mouse IL-10

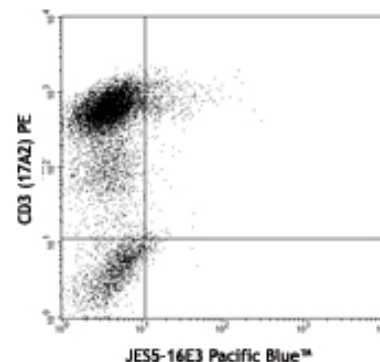
Reactivity: Mouse

Preparation: The antibody was purified by affinity chromatography, and conjugated with Pacific Blue™ under optimal conditions. The solution is free of unconjugated Pacific Blue™.

Formulation: Phosphate-buffered solution, pH 7.2, containing 0.09% sodium azide.

Concentration: 0.5 mg/ml

Storage: The antibody solution should be stored undiluted at 4°C and protected from prolonged exposure to light. **Do not freeze.**



Th2 polarized C57BL/6 splenocytes stained with JES5-16E3 Pacific Blue™ and CD3 (17A2) PE

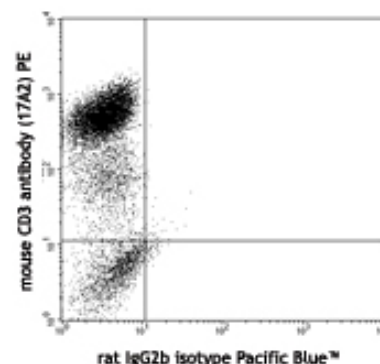
Applications:

Applications: ICFC - *Quality tested*

Recommended Usage: Each lot of this antibody is quality control tested by intracellular immunofluorescent staining with flow cytometric analysis. For immunofluorescent staining, the suggested use of this reagent is ≤ 1.0 µg per 10⁶ cells in 100 µl volume or 100 µl of whole blood. It is recommended that the reagent be titrated for optimal performance for each application.

* Pacific Blue™ has a maximum emission of 455 nm when it is excited at 405 nm. Prior to using Pacific Blue™ conjugate for flow cytometric analysis, please verify your flow cytometer's capability of exciting and detecting the fluorochrome.

** Pacific Blue™ is a registered trademark of Molecular Probes, Inc. Pacific Blue™ dye antibody conjugates are sold under license from Molecular Probes, Inc. for research use only, except for use in combination with microarrays and high content screening, and are covered by pending and issued patents.



Th2 polarized C57BL/6 splenocytes stained with rat IgG2b isotype Pacific Blue™ and mouse CD3 antibody (17A2) PE

Application Notes: **ELISA or ELISPOT Detection^{1,9,11}:** The biotinylated JES5-16E3 antibody is useful as a detection antibody for a sandwich ELISA or ELISPOT assay, when used in conjunction with purified JES5-2A5 antibody (Cat. No. 504902/504904) as the capture antibody.

Neutralization¹⁴: The LEAF™ Purified JES5-16E3 antibody can neutralize the bioactivity of natural or recombinant IL-10.

Application References:

1. Simkin G, *et al.* 2000. *J. Immunol.* 164:2457.
2. Kitagaki K, *et al.* 2002. *Clin. Diagn. Lab Immunol.* 9:1260.
3. Khanna A, *et al.* 2000. *J. Immunol.* 164:1346.
4. Sander B, *et al.* 1993. *J. Immunol. Methods* 166:201.
5. Litton M, *et al.* 1994. *J. Immunol. Methods* 175:47.
6. Andersson U, *et al.* 1999. *Detection and quantification of gene expression.* New York:Springer-Verlag.
7. Finkelman F, *et al.* 2003. *Curr. Prot. Immunol.* John Wiley & Sons New York. Unit 6.28.
8. Wang W, *et al.* 2004. *FASEB J.* 18:1043.
9. Brummel R and Lenert P. 2005. *J. Immunol.* 174:2429.
10. Lawson BR, *et al.* 2007. *J. Immunol.* 178:5366.
11. Xu G, *et al.* 2007. *J. Immunol.* 179:5358. PubMed
12. Brummel R, *et al.* 2005. *J. Immunol.* 174:2429. PubMed
13. Kang YJ, *et al.* 2007. *Stem Cells* 25:1814. PubMed
14. Seo N, *et al.* 2001. *Immunology.* 103:449. (Neut)

Description: IL-10 was originally described as Cytokine Synthesis Inhibitory Factor (CSIF) by virtue of its ability to inhibit cytokine production by Th1 clones. IL-10 shares over 80% sequence homology with the Epstein-Barr virus protein BCRF1. IL-10 inhibits IFN-γ, TNF-β, and IL-2 production by Th1 clones; inhibits macrophage-mediated IL-1, IL-6, and TNF-α synthesis; suppresses the delayed type hypersensitivity response; stimulates Th2 cell response (which results in elevated antibody production); and promotes mast cell proliferation in combination with IL-4.



For research use only. Not for diagnostic use. Not for resale. BioLegend will not be held responsible for patent infringement or other violations that may occur with the use of our products.



*These products may be covered by one or more Limited Use Label Licenses (see the BioLegend Catalog or our website, www.biolegend.com/ordering#license). BioLegend products may not be transferred to third parties, resold, modified for resale, or used to manufacture commercial products, reverse engineer functionally similar materials, or to provide a service to third parties without written approval of BioLegend. By use of these products you accept the terms and conditions of all applicable Limited Use Label Licenses. Unless otherwise indicated, these products are for research use only and are not intended for human or animal diagnostic, therapeutic or commercial use.

Antigen References: 1. Fitzgerald K, *et al.* Eds. 2001. The Cytokine FactsBook. Academic Press San Diego.
2. de Waal-Malefy R, *et al.* 1992. *Curr. Opin. Immunol.* 4:314.
3. Howard M, *et al.* 1992. *Immunol. Today* 13:198.
4. Quesniaux V. 1992. *Res. Immunol.* 143:385.
5. Norton SK, *et al.* 2008. *J. Immunol.* 180:2848.

Related Products:	Product	Clone	Application
	Pacific Blue™ Rat IgG2b, κ Isotype Ctrl	RTK4530	FC, ICFC
	Cell Staining Buffer		FC, ICC, ICFC
	RBC Lysis Buffer (10X)		FC, ICFC
	Fixation Buffer		ICC, ICFC
	Permeabilization Wash Buffer (10X)		ICC, ICFC, IHC
	Brefeldin A Solution (1,000X)		ICFC
	Monensin Solution (1,000X)		ICFC



For research use only. Not for diagnostic use. Not for resale. BioLegend will not be held responsible for patent infringement or other violations that may occur with the use of our products.



*These products may be covered by one or more Limited Use Label Licenses (see the BioLegend Catalog or our website, www.biolegend.com/ordering#license). BioLegend products may not be transferred to third parties, resold, modified for resale, or used to manufacture commercial products, reverse engineer functionally similar materials, or to provide a service to third parties without written approval of BioLegend. By use of these products you accept the terms and conditions of all applicable Limited Use Label Licenses. Unless otherwise indicated, these products are for research use only and are not intended for human or animal diagnostic, therapeutic or commercial use.