

Product Data Sheet

FITC anti-human IL-1 β

Catalog # / Size: 508206 / 100 tests

Clone: JK1B-1

Isotype: Mouse IgG1

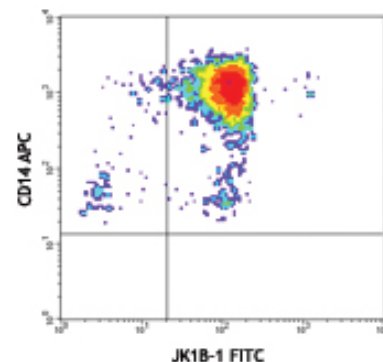
Immunogen: Recombinant human IL-1 beta

Reactivity: Human, **Cross-Reactivity:** Baboon

Preparation: The antibody was purified by affinity chromatography, and conjugated with FITC under optimal conditions. The solution is free of unconjugated FITC.

Formulation: Phosphate-buffered solution, pH 7.2, containing 0.09% sodium azide and 0.2% (w/v) BSA (origin USA).

Storage: The antibody solution should be stored undiluted at 4°C and protected from prolonged exposure to light. **Do not freeze.**

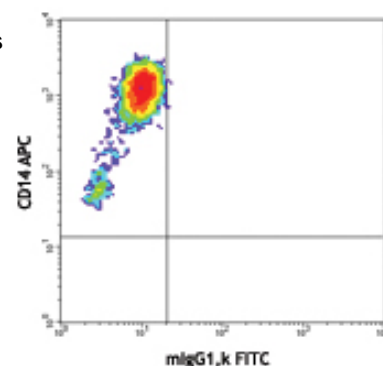


Applications:

Applications: ICFC - *Quality tested*

Recommended Usage: Each lot of this antibody is quality control tested by intracellular immunofluorescent staining with flow cytometric analysis. **Test size products are transitioning from 20 μ l to 5 μ l per test.** Please check your vial or your CoA to find the suggested use of this reagent per million cells in 100 μ l staining volume or per 100 μ l of whole blood. It is recommended that the reagent be titrated for optimal performance for each application. Read more at www.biolegend.com/testsize regarding the test size change.

Application Notes: **ELISA and ELISPOT Capture:** The purified JK1B-1 antibody is useful as the capture antibody in a sandwich ELISA assay, when used in conjunction with the biotinylated JK1B-2 antibody (Cat. No. 508301) as the detecting antibody. The LEAF™ purified antibody is suggested for ELISPOT capture. **Flow Cytometry:** The fluorochrome-labeled JK1B-1 antibody is useful for intracellular immunofluorescent staining and flow cytometric analysis to identify IL-1 β -producing cells within mixed cell populations. For intracellular cytokine staining protocol, please visit www.biolegend.com and click on the support section.



LP-stimulated (6 hours) human peripheral blood monocytes surface stained with CD14 APC then intracellularly stained with JK1B-1 FITC (top) or mlgG1,k isotype control FITC (bottom)

Description: IL-1 refers to two proteins, IL-1 α and IL-1 β which are the products of distinct genes, but which are recognized by the same cell surface receptors. IL-1 β is a potent immuno-modulator which mediates a wide range of immune and inflammatory responses including the activation of B and T cells. The JK1B-1 antibody reacts with human interleukin-1 β (IL-1 β) and baboon IL-1 β . The JK1B-1 antibody does not recognize mouse IL-1 β or human IL-1 α or other cytokines. The JK1B-1 antibody can neutralize the bioactivity of natural or recombinant IL-1 β .

Antigen References:

1. Fitzgerald K, *et al.* Eds. 2001. The Cytokine FactsBook. Academic Press San Diego.
2. Bomford R, *et al.* Eds. 1989. *Interleukin-1 inflammation and disease*. Elsevier New York.
3. Brazel D, *et al.* 1991. *Biotechnol. Ther.* 2:241.
4. Dinarello C. 1996. *Blood* 87:2095.

Related Products:

Product
Cell Staining Buffer
FITC Mouse IgG1, κ Isotype Ctrl (ICFC)

Clone

MOPC-21

Application

FC, ICC, ICFC
ICFC



For research use only. Not for diagnostic use. Not for resale. BioLegend will not be held responsible for patent infringement or other violations that may occur with the use of our products.



*These products may be covered by one or more Limited Use Label Licenses (see the BioLegend Catalog or our website, www.biolegend.com/ordering#license). BioLegend products may not be transferred to third parties, resold, modified for resale, or used to manufacture commercial products, reverse engineer functionally similar materials, or to provide a service to third parties without written approval of BioLegend. By use of these products you accept the terms and conditions of all applicable Limited Use Label Licenses. Unless otherwise indicated, these products are for research use only and are not intended for human or animal diagnostic, therapeutic or commercial use.