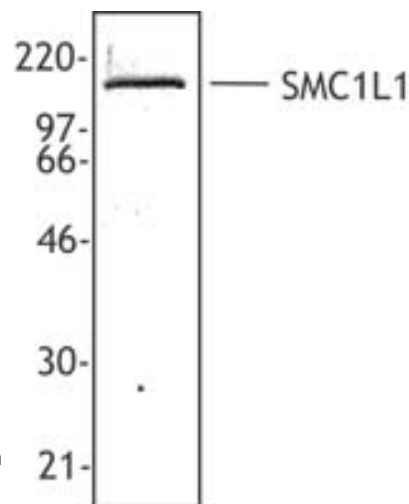


Product Data Sheet

Purified anti-SMC1L1/SMC1

Catalog # / Size: 609602 / 200 µl (20 Western blots)
Clone: Poly6096
Isotype: Rabbit IgG
Immunogen: Recombinant (partial) , N-terminal
Reactivity: Mouse, Human
Preparation: The antibody was purified by antigen-affinity chromatography.
Formulation: This antibody is provided in phosphate-buffered solution, pH 7.2, containing 0.09% sodium azide and 50% glycerol.
Storage: Upon receipt, store frozen at -20° C.



Hela cell nuclear extract was resolved by electrophoresis, transferred to nitrocellulose, and probed with rabbit anti-SMC1L1 antibody. Proteins were visualized using a donkey anti-rabbit secondary conjugated to HRP and a chemiluminescence detection system.

Applications:

Applications: IF, WB

Recommended Usage: Each lot of this antibody is quality control tested by Western blotting. Western blotting, suggested working dilution(s): Use 10 µl per 5 ml antibody dilution buffer for each mini-gel. It is recommended that the reagent be titrated for optimal performance for each application.

Description: SMC1L1/SMC1 (structural maintenance of chromosome 1-like 1 (yeast)) is a 145-160 kD heterodimeric protein that is a member of the SMC family. This nuclear protein dissociates from chromosomes before mitosis but remains associated with kinetochore during mitosis. SMC1L1/SMC1 is located on the X-chromosome and is involved in mitotic chromosome dynamics. The SMC family includes SMC3, SMC1L1, and SMC1L2 which form part of the cohesion multiprotein complex. This protein can also form heterodimers consisting of SMC1L1/SMC3 or SMC1L2/SMC3 and may also be involved in DNA repair. SMC1L1/SMC1 is phosphorylated by ATM after DNA damage; phosphorylation is also required for sister chromatid cohesion and correct segregation of chromosomes during cell division. SMC1L1/SMC1 associates with BRCA1, and SYCP2, and interacts directly with SMC3 in the cohesion complex (linked by RAD21 complexed to one STAG protein). The Poly6096 antibody recognizes the N-terminal region of human and mouse SMC1L1/SMC1 and has been shown to be useful for Western blotting and immunofluorescence staining.

Antigen References: 1. Zhou S, *et al.* 1998. *P. Natl. Acad. Sci. USA* 95:12906.
 2. Yazdi P, *et al.* 2002. *Genes Dev.* 16:571.
 3. Rocques P, *et al.* 1995. *Hum. Mol. Genet.* 4:243.

Related Products:	Product	Clone	Application
	Purified anti-ATM-Acetylated (Lys41)	1D5	WB
	Purified anti-ATM-Acetylated (Lys41)	1G7	WB
	Purified anti-BRCA1	Poly6121	WB
	HRP Donkey anti-rabbit IgG (minimal x-reactivity)	Poly4064	ELISA, IHC, WB



For research use only. Not for diagnostic use. Not for resale. BioLegend will not be held responsible for patent infringement or other violations that may occur with the use of our products.



*These products may be covered by one or more Limited Use Label Licenses (see the BioLegend Catalog or our website, www.biollegend.com/ordering#license). BioLegend products may not be transferred to third parties, resold, modified for resale, or used to manufacture commercial products, reverse engineer functionally similar materials, or to provide a service to third parties without written approval of BioLegend. By use of these products you accept the terms and conditions of all applicable Limited Use Label Licenses. Unless otherwise indicated, these products are for research use only and are not intended for human or animal diagnostic, therapeutic or commercial use.