

Product Data Sheet

Purified anti-Spt16 (FACT140 complex)

Catalog # / Size: 607001 / 25 µg
 607002 / 100 µg

Clone: 8D2

Isotype: Mouse IgG2a, κ

Immunogen: Recombinant (full length)

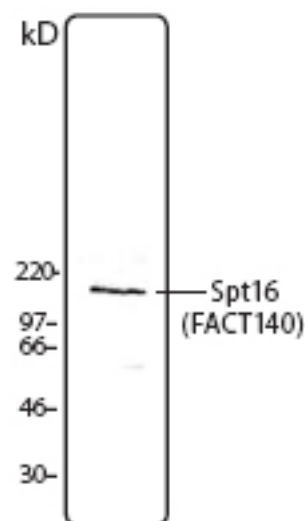
Reactivity: Human

Preparation: The antibody was purified by affinity chromatography.

Formulation: This antibody is provided in phosphate-buffered solution, pH 7.2, containing 0.09% sodium azide. The antibody is provided at 0.5 mg/ml.

Concentration: 0.5 mg/ml

Storage: Upon receipt, store at 4°C.



HeLa cell extract was resolved by electrophoresis, transferred to nitrocellulose and probed with monoclonal anti-Spt16 (Clone 8D2) antibody. Proteins were visualized using a donkey anti-mouse secondary antibody conjugated to HRP and a chemiluminescence system.

Applications:

Applications: WB-*Quality tested*
 IP, IF - *Reported in the literature*

Recommended Usage: Each lot of this antibody is quality control tested by Western blotting. Western blotting, suggested working dilution(s): Use 5 µg per 5 ml antibody dilution buffer for each mini-gel. It is recommended that the reagent be titrated for optimal performance for each application.

Application References:

1. Tan B C-M, *et al.* 2006. *EMBO* doi:10.1038/sj.emboj.7601271
2. Adelmant G, *et al.* 2012. *Mol Cell Proteomics*. 11:411. PubMed.
3. Lolis AA, *et al.* 2013. *J Biol Chem*. 288:7676. PubMed.

Description: Spt16 is a 120-140 kD nuclear protein and a component of the FACT complex (facilitates chromatin transcription). The FACT140 complex is composed of the Spt16 and the SSRP1 proteins. This complex interacts with nucleosomes and histone H2A/H2B dimers to promote nucleosome disassembly and allow transcription elongation. The 8D2 monoclonal antibody recognizes human Spt16 and has been shown to be useful for Western blotting.

Antigen References:

1. LeRoy G, *et al.* 1998. *Science* 282:1836.
2. Orphanides G, *et al.* 1998. *Cell* 92:105.
3. Orphanides G, *et al.* 1999. *Nature* 400:284.

Related Products:

Product	Clone	Application
HRP Goat anti-mouse IgG (minimal x-reactivity)	Poly4053	ELISA, IHC, WB
Purified anti-SSRP1	10D1	WB, ChIP, IP, IF
Purified anti-SSRP1	3E4	WB, IP, IF



For research use only. Not for diagnostic use. Not for resale. BioLegend will not be held responsible for patent infringement or other violations that may occur with the use of our products.



*These products may be covered by one or more Limited Use Label Licenses (see the BioLegend Catalog or our website, www.biollegend.com/ordering#license). BioLegend products may not be transferred to third parties, resold, modified for resale, or used to manufacture commercial products, reverse engineer functionally similar materials, or to provide a service to third parties without written approval of BioLegend. By use of these products you accept the terms and conditions of all applicable Limited Use Label Licenses. Unless otherwise indicated, these products are for research use only and are not intended for human or animal diagnostic, therapeutic or commercial use.