

Product Data Sheet

Purified anti-Prohibitin

Catalog # / Size: 603101 / 50 µl (5 Western blots)
 603102 / 200 µl (20 Western blots)

Clone: Poly6031

Isotype: Rabbit IgG

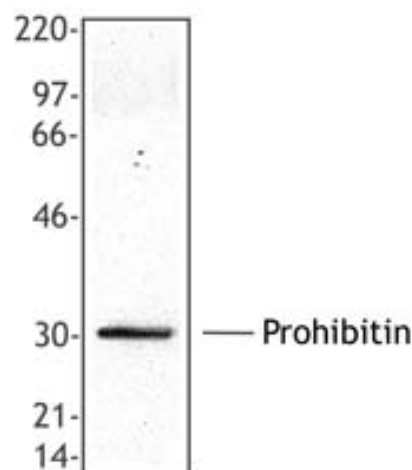
Immunogen: Recombinant (partial), C-terminal

Reactivity: Human

Preparation: The antibody was purified by affinity chromatography.

Formulation: This antibody is provided in phosphate-buffered solution, pH 7.2, containing 0.09% sodium azide and 50% glycerol.

Storage: Upon receipt, store frozen at -20° C.



MCF7 cell extract was resolved by electrophoresis, transferred to nitrocellulose, and probed with rabbit anti-prohibitin antibody. Proteins were visualized using a donkey anti-rabbit secondary conjugated to HRP and a chemiluminescence detection system.

Applications:

Applications: WB

Recommended Usage: Each lot of this antibody is quality control tested by Western blotting. Western blotting, suggested working dilution(s): Use 10 µl per 5 ml antibody dilution buffer for each mini-gel. It is recommended that the reagent be titrated for optimal performance for each application.

Application References:

1. Witkowski A. 2007. *J. Biol. Chem.* doi:10.1074/jbc.M701486200.PubMed
2. Da Silva-Azevedo L, et al. 2008. *J Physiol.* PubMed
3. Patel N, et al. 2010. *Proc Natl Acad Sci USA* 107:2503. PubMed
4. He J, et al. 2012. *Nucleic Acid Res.* PubMed.

Description: Prohibitin is a 30 kD member of the band 7 family containing a SPFH domain. Prohibitin is localized the nucleus and mitochondrial inner cell membrane. This protein functions as a negative regulator of cell proliferation associated with senescence and cell death and a transcriptional repressor via recruitment of Brg-1, Brm or N-CoR, or HDAC1. Prohibitin can also function as a membrane-bound chaperone for the assembly of the mitochondrial respiratory chain complex. Prohibitin is induced by metabolic stress caused by imbalance in synthesis of mitochondrial-, nuclear-encoded mitochondrial proteins. Prohibitin can be modified by phosphorylation and ubiquitination. This protein has been shown to interact with Rb, Brg-1, Brm, N-CoR, HDAC1, and PHB2. The Poly6031 antibody recognizes the C-terminal region of human prohibitin and has been shown to be useful for Western blotting.

Antigen References:

1. White J, et al. 1991. *Genomics* 11:228.
2. Nijtmans L, et al. 2002. *Cell Mol. Life Sci.* 59:143.
3. Wang S, et al. 2002. *Oncogene* 21:8388.
4. Thompson W, et al. 2003. *Biol. Reprod.* 69:254.

Related Products:

Product

Purified anti-HDAC1

Purified anti-Rb

HRP Donkey anti-rabbit IgG (minimal x-reactivity)

Clone

Poly6074

Poly6146

Poly4064

Application

WB, IF

WB

ELISA, IHC, WB



For research use only. Not for diagnostic use. Not for resale. BioLegend will not be held responsible for patent infringement or other violations that may occur with the use of our products.



*These products may be covered by one or more Limited Use Label Licenses (see the BioLegend Catalog or our website, www.biollegend.com/ordering#license). BioLegend products may not be transferred to third parties, resold, modified for resale, or used to manufacture commercial products, reverse engineer functionally similar materials, or to provide a service to third parties without written approval of BioLegend. By use of these products you accept the terms and conditions of all applicable Limited Use Label Licenses. Unless otherwise indicated, these products are for research use only and are not intended for human or animal diagnostic, therapeutic or commercial use.