

Product Data Sheet

Purified anti-Ninein

Catalog # / Size: 602801 / 50 µl (5 Western blots)
 602802 / 200 µl (20 Western blots)

Clone: Poly6028

Isotype: Rabbit IgG

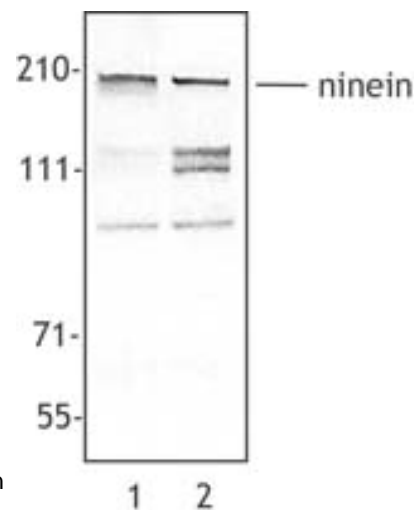
Immunogen: Recombinant (partial), C-terminal

Reactivity: Human

Preparation: The antibody was purified by antigen-affinity chromatography.

Formulation: This antibody is provided in phosphate-buffered solution, pH 7.2, containing 0.09% sodium azide and 50% glycerol.

Storage: Upon receipt, store frozen at -20° C.



MCF7 (Lane 1) and MOLT-4 (Lane 2) cell extract was resolved by electrophoresis, transferred to nitrocellulose and probed with rabbit anti-ninein antibody. Proteins were visualized using a donkey anti-rabbit secondary conjugated to HRP and a chemiluminescence detection system. In hematopoietic cells (such as MOLT-4), two additional bands with apparent molecular weights of 110 and 130 kD are observed.

Applications:

Applications: WB - Quality tested

Recommended Usage: Each lot of this antibody is quality control tested by Western blotting. Western blotting, suggested working dilution(s): Use 10 µl per 5 ml antibody dilution buffer for each mini-gel. It is recommended that the reagent be titrated for optimal performance for each application.

Application References:

1. Chang B, *et al.* 2006. *Human Molecular Genetics* 15(11):1847.PubMed
2. Fuentabala L, *et al.* 2007. *Cell* 131:980.PubMed
3. Matsumoto T, *et al.* 2008. *Arterioscler Thromb Vasc Biol* 10:1161.PubMed
4. Hurd T, *et al.* 2010. *Hum Mol Genet.* 19:4330. PubMed
5. Ibi M, *et al.* 2011. *J Cell Sci.* 124:857. PubMed
6. Dauber A, *et al.* 2012. *J Clin Endocrinol Metab.* 97:2140. PubMed.

Description: Ninein (also known as GSK3β-interacting protein and ninein centrosomal protein) is a chromosome segregation ATPase with 5 reported isoforms, (molecular weights ranging from 236 to 246 kD). Ninein is localized at the centrosome and is thought to position and anchor microtubules minus-ends. Ninein is important for centrosomal function in epithelial cells. This protein is modified by phosphorylation. Ninein has also been shown to interact with CEP250/c-Nap1, CEP110, γ-tubulin, centrin, GSK3β, AIK, and PKA. The Poly6028 antibody recognizes the N-terminal region of human ninein and has been shown to be useful for Western blotting.

Antigen References:

1. Bouckson-Castaing V, *et al.* 1996. *J. Cell Sci.* 109:179.
2. Hong Y, *et al.* 2000. *Biochim. Biophys. Acta* 1492:513.
3. Ou Y, *et al.* 2002. *J. Cell. Sci.* 115:1825.
4. Chen C, *et al.* 2003. *Biochem. Biophys. Res. Commun.* 308:975.

Related Products:

Product
 Purified anti-PKA (catalytic domain)
 Purified anti-GSK-3β
 Purified anti-Tubulin-gamma
 HRP Donkey anti-rabbit IgG (minimal x-reactivity)

Clone
 3B2
 Poly6042
 Poly6209
 Poly4064

Application
 WB
 WB
 IF, WB
 ELISA, IHC, WB



For research use only. Not for diagnostic use. Not for resale. BioLegend will not be held responsible for patent infringement or other violations that may occur with the use of our products.



*These products may be covered by one or more Limited Use Label Licenses (see the BioLegend Catalog or our website, www.biollegend.com/ordering#license). BioLegend products may not be transferred to third parties, resold, modified for resale, or used to manufacture commercial products, reverse engineer functionally similar materials, or to provide a service to third parties without written approval of BioLegend. By use of these products you accept the terms and conditions of all applicable Limited Use Label Licenses. Unless otherwise indicated, these products are for research use only and are not intended for human or animal diagnostic, therapeutic or commercial use.