

Product Data Sheet

Purified anti-Cytokeratin 18

Catalog # / Size: 617201 / 50 µl (5 Western blots)
617202 / 200 µl (20 Western blots)

Clone: Poly6172

Isotype: Rabbit IgG

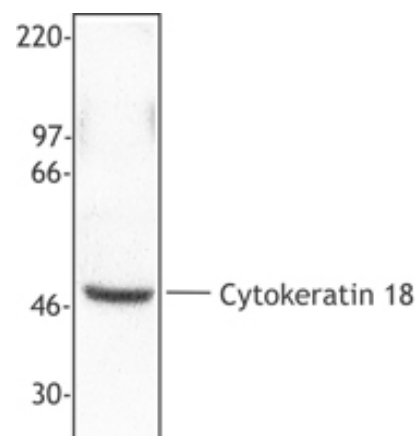
Immunogen: Recombinant (partial), C-terminal

Reactivity: Mouse, Human

Preparation: The antibody was purified by antigen-affinity chromatography.

Formulation: This antibody is provided in phosphate-buffered solution, pH 7.2, containing 0.09% sodium azide and 50% glycerol.

Storage: Upon receipt, store frozen at -20° C.



Hela cell extract was resolved by electrophoresis, transferred to nitrocellulose and probed with anti-cytokeratin 18 antibody. Proteins were visualized using a donkey anti-rabbit secondary conjugated to HRP and a chemiluminescence detection system.

Applications:

Applications: WB - *Quality tested*

Recommended Usage: Each lot of this antibody is quality control tested by Western blotting. Western blotting, suggested working dilution(s): Use 10 µl per 5 ml antibody dilution buffer for each mini-gel. It is recommended that the reagent be titrated for optimal performance for each application.

Description: Keratin 18 (also known as cytokeratin 18) is a 48 kD member of the Type I intermediate filament family, that forms heterotetramers. Keratin 18 is widely expressed in normal single layer epithelial tissues (liver, pancreas) and is expressed at high levels in some tumor tissues. Keratin 18 and filament partner keratin 8 are the most common members of intermediate filament family. Mutations in keratin 18 have been linked to cryptogenic cirrhosis. This protein is induced by retinoic acid, estrogen (breast cancer cells), and the Ras-signaling pathway (Ha-Ras, activated Src, Lck, Raf). Keratin 18 can be modified by phosphorylation, glycosylation, and ubiquitination. The active heterotetramer consists of two type I and two type II keratins (type I is acidic 40-55 kD, type II is neutral to basic 56-70 kD). Keratin 18 has been shown to associate with keratin 8, Mrj (a DnaJ/HSP40 family protein), and Hsp70. The Poly6172 antibody recognizes human and mouse keratin 18 and is useful for Western blotting.

Antigen References:

1. Izawa I, *et al.* 2000. *J. Biol. Chem.* 275:34521.
2. Pankov R, *et al.* 1994. *P. Natl. Acad. Sci. USA* 91:873.
3. Kulesh D, *et al.* 1988. *Mol. Cell. Biol.* 8:1540.
4. Ku N, *et al.* 1997. *J. Clin. Invest.* 99:19.

Related Products: **Product**
HRP Donkey anti-rabbit IgG (minimal x-reactivity)

Clone
Poly4064

Application
ELISA, IHC, WB



For research use only. Not for diagnostic use. Not for resale. BioLegend will not be held responsible for patent infringement or other violations that may occur with the use of our products.



*These products may be covered by one or more Limited Use Label Licenses (see the BioLegend Catalog or our website, www.biollegend.com/ordering#license). BioLegend products may not be transferred to third parties, resold, modified for resale, or used to manufacture commercial products, reverse engineer functionally similar materials, or to provide a service to third parties without written approval of BioLegend. By use of these products you accept the terms and conditions of all applicable Limited Use Label Licenses. Unless otherwise indicated, these products are for research use only and are not intended for human or animal diagnostic, therapeutic or commercial use.