

Product Data Sheet

Purified anti-Dystroglycan Phospho (Tyr893)

Catalog # / Size: 617102 / 200 µl (20 Western blots)
Clone: Poly6171
Isotype: Rabbit IgG
Immunogen: Modified peptide
Reactivity: Human, reacts with Tyr893-phosphorylated dystroglycan
Preparation: The antibody was purified by antigen-affinity chromatography.
Formulation: This antibody is provided in phosphate-buffered solution, pH 7.2, containing 0.09% sodium azide and 50% glycerol.
Storage: Upon receipt, store frozen at -20° C.

Applications:

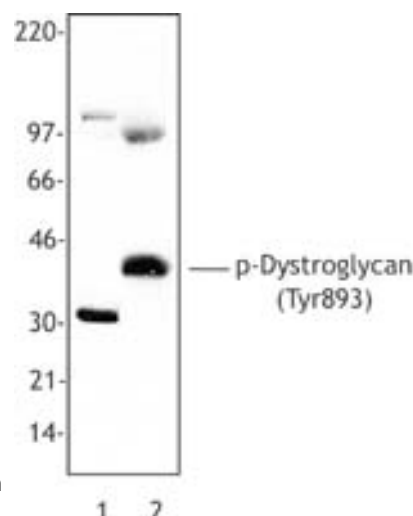
Applications: WB - *Quality tested*
 IHC - *Validated*

Recommended Usage: Each lot of this antibody is quality control tested by Western blotting. Western blotting, suggested working dilution(s): Use 10 µl per 5 ml antibody dilution buffer for each mini-gel. For IHC, use a 1:50 dilution of antibody for staining. Antigen retrieval using 0.01 M sodium citrate buffer is recommended. It is recommended that the reagent be titrated for optimal performance for each application.

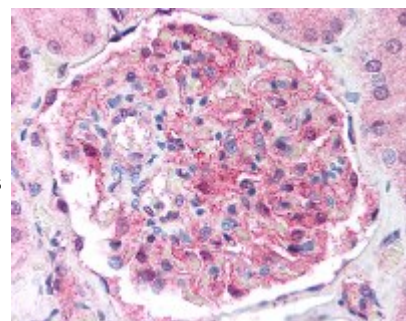
Description: Dystroglycan (also known as dystrophin-associated glycoprotein 1) is a member of the dystroglycan family that contains the WWW binding motif PPXY. This protein has α and β subunits with approximate molecular weights of 156 kD and 43-50 kD, respectively. The dystroglycan β subunit is an integral membrane protein, the α subunit is a ubiquitously expressed extracellular protein. Muscle and non-muscle isoforms differ by carbohydrate moieties (not protein sequence). Dystroglycan functions as an adhesion molecule responsible for interactions between extracellular matrix and the subsarcolemmal cytoskeleton. Dystroglycan binds to lamin in the matrix and dystrophin in the cytoskeleton; phosphorylation regulates the association of interacting proteins. Dystroglycan binds to utrophin when unphosphorylated; c-Src, Fyn, Csk, NCK, and SHC when phosphorylated. Dystroglycan interacts with dystrophin through the WW domain. The Poly6171 antibody recognizes human phosphorylated dystroglycan (Tyr893) and has been shown to be useful for Western blotting.

Antigen References: 1. Sotgia F, *et al.* 2001. *Biochemistry* 40:14585.
 2. James M, *et al.* *J. Cell Sci.* 113:1717.
 3. Huang X, *et al.* 2000. *Nat. Struct. Biol.* 7:634.

Related Products:	Product	Clone	Application
	Purified anti-c-Src	Poly6054	WB
	Purified anti-Shc	Poly6152	WB
	HRP Donkey anti-rabbit IgG (minimal x-reactivity)	Poly4064	ELISA, IHC, WB



HeLa cells were treated with sodium butyrate for 16 hrs (lane 2) or were untreated (lane 1) and cell extracts prepared. Extracts were western blotted with Poly6171. Proteins were visualized using a donkey anti-rabbit secondary conjugated to HRP and a chemiluminescence detection system.



Formalin-fixed paraffin-embedded human kidney tissue was stained with Poly6171 and developed with an alkaline phosphatase chromogen substrate (red color). Tissue was counterstained with H&E (blue/pink). Magnification, 40X.



For research use only. Not for diagnostic use. Not for resale. BioLegend will not be held responsible for patent infringement or other violations that may occur with the use of our products.



*These products may be covered by one or more Limited Use Label Licenses (see the BioLegend Catalog or our website, www.biollegend.com/ordering#license). BioLegend products may not be transferred to third parties, resold, modified for resale, or used to manufacture commercial products, reverse engineer functionally similar materials, or to provide a service to third parties without written approval of BioLegend. By use of these products you accept the terms and conditions of all applicable Limited Use Label Licenses. Unless otherwise indicated, these products are for research use only and are not intended for human or animal diagnostic, therapeutic or commercial use.