

Product Data Sheet

Purified anti-Cytokeratin (pan reactive)

Catalog # / Size: 628601 / 25 µg
628602 / 100 µg

Clone: C-11

Isotype: Mouse IgG1, κ

Immunogen: Keratin enriched fraction from human epidermoid carcinoma.

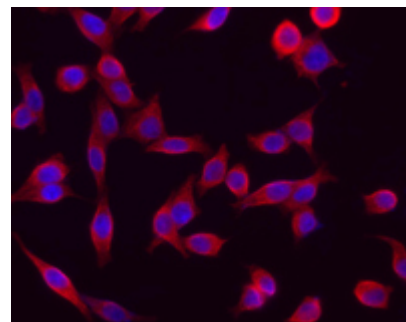
Reactivity: Reacts with conserved epitope in all species tested. Recognizes cytokeratin 4, 5, 6, 8, 10, 13, and 18.

Preparation: The antibody was purified by affinity chromatography.

Formulation: This antibody is provided in phosphate-buffered solution, pH 7.2, containing 0.09% sodium azide at 0.5 mg/ml.

Concentration: 0.5 mg/ml

Storage: The antibody solution should be stored undiluted at 4°C.



HeLa cells stained with purified mouse monoclonal antibody against pan Cytokeratin (clone C-11), followed by Rhodamine Red-X conjugated Donkey anti-mouse IgG and DAPI

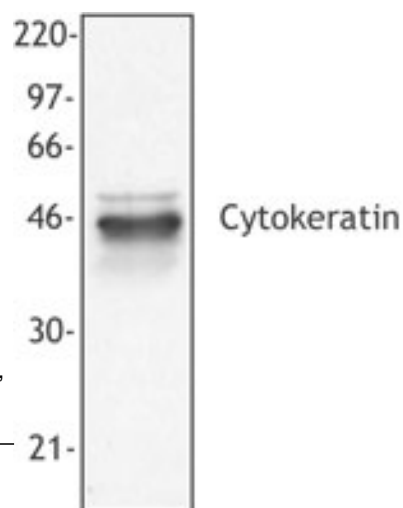
Applications:

Applications: WB - *Quality tested*
IP, IHC, ICC, IF - *Reported in the literature*

Recommended Usage: Each lot of this antibody is quality control tested by Western blotting. Western blotting, suggested working dilution(s): Use 5 µg antibody per 5 ml antibody dilution buffer for each mini-gel. For immunofluorescence microscopy: Use a dilution range of 1-4 µg/ml. It is recommended that the reagent be titrated for optimal performance for each application.

Application References:

1. Kovarik J. 1988. *Int. J. Cancer Suppl.* 3:50.
2. Bartek J, et al. 1991. *J. Pathol.* 164:215.
3. Chernyavsky A I, 2007. *J. Biol. Chem.* doi:10.1074/jbc.M611365200. PubMed
4. Comito G, et al. 2012. *Cancer Lett.* 324:31. PubMed
5. Vojtášek B, et al. 1989. *Folia Biol (Praha).* 35:373. (reactivity with rat, dog, sheep, pig, cow)
6. Dekaney CM, et al. 2005. *Gastroenterology* 129:1567. (ICC)



HeLa cell extract was resolved by electrophoresis, transferred to nitrocellulose and probed with monoclonal anti-cytokeratin antibody (clone C-11). Proteins were visualized using a goat anti-mouse secondary conjugated to HRP and a chemiluminescence detection system.

Description: Cytokeratins are intermediate filament proteins that are widely expressed in many tissues. These proteins are vital components of the cytoskeleton and interact with a number of other proteins. Cytokeratins are usually found in the cytoplasm, although some cytokeratins can be found in the nucleus and the nucleolus. The C-11 monoclonal antibody reacts with conserved epitope in all species tested of cytokeratin 4, 5, 6, 8, 10, 13, and 18. This antibody has been shown to be useful for Western blotting and has also been reported to be useful for immunoprecipitation, immunohistochemistry (paraffin sections), and immunocytochemistry.

Related Products:	Product	Clone	Application
	Purified Goat anti-mouse IgG (minimal x-reactivity)	Poly4053	ELISA, FC, WB, IHC



For research use only. Not for diagnostic use. Not for resale. BioLegend will not be held responsible for patent infringement or other violations that may occur with the use of our products.



*These products may be covered by one or more Limited Use Label Licenses (see the BioLegend Catalog or our website, www.biollegend.com/ordering#license). BioLegend products may not be transferred to third parties, resold, modified for resale, or used to manufacture commercial products, reverse engineer functionally similar materials, or to provide a service to third parties without written approval of BioLegend. By use of these products you accept the terms and conditions of all applicable Limited Use Label Licenses. Unless otherwise indicated, these products are for research use only and are not intended for human or animal diagnostic, therapeutic or commercial use.