

Product Data Sheet

Purified anti-cdc2 (p34)

Catalog # / Size: 626901 / 25 µg
Clone: POH-1
Isotype: Mouse IgG2a, κ
Immunogen: Recombinant human cdc2 protein
Reactivity: Human, Monkey, Cattle (Bovine). Does not react with Mouse, rat, Xenopus, Drosophila
Preparation: This antibody was purified by affinity chromatography.
Formulation: This antibody is provided in phosphate-buffered solution, pH 7.4, containing 0.09% sodium azide at 0.5 mg/ml.
Concentration: 0.5 mg/ml
Storage: Upon receipt, store undiluted at 4°C.

Applications:

Applications: WB - *Quality tested*
 IP, IHC, IF - *Reported in the literature*

Recommended Usage: Each lot of this antibody is quality control tested by Western blotting. For Western blotting, suggested working dilution(s): Use 5 µg per 5 ml antibody dilution buffer for each mini-gel. For immunofluorescence microscopy: Use a dilution range of 1-4 µg/ml. It is recommended that the reagent be titrated for optimal performance for each application.

Application Notes: Additional reported applications (for the relevant formats) include: immunohistochemistry¹ of formalin-fixed, paraffin-embedded tissue sections, immunoprecipitation, and immunofluorescence microscopy.

Application References: 1. Lukas J, *et al.* 1992. *Eur. J. Biochem.* 207:169.

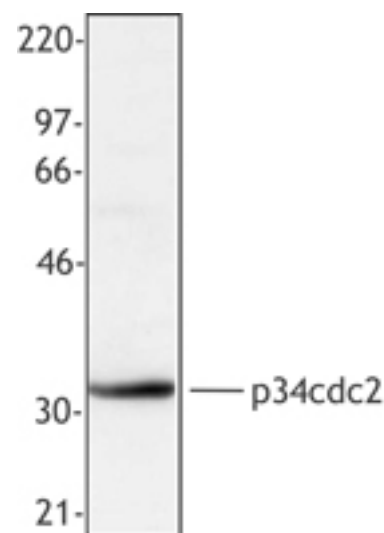
Description: Cdc2 (p34), also known as cell division cycle 2, G1 to S and G2 to M; cyclin dependent kinase 1, p34 kinase, and CDK1, is serine/threonine kinase that is ubiquitously expressed in eukaryotes. Cdc2 is found as both a cytoplasmic and nuclear protein. cdc2 is a catalytic subunit of a protein kinase called the M-phase promoting factor that induces entry into mitosis universally in eukaryotes. The cdc2 protein is highly phosphorylated on threonine, serine, and tyrosine; tyrosine phosphorylation is subject to cell cycle regulation. Cdc2 has been shown to interact with numerous proteins including cyclin A1, cyclin A2, cyclin B1, cyclin B2, BRCA1, dynamin 2, Fyn, Lyn, and p53. The POH-1 antibody recognizes human, monkey and bovine cdc2 and is useful for Western blotting. The POH-1 antibody has also been reported to be useful for immunoprecipitation, immunohistochemistry (formalin-fixed, paraffin embedded), and immunofluorescence.

Antigen References: 1. Draetta G, *et al.* 1988. *Nature* 336:738.

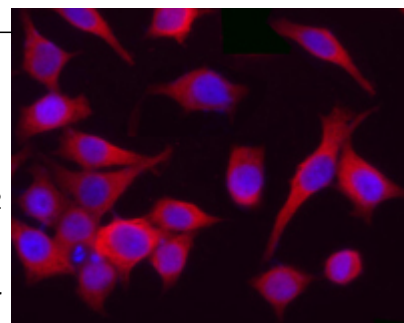
Related Products:
Product
 HRP Goat anti-mouse IgG (minimal x-reactivity)

Clone
 Poly4053

Application
 ELISA, IHC, WB



HeLa extract was resolved by electrophoresis, transferred to nitrocellulose and probed with monoclonal antibody against cdc2 (p34). Proteins were visualized using a goat anti-mouse secondary conjugated to HRP and a chemiluminescence detection system.



HeLa cells stained with purified mouse monoclonal antibody against Cdc2(p34) (clone POH-1), followed by Rhodamine Red-X conjugated goat anti-mouse IgG and DAPI



For research use only. Not for diagnostic use. Not for resale. BioLegend will not be held responsible for patent infringement or other violations that may occur with the use of our products.



*These products may be covered by one or more Limited Use Label Licenses (see the BioLegend Catalog or our website, www.biollegend.com/ordering#license). BioLegend products may not be transferred to third parties, resold, modified for resale, or used to manufacture commercial products, reverse engineer functionally similar materials, or to provide a service to third parties without written approval of BioLegend. By use of these products you accept the terms and conditions of all applicable Limited Use Label Licenses. Unless otherwise indicated, these products are for research use only and are not intended for human or animal diagnostic, therapeutic or commercial use.