

Product Data Sheet

Purified anti-MMP1

Catalog # / Size: 634702 / 100 µg

Clone: F15P3B6

Isotype: Mouse IgG1, κ

Immunogen: Ovalbumin-conjugated synthetic peptide CSSFGFPRTVKH

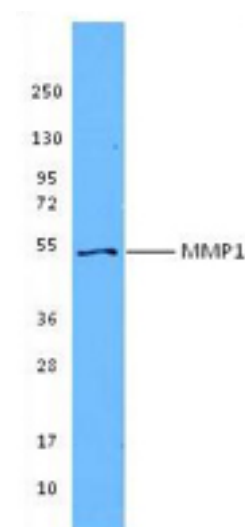
Reactivity: Human

Preparation: The antibody was purified by affinity chromatography.

Formulation: This antibody is provided in phosphate-buffered solution, pH 7.2, containing 0.09% sodium azide at 0.5 mg/ml.

Concentration: 0.5 mg/ml

Storage: The antibody solution should be stored undiluted at 4°C.



Recombinant MMP1 was resolved by electrophoresis, transferred to nitrocellulose, and probed with purified anti-MMP1 antibody (clone F15P3B6). Proteins were visualized using a goat anti-mouse IgG secondary conjugated to HRP and chemiluminescence detection.

Applications:

Applications: WB-*Quality tested*
 IHC - *Reported in the literature*

Recommended Usage: Each lot of this antibody is quality control tested by Western blotting. Western blotting, suggested working dilution(s): Use 4 µg/ml antibody dilution buffer for each mini-gel. It is recommended that the reagent be titrated for optimal performance for each application.

Application References: 1. Murray G et al. 1998. *Gut*. 43:791.
 2. Murray G et al. 1998. *J. Pathol*. 185:256.

Description: Matrix metalloproteinases (MMPs) are zinc-dependent endopeptidases that degrade substances within the extracellular matrix. The MMP family includes six different groups of enzymes: collagenases, gelatinases, stromelysins, transmembrane MMPs, matrilysins and others. MMPs are secreted as proenzymes that have to be cleaved in order to be activated. Other MMPs, plasmins as well as other factors activate MMPs. MMPs are thought to play an important role in tissue remodeling associated with various physiological and pathological processes. MMP1 cleaves collagens of types I, II, III, VII and X. MMP1 is thought to play an important role in rheumatoid and osteo-arthritis pathogenesis as mediators of cartilage and bone destruction. Clone F15P3B6 has been shown to be useful for western blotting and immunohistochemistry of human MMP1.

Antigen References: 1. Boire A, et al. 2005. *Cell* 120:303

Related Products:

Product
 AKP Goat anti-mouse IgG (minimal x-reactivity)
 Biotin Goat anti-mouse IgG (minimal x-reactivity)
 HRP Goat anti-mouse IgG (minimal x-reactivity)
 Purified Mouse IgG1, κ Isotype Ctrl

Clone
 Poly4053
 Poly4053
 Poly4053
 MG1-45

Application
 ELISA, WB, IHC
 FC, ELISA, IHC, IF, WB
 ELISA, IHC, WB
 FC, ICC, ICFC, IF, IHC, IP, WB



For research use only. Not for diagnostic use. Not for resale. BioLegend will not be held responsible for patent infringement or other violations that may occur with the use of our products.



*These products may be covered by one or more Limited Use Label Licenses (see the BioLegend Catalog or our website, www.biollegend.com/ordering#license). BioLegend products may not be transferred to third parties, resold, modified for resale, or used to manufacture commercial products, reverse engineer functionally similar materials, or to provide a service to third parties without written approval of BioLegend. By use of these products you accept the terms and conditions of all applicable Limited Use Label Licenses. Unless otherwise indicated, these products are for research use only and are not intended for human or animal diagnostic, therapeutic or commercial use.