

Product Data Sheet

Purified anti-Caspase-2L

Catalog # / Size: 634001 / 125 µl (5 Western blots)
634002 / 500 µl (20 Western blots)

Clone: Poly6340

Isotype: Rabbit Polyclonal

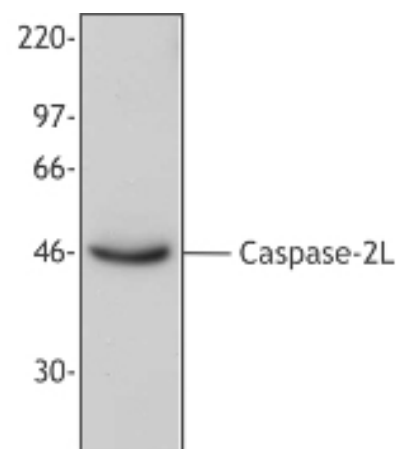
Immunogen: Peptide mapping to the carboxy terminal of human caspase-2L.

Reactivity: Human, Mouse, Rat

Preparation: The antibody was purified by affinity chromatography.

Formulation: This antibody is provided in phosphate-buffered solution, pH 7.2, containing 0.09% sodium azide and 0.2% gelatin.

Storage: The antibody solution should be stored undiluted at 4°C. DO NOT FREEZE.



Applications:

Applications: WB - *Quality tested*
IP - *Reported in the literature*

Recommended Usage: Each lot of this antibody is quality control tested by Western blotting. Western blotting suggested working dilution(s): Use 25µl per 5 ml antibody dilution buffer for each mini-gel. It is recommended that the reagent be titrated for optimal performance for each application.

Western blot analysis of extracts from HeLa cells, using anti-caspase-2L, Poly6340.

Description: Caspase 2 (Nedd-2/ICH-1) is a member of the peptidase family C14 that contains a CARD domain. This caspase has been reported to have two isoforms. The larger protein, Caspase-2L (ICH-1L) possesses proapoptotic activities, whereas Caspase-2S (ICH-1S) is able to inhibit apoptosis. When cells are induced to undergo apoptosis, endogenous Caspase 2 is probably activated early in the apoptotic process by cleaves into three fragments of 33 and 14 kD, and then these are further processed into 18 and 12 kD active subunits. The Poly6340 antibody has been shown to be useful for western blotting, immunoprecipitation, and immunohistochemistry of human, mouse, and rat caspase-2L p12 subunit and precursor (also designated Ich-1L).

Antigen References: 1. Wang L, et al. 1994. *Cell* 78:739

Related Products: **Product**
HRP Donkey anti-rabbit IgG (minimal x-reactivity)

Clone
Poly4064

Application
ELISA, IHC, WB



For research use only. Not for diagnostic use. Not for resale. BioLegend will not be held responsible for patent infringement or other violations that may occur with the use of our products.



*These products may be covered by one or more Limited Use Label Licenses (see the BioLegend Catalog or our website, www.biollegend.com/ordering#license). BioLegend products may not be transferred to third parties, resold, modified for resale, or used to manufacture commercial products, reverse engineer functionally similar materials, or to provide a service to third parties without written approval of BioLegend. By use of these products you accept the terms and conditions of all applicable Limited Use Label Licenses. Unless otherwise indicated, these products are for research use only and are not intended for human or animal diagnostic, therapeutic or commercial use.