

# Product Data Sheet

## Purified anti-Cdk4

**Catalog # / Size:** 633301 / 125 µl (5 Western blots)  
 633302 / 500 µl (20 Western blots)

**Clone:** Poly6333

**Isotype:** Rabbit Polyclonal

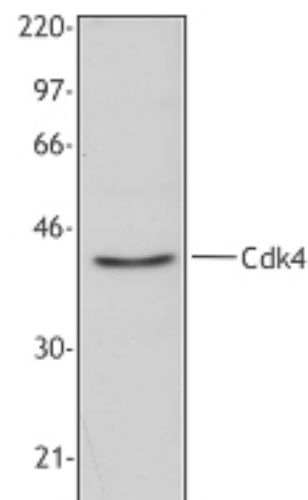
**Immunogen:** Peptide mapping to the carboxy terminus of mouse Cdk4

**Reactivity:** Human, Mouse, Rat

**Preparation:** The antibody was purified by affinity chromatography.

**Formulation:** This antibody is provided in phosphate-buffered solution, pH 7.2, containing 0.09% sodium azide and 0.2% gelatin.

**Storage:** The antibody solution should be stored undiluted at 4°C. DO NOT FREEZE.



Western blot analysis of extracts from HeLa cells, using anti-Cdk4, Poly6333.

## Applications:

**Applications:** WB - *Quality tested*

**Recommended Usage:** Each lot of this antibody is quality control tested by Western blotting. Western blotting suggested working dilution(s): Use 25 µl per 5 ml antibody dilution buffer for each mini-gel. It is recommended that the reagent be titrated for optimal performance for each application.

**Application Notes:** The Poly6333 antibody has been shown to be useful for Western blotting of human, mouse, and rat Cdk4 protein.

**Description:** Cdk4 (Cyclin dependent kinase 4) belongs to the Ser/Thr protein kinase superfamily, CDC2/CDKX subfamily, and predicted molecular weight 34 kD. The complexes formed by CDK4 and the D-type cyclins are involved in the control of cell proliferation during the G1 phase. D-type cyclins are induced by mitogens and activated Cdk4/cyclin D complexes are thought to phosphorylate the retinoblastoma susceptibility protein (Rb), thereby facilitating G<sub>1</sub> progression.

**Antigen References:** 1. Sherr CJ, et al. 1994. *Cell* 75:551

**Related Products:** **Product**  
 HRP Donkey anti-rabbit IgG (minimal x-reactivity)

**Clone**  
 Poly4064

**Application**  
 ELISA, IHC, WB



For research use only. Not for diagnostic use. Not for resale. BioLegend will not be held responsible for patent infringement or other violations that may occur with the use of our products.



\*These products may be covered by one or more Limited Use Label Licenses (see the BioLegend Catalog or our website, [www.biollegend.com/ordering#license](http://www.biollegend.com/ordering#license)). BioLegend products may not be transferred to third parties, resold, modified for resale, or used to manufacture commercial products, reverse engineer functionally similar materials, or to provide a service to third parties without written approval of BioLegend. By use of these products you accept the terms and conditions of all applicable Limited Use Label Licenses. Unless otherwise indicated, these products are for research use only and are not intended for human or animal diagnostic, therapeutic or commercial use.