

# Product Data Sheet

## Purified anti-Phospho-B-Raf (Thr598/Ser601)

**Catalog # / Size:** 632701 / 25 µl  
632702 / 100 µl

**Clone:** Poly6327

**Isotype:** Rabbit IgG

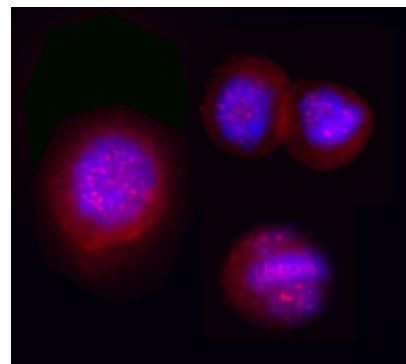
**Immunogen:** Modified peptide

**Reactivity:** Human

**Preparation:** The antibody was purified by antigen-affinity chromatography.

**Formulation:** This antibody is provided in phosphate-buffered solution, pH 7.2, containing 0.09% sodium azide and 50% glycerol.

**Storage:** Upon receipt, store frozen at -20° C.



Overnight nocodazole treated Hela cells stained with purified rabbit polyclonal antibody against Thr598/Ser601 phosphorylated B-Raf, followed by Rhodamine Red-X conjugated goat anti-rabbit IgG and DAPI.

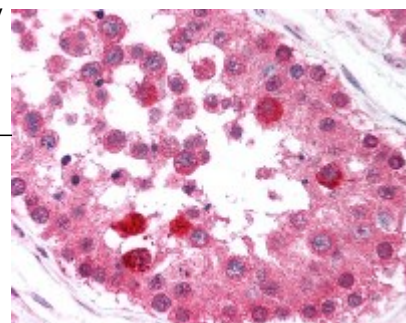
## Applications:

**Applications:** IF - Quality tested IHC - Validated

**Recommended Usage:** Each lot of this antibody is quality control tested by Immunofluorescence staining. For immunofluorescence microscopy, suggested working dilution(s): Use a dilution range of 1:100~1:400. For IHC, use a 1:100 dilution of antibody for staining. Antigen retrieval for IHC of formalin-fixed paraffin-embedded tissue using 0.01 M sodium citrate buffer is recommended. It is recommended that the reagent be titrated for optimal performance for each application.

**Description:** The Raf proteins are a family of serine/threonine-specific kinases that serve as a central intermediate in transmitting extracellular signals to the mitogen-activated protein kinase cascade, which controls cell growth, differentiation and survival. Three isoforms of Raf proteins have been found in mammalian cells: Raf-1, A-Raf and B-Raf. The B-raf involved in signal transduction from the membrane to the nucleus. It has been reported that T598 and S601 are the major phosphorylation sites of B-Raf in response to oncogenic Ras, and phosphorylation of these two residues is required for full activation of B-Raf. Mutations in the B-Raf gene have been reported in a number of human cancers, including malignant melanoma, thyroid cancer, and colorectal carcinoma. The poly6327 antibody recognizes human phosphorylated B-Raf (Thr598/Ser601) and has been shown to be useful for immunofluorescence staining.

**Antigen References:** 1. Avruch J, et al. 1994. *Trends Biochem Sci.* 19:279.  
2. Brose MS, et al. 2002. *Cancer Res.* 62:6997.  
3. Zhang B-H, et al. 2000. *EMBO* 19:5429.



Formalin-fixed paraffin-embedded human testis tissue was stained with Poly6327 and developed with an alkaline phosphatase chromogen substrate (red color). Tissue was counterstained with H&E (blue/pink). Magnification, 40X.



For research use only. Not for diagnostic use. Not for resale. BioLegend will not be held responsible for patent infringement or other violations that may occur with the use of our products.



\*These products may be covered by one or more Limited Use Label Licenses (see the BioLegend Catalog or our website, [www.biollegend.com/ordering#license](http://www.biollegend.com/ordering#license)). BioLegend products may not be transferred to third parties, resold, modified for resale, or used to manufacture commercial products, reverse engineer functionally similar materials, or to provide a service to third parties without written approval of BioLegend. By use of these products you accept the terms and conditions of all applicable Limited Use Label Licenses. Unless otherwise indicated, these products are for research use only and are not intended for human or animal diagnostic, therapeutic or commercial use.