

Product Data Sheet

Purified anti-Caspase-12

Catalog # / Size: 645401 / 25 µg

Clone: 14F7

Isotype: Rat IgG2a

Immunogen: P30 of bacterial fusion protein

Reactivity: Mouse

Preparation: The antibody was purified by affinity chromatography.

Formulation: This antibody is provided in phosphate-buffered solution, pH 7.2, containing 0.09% sodium azide.

Concentration: 0.5 mg/ml

Storage: Upon receipt, store at 4°C.

Applications:

Applications: WB - *Quality tested*
IP, IHC, ELISA - *Reported in the literature*

Recommended Usage: Each lot of this antibody is quality control tested by Western blotting. Western blotting, suggested working dilution(s): Use 1-2 µg antibody per ml antibody dilution buffer for each mini-gel. It is recommended that the reagent be titrated for optimal performance for each application.

Application References: 1. Nakagawa T, *et al.* 2000 *Nature* 403:98

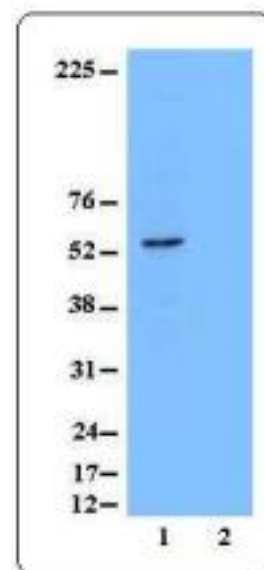
Description: Caspase-12 is located in the endoplasmic reticulum (ER). A non-caspase protease, calpain, upon activation by elevated intracellular calcium, may be responsible for the activation and cleavage of caspase-12. Caspase-12 is shown to participate in the development of apoptosis induced by ER-stress.

Antigen References: 1. Nakagawa T *et al.* 2000. *J Cell Biol* 150:887
2. Nakagawa T *et al.* 2000. *Nature* 403:98
3. Martinon F *et al.* 2007. *Cell Death and Differentiation* 14:10

Related Products: **Product**
Cell Staining Buffer
RBC Lysis Buffer (10X)

Clone

Application
FC, ICC, ICFC
FC, ICFC



PC12 (1) and Jurkat (2) cell extracts were resolved by electrophoresis, transferred to nitrocellulose and probed with monoclonal anti-caspase 12 (Clone 14F7) antibody. Proteins were visualized using goat anti-rat secondary antibody conjugated to HRP and a chemiluminescence system.



For research use only. Not for diagnostic use. Not for resale. BioLegend will not be held responsible for patent infringement or other violations that may occur with the use of our products.



*These products may be covered by one or more Limited Use Label Licenses (see the BioLegend Catalog or our website, www.biollegend.com/ordering#license). BioLegend products may not be transferred to third parties, resold, modified for resale, or used to manufacture commercial products, reverse engineer functionally similar materials, or to provide a service to third parties without written approval of BioLegend. By use of these products you accept the terms and conditions of all applicable Limited Use Label Licenses. Unless otherwise indicated, these products are for research use only and are not intended for human or animal diagnostic, therapeutic or commercial use.