

Product Data Sheet

FITC anti-CD247 (TCR ζ , CD3 ζ)

Catalog # / Size: 644103 / 25 μ g
 644104 / 100 μ g

Clone: 6B10.2

Isotype: Mouse IgG1 κ

Immunogen: Human TCR ζ chain aa38-54

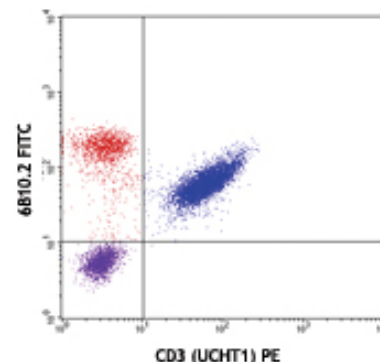
Reactivity: Human

Preparation: The antibody was purified by affinity chromatography, and conjugated with FITC under optimal conditions. The solution is free of unconjugated FITC.

Formulation: Phosphate-buffered solution, pH 7.2, containing 0.09% sodium azide.

Concentration: 0.5 mg/ml

Storage: The antibody solution should be stored undiluted at 4°C and protected from prolonged exposure to light. **Do not freeze.**



Human peripheral blood lymphocytes
 surface stained with CD3 (UCHT1)
 PE then intracellular stained with
 6B10.2 FITC

Applications:

Applications: ICFC - Quality tested

Recommended Usage: Each lot of this antibody is quality control tested by intracellular immunofluorescent staining with flow cytometric analysis. For immunofluorescent staining, the suggested use of this reagent is $\leq 0.5 \mu$ g per 10^6 cells in 100 μ l volume. It is recommended that the reagent be titrated for optimal performance for each application.

Application References:

1. Zhang Z, *et al.* 2007. *Blood* 109:4328 (Block)
2. Gorman CL, *et al.* 2008. *J. Immunol.* 180:1060
3. Jenson WA, *et al.* 1997. *Eur J. Immunol.* 27:707

This product is for in vitro research use only. It is not to be used for commercial purposes. Use of this product to produce products for sale or for diagnostic therapeutic or drug discovery purposes is prohibited. In order to obtain a license to use this product for commercial purposes contact The Regents of the University of California.

Description: The invariant TCR ζ chain is a member of the CD3 complex associated with the clonotypic α/β TCR heterodimer. The disulfide-linked TCR ζ homodimers transmit signals following TCR ligation. Loss of TCR ζ expression has been reported in a diverse range of disease states, including autoimmune diseases, many neoplastic conditions and chronic infections, such as tuberculosis and leprosy.

Antigen References: 1. Weissman A, *et al.* 1988. *P. Natl. Acad. Sci. USA* 85:9709

Related Products:

Product
 FITC Mouse IgG1, κ Isotype Ctrl (FC)
 Cell Staining Buffer
 RBC Lysis Buffer (10X)

Clone
 MOPC-21

Application
 FC
 FC, ICC, ICFC
 FC, ICFC



For research use only. Not for diagnostic use. Not for resale. BioLegend will not be held responsible for patent infringement or other violations that may occur with the use of our products.



*These products may be covered by one or more Limited Use Label Licenses (see the BioLegend Catalog or our website, www.biollegend.com/ordering#license). BioLegend products may not be transferred to third parties, resold, modified for resale, or used to manufacture commercial products, reverse engineer functionally similar materials, or to provide a service to third parties without written approval of BioLegend. By use of these products you accept the terms and conditions of all applicable Limited Use Label Licenses. Unless otherwise indicated, these products are for research use only and are not intended for human or animal diagnostic, therapeutic or commercial use.