

# Product Data Sheet

## Purified anti-Gli-1

**Catalog # / Size:** 642401 / 50 µl  
642402 / 200 µl

**Clone:** Poly6424

**Isotype:** Rabbit polyclonal

**Immunogen:** Synthetic peptide

**Reactivity:** Human

**Preparation:** The antibody was purified by affinity chromatography.

**Formulation:** This antibody is provided in phosphate-buffered solution, pH 7.2, containing 0.09% sodium azide and 50% glycerol.

**Storage:** Upon receipt, store frozen at -20° C.

## Applications:

**Applications:** WB - *Quality tested*

**Recommended Usage:** Each lot of this antibody is quality control tested by Western blotting. Western blotting, suggested working dilution(s): Use 10 µl per 5 ml antibody dilution buffer for each mini-gel. It is recommended that the reagent be titrated for optimal performance for each application.

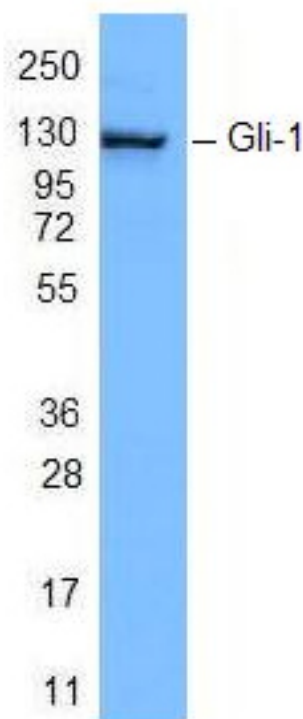
**Description:** This gene encodes a protein which is a member of the Kruppel family of zinc finger proteins. The function of this gene has not been determined; however, it may play a role in normal development gene transcription. The Gli transcription factors constitute the final effectors of the Hedgehog signalling pathway, which is critical to vertebrate development. Mouse mutation studies indicate possible involvement in human foregut malformation. In addition, both the Ras and Transforming Growth Factor Beta pathways also stimulate and/or induce Gli1 and Gli2 activity independently of Hedgehog ligands.

**Antigen References:** 1. Riddle, *et al. Cell* 1993; 75:1417  
2. Fernández-Zapico, *et al. Pancreatology*. 2008;8(3):227

**Related Products:** **Product**  
HRP Donkey anti-rabbit IgG (minimal  
x-reactivity)

**Clone**  
Poly4064

**Application**  
ELISA, IHC,  
WB



HepG2 cell lysate was resolved by electrophoresis, transferred to nitrocellulose and probed with purified rabbit polyclonal anti-Gli-1 antibody (poly6424). Proteins were visualized by HRP-conjugated anti-rabbit secondary antibody and a chemiluminescence system.



For research use only. Not for diagnostic use. Not for resale. BioLegend will not be held responsible for patent infringement or other violations that may occur with the use of our products.



\*These products may be covered by one or more Limited Use Label Licenses (see the BioLegend Catalog or our website, [www.biollegend.com/ordering#license](http://www.biollegend.com/ordering#license)). BioLegend products may not be transferred to third parties, resold, modified for resale, or used to manufacture commercial products, reverse engineer functionally similar materials, or to provide a service to third parties without written approval of BioLegend. By use of these products you accept the terms and conditions of all applicable Limited Use Label Licenses. Unless otherwise indicated, these products are for research use only and are not intended for human or animal diagnostic, therapeutic or commercial use.