

Product Data Sheet

Purified anti-GST

Catalog # / Size: 640801 / 25 µg
640802 / 100 µg

Clone: P1A12

Isotype: Mouse IgG2b, κ

Immunogen: Recombinant full length GST

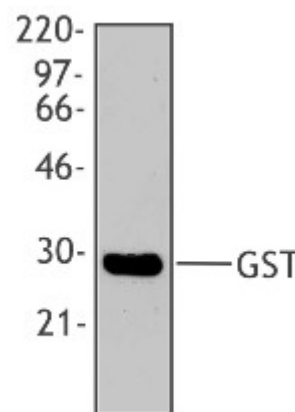
Reactivity: Human

Preparation: The antibody was purified by affinity chromatography.

Formulation: This antibody is provided in phosphate-buffered solution, pH 7.2, containing 0.09% sodium azide. Final antibody concentration is 0.5 mg/ml.

Concentration: 0.5 mg/ml

Storage: Upon receipt, store at 4°C.



Western blot analysis of recombinant GST protein from E. coli, using anti-GST, clone P1A12.

Applications:

Applications: WB

Recommended Usage: Each lot of this antibody is quality control tested by Western blotting. Western blotting, suggested working dilution(s): Use 5 µg antibody per 5 ml antibody dilution buffer for each mini-gel. It is recommended that the reagent be titrated for optimal performance for each application.

Description: GST catalyzes the conjugation of reduced glutathione to a wide number of exogenous and endogenous hydrophobic electrophiles, resulting in the detoxification of these compounds. Human GST molecules are classified into four families: alpha, mu, pi, and theta. GST is commonly used as a tag to create fusion proteins in order to facilitate purification and detection of these proteins of interest.

Antigen References: 1. Dejong JL, *et al.* 1988. *Nucleic Acids Res.* 16:8541.
2. Alin P, *et al.* 1985. *FEBS Lett.* 182:319

Related Products:

Product
Biotin Goat anti-mouse IgG (minimal x-reactivity)
HRP Goat anti-mouse IgG (minimal x-reactivity)

Clone
Poly4053
Poly4053

Application
FC, ELISA, IHC, IF, WB
ELISA, IHC, WB



For research use only. Not for diagnostic use. Not for resale. BioLegend will not be held responsible for patent infringement or other violations that may occur with the use of our products.



*These products may be covered by one or more Limited Use Label Licenses (see the BioLegend Catalog or our website, www.biollegend.com/ordering#license). BioLegend products may not be transferred to third parties, resold, modified for resale, or used to manufacture commercial products, reverse engineer functionally similar materials, or to provide a service to third parties without written approval of BioLegend. By use of these products you accept the terms and conditions of all applicable Limited Use Label Licenses. Unless otherwise indicated, these products are for research use only and are not intended for human or animal diagnostic, therapeutic or commercial use.