

Product Data Sheet

Purified anti-Argonaute-1 (eIF2C1)

Catalog # / Size: 638501 / 25 µl
638502 / 100 µl

Clone: Poly6385

Isotype: Rabbit Polyclonal

Immunogen: Recombinant human Argonaute-1 (aa 1-120)

Reactivity: Human

Preparation: The antibody was purified by antigen-affinity chromatography.

Formulation: This antibody is provided in phosphate-buffered solution, pH 7.2, containing 0.09% sodium azide and 50% glycerol.

Concentration: 0.5 mg/ml

Storage: Upon receipt, store frozen at -20° C.

Applications:

Applications: WB - *Quality tested*

Recommended Usage: Each lot of this antibody is quality control tested by Western blotting. Western blotting, suggested working dilution(s): Use 10 µl per 5 ml antibody dilution buffer for each mini-gel. It is recommended that the reagent be titrated for optimal performance for each application.

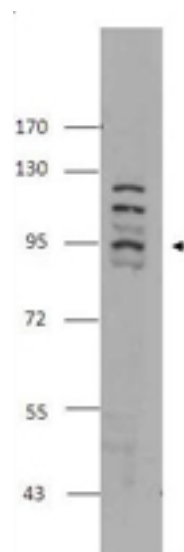
Description: Eukaryotic translation initiation factor 2C1 (eIF2C1) was originally identified as an essential component involved in the initiation of protein translation. It interacts with methionyl-tRNA and GTP, and promotes the formation of 40S ribosome-mRNA complex. It is homologous to the Drosophila protein, Argonaute-1, which is required for siRNA-mediated gene silencing. Poly6385 antibody is recommended for western blot analysis.

Antigen References: 1. Koesters P *et al.* 1999. *Genomics*. 61:210.
2. Doi N *et al.* 2003. *Current Biology*. 13:41.

Related Products: **Product**
HRP Donkey anti-rabbit IgG (minimal x-reactivity)

Clone
Poly4064

Application
ELISA, IHC, WB



Whole cell extracts of HeLa cells were resolved by electrophoresis, transferred to nitrocellulose, and probed with Purified anti-Argonaute-1 (eIF2C1) Antibody (clone Poly6385). Proteins were visualized using a donkey anti-rabbit-IgG secondary conjugated to HRP and chemiluminescence detection.



For research use only. Not for diagnostic use. Not for resale. BioLegend will not be held responsible for patent infringement or other violations that may occur with the use of our products.



*These products may be covered by one or more Limited Use Label Licenses (see the BioLegend Catalog or our website, www.biollegend.com/ordering#license). BioLegend products may not be transferred to third parties, resold, modified for resale, or used to manufacture commercial products, reverse engineer functionally similar materials, or to provide a service to third parties without written approval of BioLegend. By use of these products you accept the terms and conditions of all applicable Limited Use Label Licenses. Unless otherwise indicated, these products are for research use only and are not intended for human or animal diagnostic, therapeutic or commercial use.