

# Product Data Sheet

## Purified anti-14-3-3 ε

**Catalog # / Size:** 637901 / 25 µl

**Clone:** Poly6379

**Isotype:** Rabbit Polyclonal

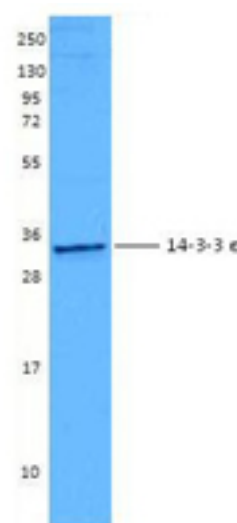
**Immunogen:** Full length human 14-3-3 epsilon recombinant protein

**Reactivity:** Human, **Cross-Reactivity:** Mouse (weak)

**Preparation:** The antibody was purified by antigen-affinity chromatography.

**Formulation:** This antibody is provided in phosphate-buffered solution, pH 7.2, containing 0.09% sodium azide and 50% glycerol.

**Storage:** Upon receipt, store frozen at -20°C.



## Applications:

**Applications:** WB - *Quality tested*

**Recommended Usage:** Each lot of this antibody is quality control tested by Western blotting. Western blotting, suggested working dilution(s): Use 10 µl per 5 ml antibody dilution buffer for each mini-gel. It is recommended that the reagent be titrated for optimal performance for each application.

**Application Notes:** The Poly6379 antibody has been shown to be useful for western blotting of human 14-3-3 epsilon protein.

**Description:** 14-3-3ε is a 29 kD protein that belongs to the family of 14-3-3 proteins. This family of proteins mediates signal transduction and cell cycle progression by binding to phosphoserine and phosphothreonine motifs on a large number of target molecules. 14-3-3 proteins activate tyrosine and tryptophan hydroxylases as well as protein kinase C. There are eight known isoforms of 14-3-3: alpha, beta, gamma, delta, epsilon, zeta, eta, and theta.

**Antigen References:**

1. Jin DY, *et al.* 1996. *Nature* 382:308.
2. Conklin DS, *et al.* 1995. *Proc. Natl. Acad. Sci. USA* 92:7892.
3. Zannis-Hadjopoulos M, *et al.* 2008. *Trends Biochem. Sci.* 33:44.

*Hela cell extracts were resolved by electrophoresis, transferred to nitrocellulose, and probed with anti-14-3-3 ε antibody (clone Poly6379). Proteins were visualized using a donkey anti-rabbit-IgG secondary conjugated to HRP and chemiluminescence detection.*



For research use only. Not for diagnostic use. Not for resale. BioLegend will not be held responsible for patent infringement or other violations that may occur with the use of our products.



\*These products may be covered by one or more Limited Use Label Licenses (see the BioLegend Catalog or our website, [www.biollegend.com/ordering#license](http://www.biollegend.com/ordering#license)). BioLegend products may not be transferred to third parties, resold, modified for resale, or used to manufacture commercial products, reverse engineer functionally similar materials, or to provide a service to third parties without written approval of BioLegend. By use of these products you accept the terms and conditions of all applicable Limited Use Label Licenses. Unless otherwise indicated, these products are for research use only and are not intended for human or animal diagnostic, therapeutic or commercial use.