

## Alexa Fluor® 488 anti-Hsp70

**Catalog # / Size:** 648003 / 25 tests  
648004 / 100 tests

**Clone:** W27

**Isotype:** Mouse IgG2a, κ

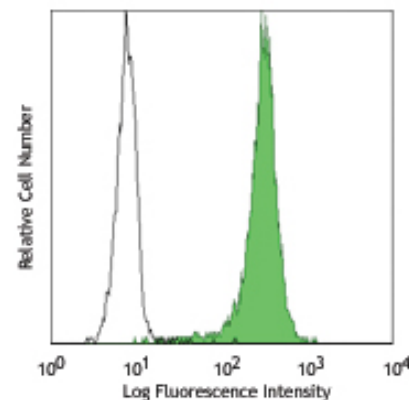
**Immunogen:** Recombinant Hsp70 protein

**Reactivity:** Human, **Cross-Reactivity:** Mouse

**Preparation:** The antibody was purified by affinity chromatography, and conjugated with Alexa Fluor® 488 under optimal conditions. The solution is free of unconjugated Alexa Fluor® 488.

**Formulation:** Phosphate-buffered solution, pH 7.2, containing 0.09% sodium azide and 0.2% (w/v) BSA (origin USA).

**Storage:** The antibody solution should be stored undiluted at 4°C and protected from prolonged exposure to light. **Do not freeze.**



Human cervical cancer cell line, HeLa, intracellularly stained with W27 Alexa Fluor® 488

## Applications:

**Applications:** ICFC - *Quality tested*

**Recommended Usage:** Each lot of this antibody is quality control tested by intracellular immunofluorescent staining with flow cytometric analysis. For immunofluorescent staining, the suggested use of this reagent is 5 µl per million cells or 5 µl per 100 µl of whole blood. It is recommended that the reagent be titrated for optimal performance for each application.

\* Alexa Fluor® 488 has a maximum emission of 519 nm when it is excited at 488 nm.

\*\* Alexa Fluor® 488 is a registered trademark of Molecular Probes, Inc. Alexa Fluor® 488 dye antibody conjugates are sold under license from Molecular Probes, Inc. for research use only, except for use in combination with microarrays and high content screening, and are covered by pending and issued patents.

**Description:** Hsp70 is a member of the Hsp family of highly conserved proteins that play a role in a number of important functions. Their synthesis is increased upon environmental stress. They function by acting as molecular chaperones, facilitating protein refolding and preventing protein aggregation. It has been reported that extracellular Hsp70 also exhibits immunomodulatory effects on innate and acquired immunity.

**Antigen References:**

1. Sharma D, *et al.* 2009. *Protein Peptide Lett.* 16:571.
2. Johnson JD, *et al.* 2006. *J. Leuk. Biol.* 79:425.
3. Bukau B, *et al.* 1998. *Cell* 92:351.

**Related Products:**

**Product**  
 Alexa Fluor® 488 Mouse IgG2a, κ Isotype Ctrl (ICFC)  
 Cell Staining Buffer  
 RBC Lysis Buffer (10X)

**Clone**  
 MOPC-173

**Application**  
 ICFC  
 FC, ICC, ICFC  
 FC, ICFC



For research use only. Not for diagnostic use. Not for resale. BioLegend will not be held responsible for patent infringement or other violations that may occur with the use of our products.



\*These products may be covered by one or more Limited Use Label Licenses (see the BioLegend Catalog or our website, [www.biolegend.com/ordering#license](http://www.biolegend.com/ordering#license)). BioLegend products may not be transferred to third parties, resold, modified for resale, or used to manufacture commercial products, reverse engineer functionally similar materials, or to provide a service to third parties without written approval of BioLegend. By use of these products you accept the terms and conditions of all applicable Limited Use Label Licenses. Unless otherwise indicated, these products are for research use only and are not intended for human or animal diagnostic, therapeutic or commercial use.